

# Stormwater Report for Catchment: WEB1014PI in the Town of Westport



Reed Road

### 2018 Massachusetts Integrated Listed Water

Discharge to tributary of East Branch Westport River

MA95-40      Category 4A River

Pollutants: Enterococcus, Fecal Coliform

Pipe:

SNEP Project:  Yes

Urbanized:  Yes

Sewered:  No

Inventory Date

No Flow Observations



### Rating by Weather (0-5):

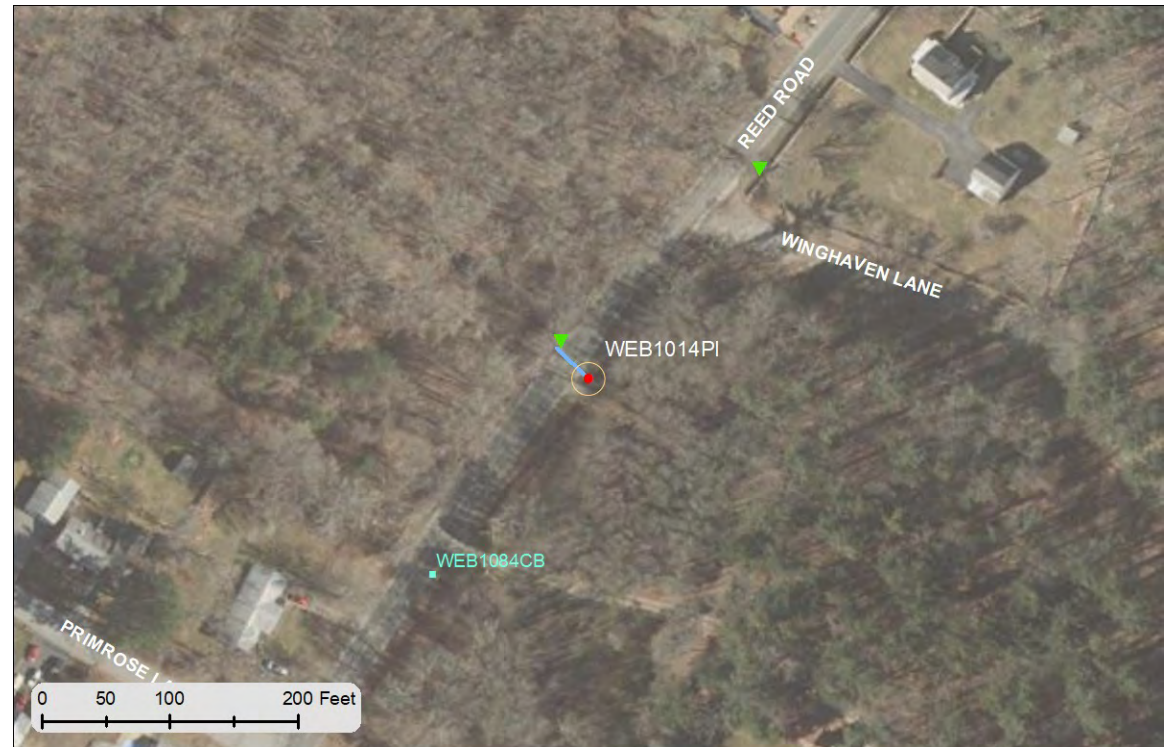
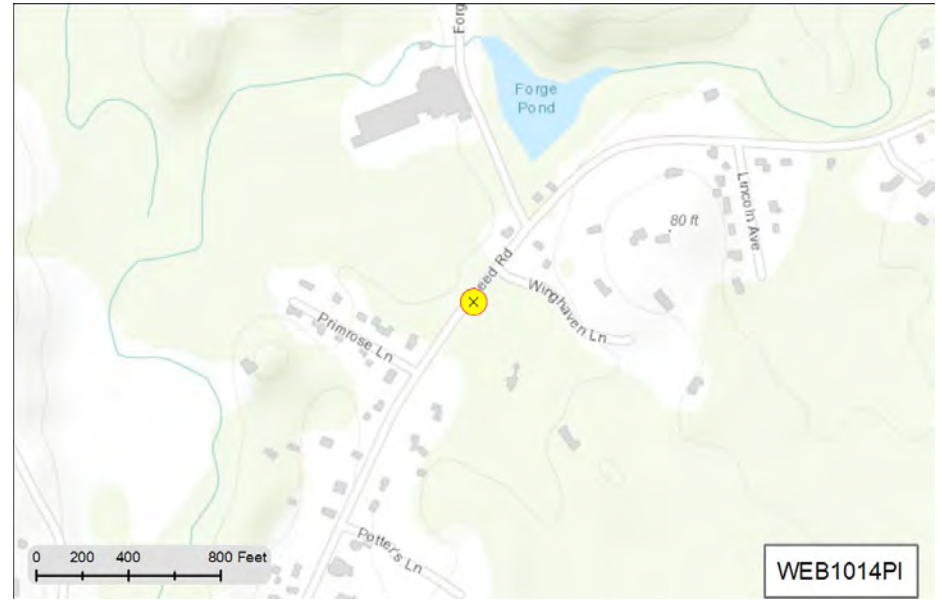
Wet :

Dry :

Recommendation:

MS4 Ranking:

Status:



Status and Recommendation based on the opinion of the BBNEP.



# Stormwater Report for Catchment: WEB1018PI in the Town of Westport



Primrose Lane

### 2018 Massachusetts Integrated Listed Water

Discharge to tributary of East Branch Westport River

MA95-40      Category 4A River

Pollutants: Enterococcus, Fecal Coliform

Pipe:

SNEP Project:

Urbanized:

Sewered:

Inventory Date

No Flow Observations



### Rating by Weather (0-5):

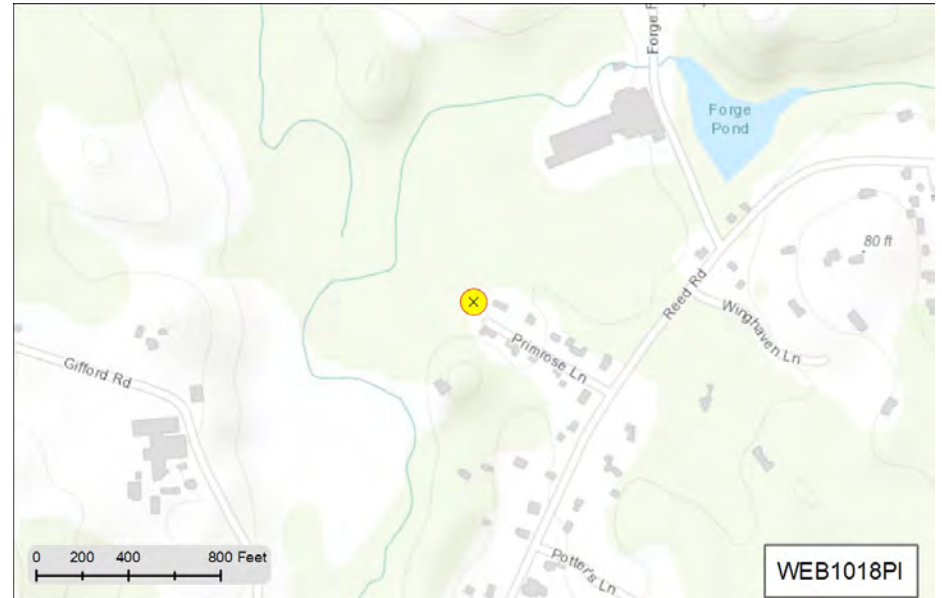
Wet :

Dry :

Recommendation:

MS4 Ranking:

Status:



Status and Recommendation based on the opinion of the BBNEP.





# Stormwater Report for Catchment: WEB1019PI in the Town of Westport



Reed Road

**2018 Massachusetts Integrated Listed Water**

Discharge directly to East Branch Westport River

MA95-40      Category 4A River

Pollutants: Enterococcus, Fecal Coliform

Pipe:

SNEP Project:  Yes

Urbanized:  Yes

Sewered:  No

Inventory Date

No Flow Observations

**Rating by Weather (0-5):**

Wet :

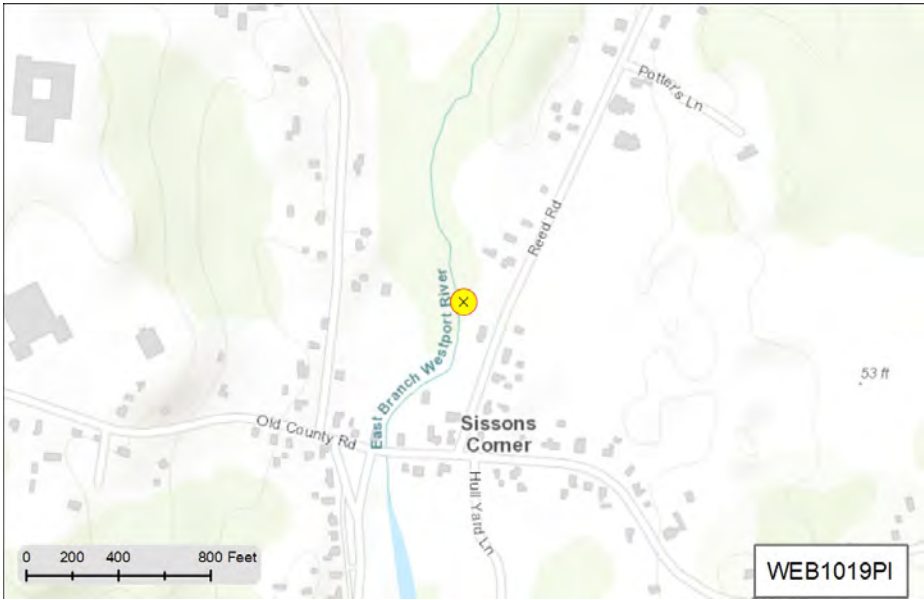
Dry :



Recommendation:

MS4 Ranking:

Status:



Status and Recommendation based on the opinion of the BBNEP.



# Stormwater Report for Catchment: WEB1026PI in the Town of Westport



Old County Road

### 2018 Massachusetts Integrated Listed Water

Discharge directly to East Branch Westport River

MA95-41      Category 5 Estuary

Pollutants: Estuarine Bioassessments, Nitrogen (Total),  
Nutrient/Eutrophication Biological Indicators, Fecal Coliform

Pipe:

SNEP Project:  Yes

Urbanized:  Yes

Sewered:  No

Inventory Date

No Flow Observations

#### Rating by Weather (0-5):

Wet :

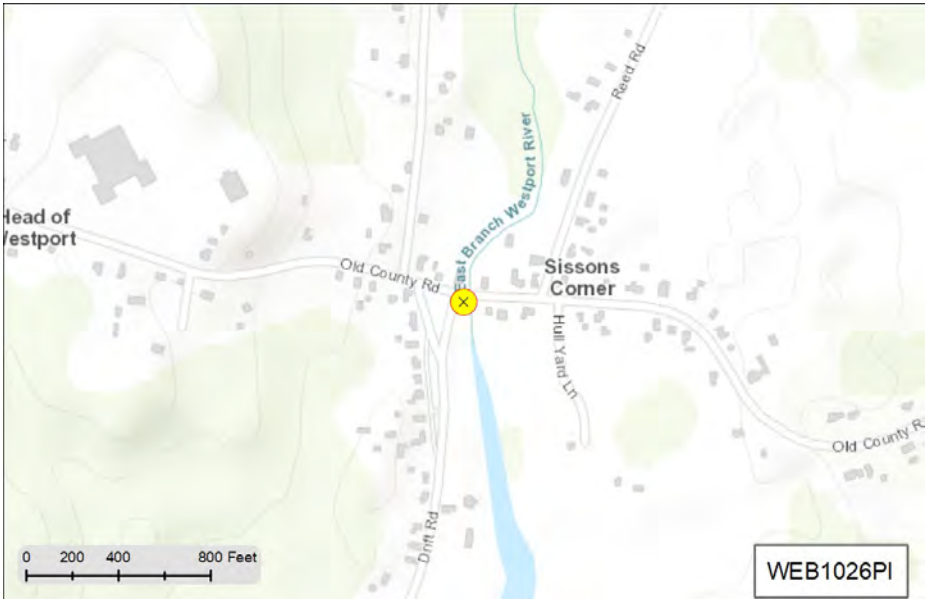
Dry :



Recommendation:

MS4 Ranking:

Status:



Status and Recommendation based on the opinion of the BBNEP.

**Field Results**

SampleID	SampleDate	FacilityID	SampleType	Last Rain	48hr Rain	Sensory	pH	Temp.	Salinity	Ammonia	Chlorine	Nitrate	Surfactants
1WP12JUL02-A	7/12/2021	WEB1026PI	stream	0 hrs	0.02 in	Color	6.91	23.1 C	0.09 ppt	0.25 ppm	10 ppb	3.52 ppm	3 ppm
1WE05AUG02-A	8/5/2021	WEB1026PI	pipe	0 hrs	2.6 in	none	8.15	20.8 C	0.08 ppt	0 ppm	36 ppb		

**Certified Laboratory Results**

SampleID	Entero.	Fecal C.	E. coli	Kjeldhal N	Ammonia N	Nitrate N	Nitrite N	Total N	Total P	TSS	DO	BOD
1WP12JUL02-A		< 1000										
1WE05AUG02-A		24000		2.1 mg/L		0.92 mg/L	BRL	NEP Calc 3.02 mg/L				



# Stormwater Report for Catchment: WEB1038PI in the Town of Westport



Fieldstone Drive

**2018 Massachusetts Integrated Listed Water**

Discharge to tributary of Bread and Cheese Brook

MA95-58    Catagory 4A River

Pollutants: Enterococcus, Fecal Coliform

Pipe:

SNEP Project:

Urbanized:

Sewered:

Inventory Date

No Flow Observations

**Rating by Weather (0-5):**

Wet :

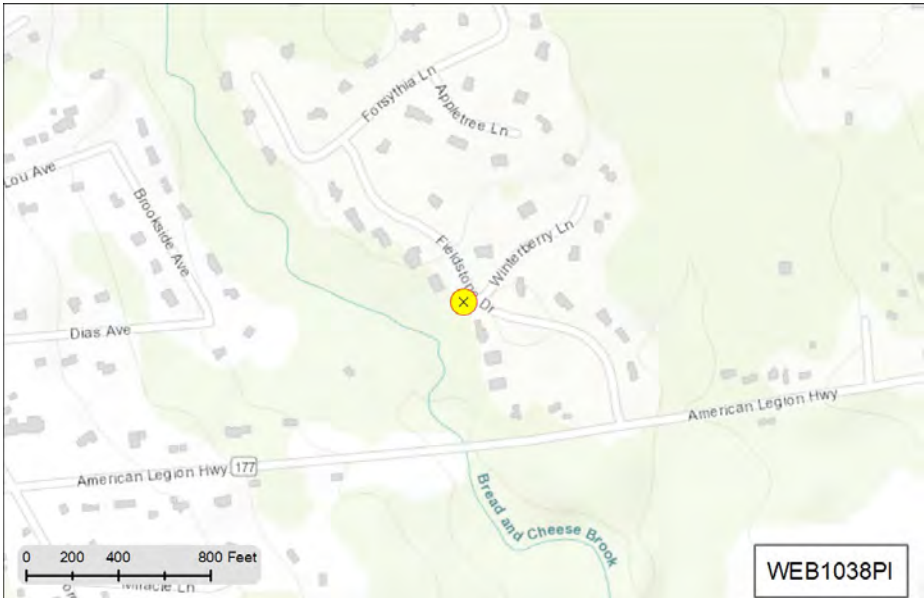
Dry :



Recommnedation:

MS4 Ranking:

Status:



Status and Recommendation based on the opinion of the BBNEP.



# Stormwater Report for Catchment: WEB1100PI in the Town of Westport



Old County Road

### 2018 Massachusetts Integrated Listed Water

Discharge directly to Kirby Brook

MA95-82      Category 5 River

Pollutants: Enterococcus

Pipe: Circular 15 inch Concrete

SNEP Project:  Yes

Urbanized:  Yes

Sewered:  No

Inventory Date

No Flow Observations



### Rating by Weather (0-5):

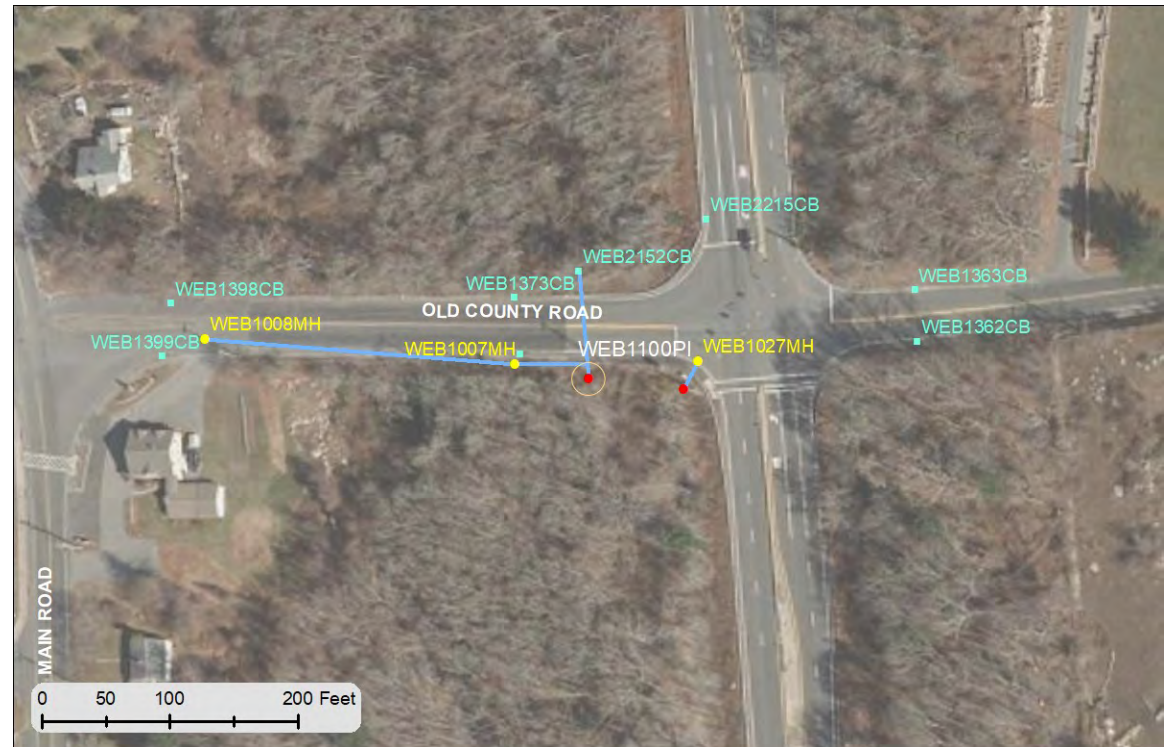
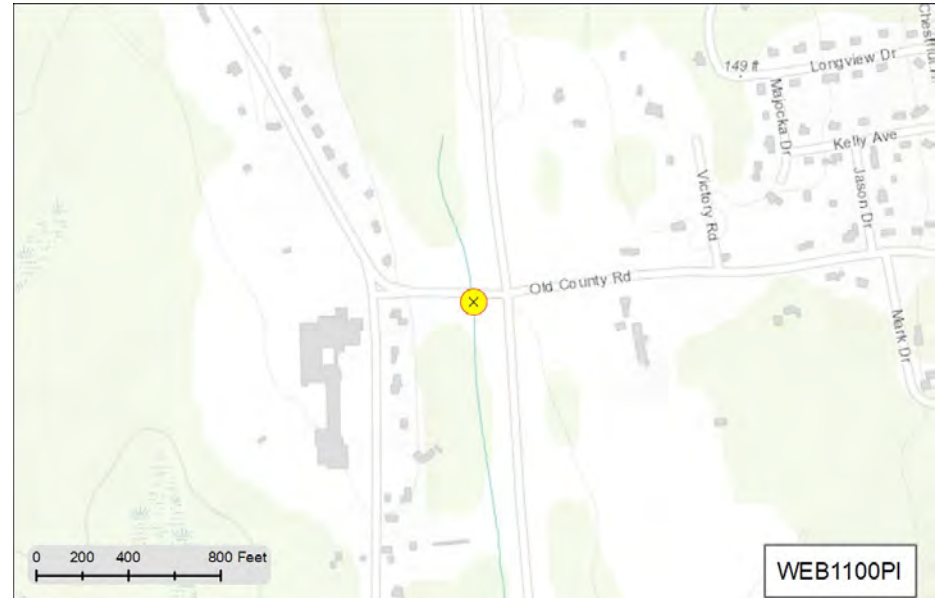
Wet :

Dry :

Recommendation:

MS4 Ranking:

Status:



Status and Recommendation based on the opinion of the BBNEP.





**Stormwater Report for Catchment: WEB1297PI  
in the Town of Westport**



off of Old County Road

**2018 Massachusetts Integrated Listed Water**  
 Discharge directly to East Branch Westport River  
 MA95-41    Category 5 Estuary  
 Pollutants: Estuarine Bioassessments, Nitrogen (Total),  
 Nutrient/Eutrophication Biological Indicators, Fecal Coliform

Pipe:

SNEP Project:  Yes

Urbanized:  Yes

Sewered:  No

Inventory Date

No Flow Observations

**Rating by Weather (0-5):**

Wet :

Dry :



Recommendation:

MS4 Ranking:

Status:



Status and Recommendation based on the opinion of the BBNEP.

**Field Results**

SampleID	SampleDate	FacilityID	SampleType	Last Rain	48hr Rain	Sensory	pH	Temp.	Salinity	Ammonia	Chlorine	Nitrate	Surfactants
1WE09JUL02-A	7/9/2021	WEB1297PI	stream	0 hrs	0.43 in	none	8.25	23 C	0.07 ppt	0.25 ppm	0 ppb	0.88 ppm	0.5 ppm
1WP12JUL03-A	7/12/2021	WEB1297PI	pipe	0 hrs	0.02 in	none	6.59	21.3 C	0.06 ppt	0.25 ppm	23 ppb	0 ppm	3 ppm
1WE05AUG01-A	8/5/2021	WEB1297PI	pipe	0 hrs	2.55 in	none	8.81	20.8 C	0.03 ppt	0.25 ppm	25 ppb	0.88 ppm	0 ppm

**Certified Laboratory Results**

SampleID	Entero.	Fecal C.	E. coli	Kjeldhal N	Ammonia N	Nitrate N	Nitrite N	Total N	Total P	TSS	DO	BOD
1WE09JUL02-A		2000		0.98 mg/L		0.25 mg/L	BRL	NEP Calc 1.23 mg/L				
1WP12JUL03-A		2000										
1WE05AUG01-A		3000		BRL		0.26 mg/L	BRL	NEP Calc 0.26 mg/L				

# Stormwater Report for Catchment: WEB1329PI in the Town of Westport



Bower Avenue

**2018 Massachusetts Integrated Listed Water**

Discharge to tributary of Bread and Cheese Brook

MA95-58      Catagory 4A River

Pollutants: Enterococcus, Fecal Coliform

Pipe:

SNEP Project:

Urbanized:

Sewered:

Inventory Date

No Flow Observations

**Rating by Weather (0-5):**

Wet :

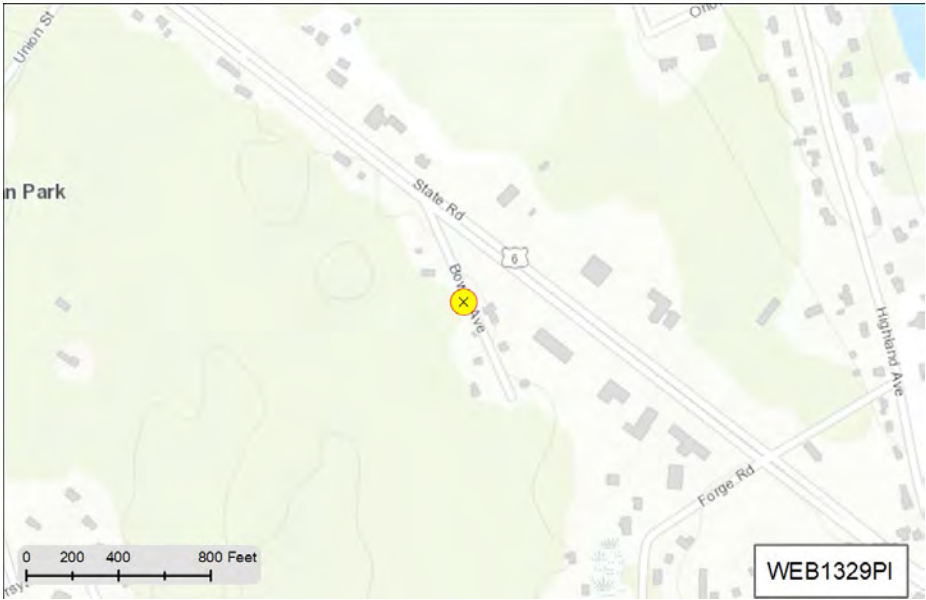
Dry :



Recommnedation:

MS4 Ranking:

Status:



Status and Recommendation based on the opinion of the BBNEP.

