

Stormwater Report for Catchment: ONB1002PI in the Town of Wareham



Great Neck Road

2018 Massachusetts Integrated Listed Water

Discharge to tributary of Onset Bay

MA95-02 Category 5 Estuary

Pollutants: Estuarine Bioassessments, Fecal Coliform

Pipe:

SNEP Project: No

Urbanized: Yes

Sewered:

Inventory Date

No Flow Observations

Rating by Weather (0-5):

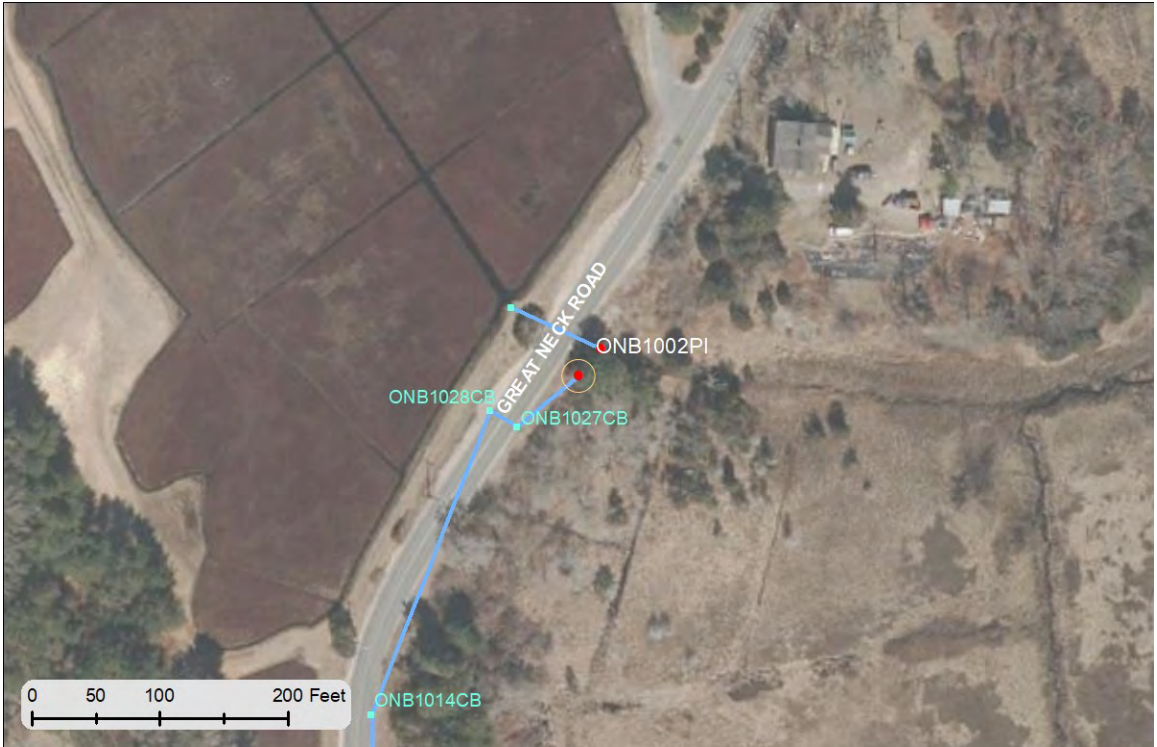
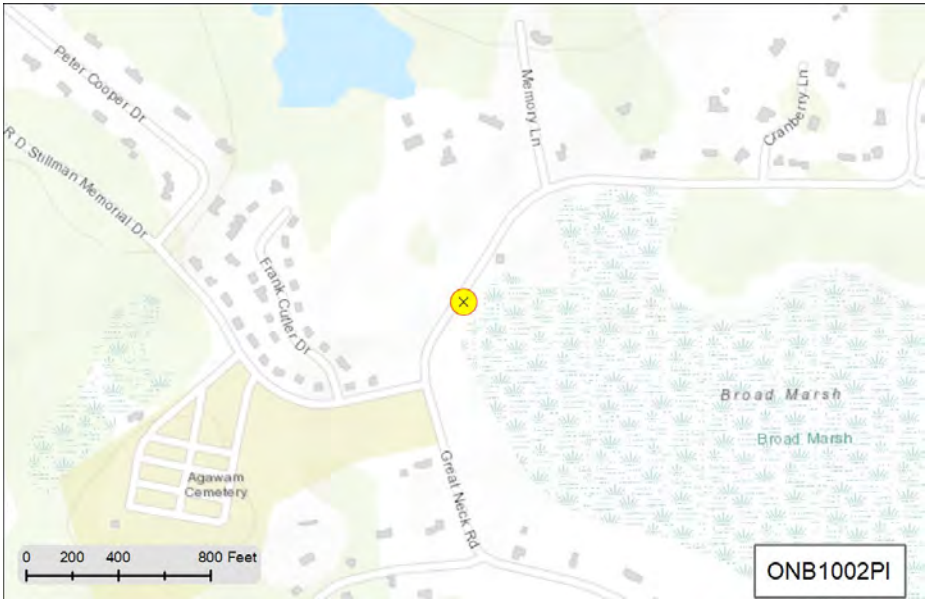
Wet :

Dry :

Recommendation:

MS4 Ranking:

Status:



Status and Recommendation based on the opinion of the BBNEP.

Stormwater Report for Catchment: ONB1004PI in the Town of Wareham



Agawam Beach Rd at Agawam Beach

2018 Massachusetts Integrated Listed Water

Discharge to tributary of Onset Bay

MA95-02 Category 5 Estuary

Pollutants: Estuarine Bioassessments, Fecal Coliform

Pipe:

SNEP Project: No

Urbanized: Yes

Sewered:

Inventory Date

No Flow Observations

Rating by Weather (0-5):

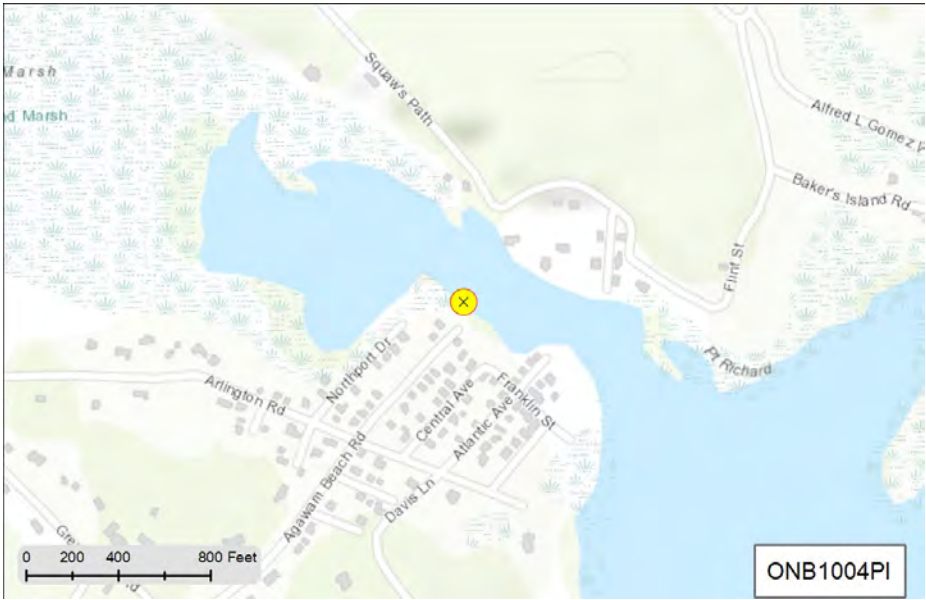
Wet :

Dry :

Recommendation:

MS4 Ranking:

Status:



Status and Recommendation based on the opinion of the BBNEP.

Stormwater Report for Catchment: ONB1006PI in the Town of Wareham



West Boulevard

2018 Massachusetts Integrated Listed Water

Discharge to tributary of Onset Bay

MA95-02 Category 5 Estuary

Pollutants: Estuarine Bioassessments, Fecal Coliform

Pipe:

SNEP Project:

Urbanized:

Sewered:

Inventory Date

No Flow Observations

Rating by Weather (0-5):

Wet :

Dry :

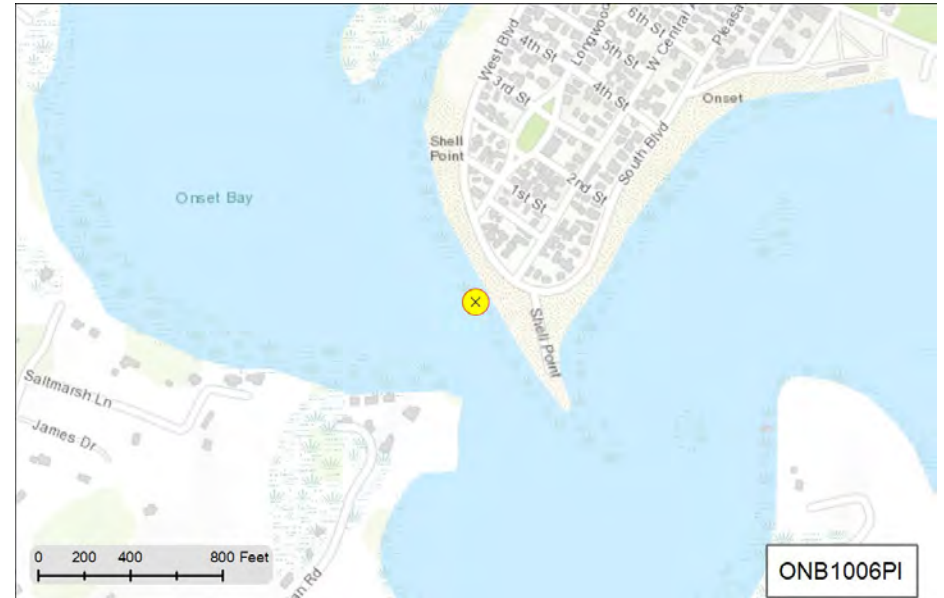


Recommendation:

DW rank: Bact (1), Total 1. WW: no samples, Recommend: Collect WW samples for evaluation. ONB Impair: Bact, N

MS4 Ranking:

Status:



Status and Recommendation based on the opinion of the BBNEP.

Stormwater Report for Catchment: ONB1007PI in the Town of Wareham



West Blvd

2018 Massachusetts Integrated Listed Water

Discharge to tributary of Onset Bay

MA95-02 Category 5 Estuary

Pollutants: Estuarine Bioassessments, Fecal Coliform

Pipe:

SNEP Project: No

Urbanized: Yes

Sewered:

Inventory Date

No Flow Observations

Rating by Weather (0-5):

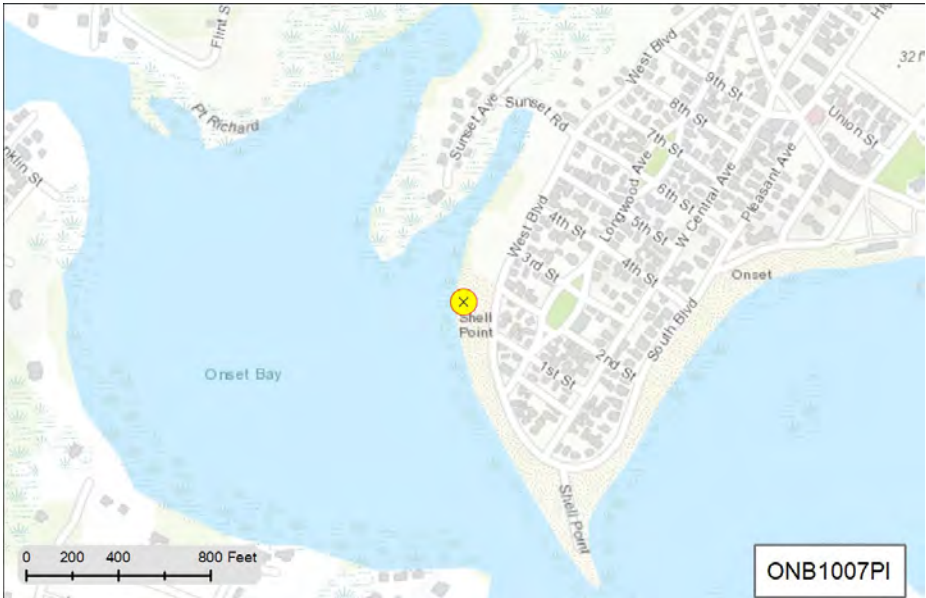
Wet :

Dry :

Recommendation:

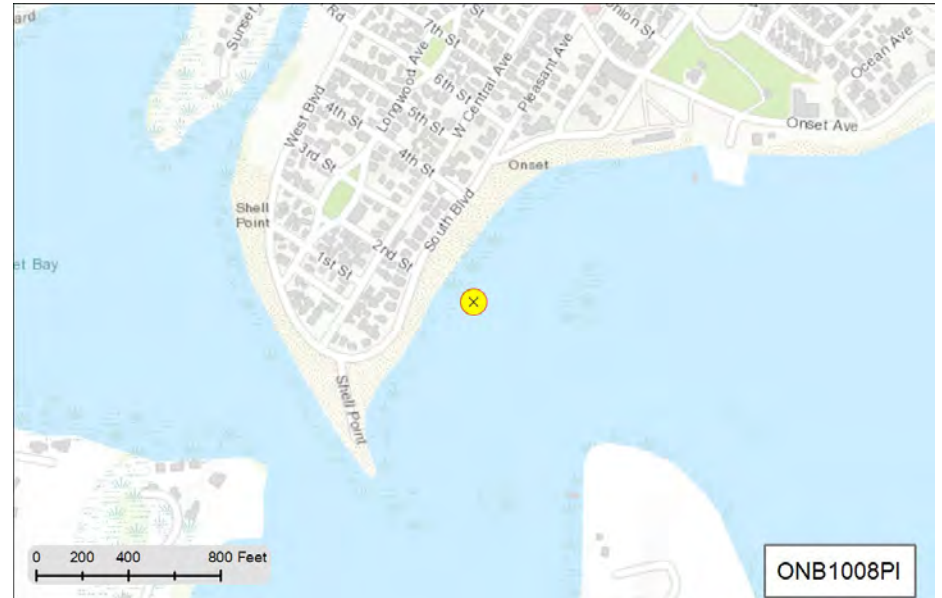
MS4 Ranking:

Status:



Status and Recommendation based on the opinion of the BBNEP.

Stormwater Report for Catchment: ONB1008PI in the Town of Wareham



ONB1008PI

South Boulevard

2018 Massachusetts Integrated Listed Water

Discharge directly to Onset Bay

MA95-02 Category 5 Estuary

Pollutants: Estuarine Bioassessments, Fecal Coliform

Pipe: Circular 12 inch Corrugated Metal

SNEP Project: Yes

Urbanized: Yes

Sewered: Yes

Inventory Date: 4/13/2016

4 No Flow Observations

Rating by Weather (0-5):

Wet:

Dry:



Recommendation:

ONB1059CB is a flow splitter for the infiltration structures (IS). The 3 MHs adjacent to the CB are access to the IS. Concern is with the high bact concentrations in the CB sump. Recommend: Need to determine if the IS are functioning correctly and being maintained. This system should be a HIGH PRIORITY for wet weather sampling. Details should be recorded as to the functionality of the overall system. ONB Impair: Bact, N



0 50 100 200 Feet

MS4 Ranking: High Priority Outfall

Status: Evaluation Not Complete

Status and Recommendation based on the opinion of the BBNEP.

Stormwater Report for Catchment: ONB1010PI in the Town of Wareham



South Boulevard

2018 Massachusetts Integrated Listed Water

Discharge directly to Onset Bay

MA95-02 Catagory 5 Estuary

Pollutants: Estuarine Bioassessments, Fecal Coliform

Pipe:

SNEP Project: Yes

Urbanized: Yes

Sewered: Yes

Inventory Date

No Flow Observations

Rating by Weather (0-5):

Wet :

Dry :

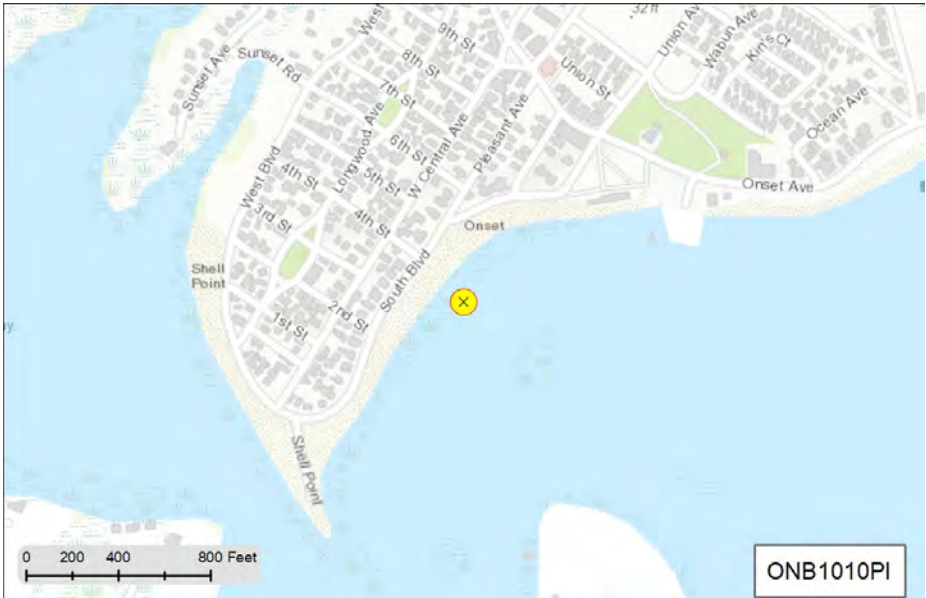


Recommndation:

ONB1068CB is a flow splitter for the infiltration structures (IS). The 4 MHs adjacent to the CB are access to the IS. Concern is with the slightly high bact concentrations in the CB sump. Recommend: Need to determine if the IS are functioning correctly and being maintained. This sytem should be a HIGH PRIORITY for wet weather sampling. Details should be recorded as to the functionality of the overall system. ONB Impair: Bact, N

MS4 Ranking:

Status:



Status and Recommendation based on the opinion of the BBNEP.

Stormwater Report for Catchment: ONB1012PI in the Town of Wareham



South Boulevard

2018 Massachusetts Integrated Listed Water

Discharge directly to Onset Bay

MA95-02 Category 5 Estuary

Pollutants: Estuarine Bioassessments, Fecal Coliform

Pipe:

SNEP Project: Yes

Urbanized: Yes

Sewered: Yes

Inventory Date

No Flow Observations

Rating by Weather (0-5):

Wet :

Dry :

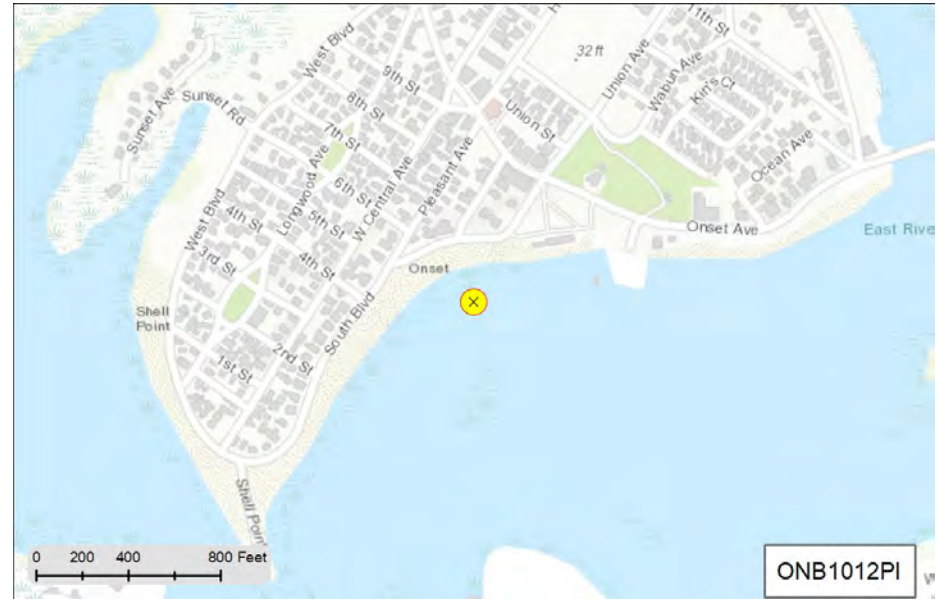


Recommendation:

ONB1076CB is a flow splitter for the infiltration structures (IS). The 4 MHs adjacent to the CB are access to the IS. Although the bact concentrations in the CB sump are not too high, these IS should be investigated similar to IS associated with ONB1008PI and ONB1010PI. Recommend: Need to determine if the IS are functioning correctly and being maintained. This system should be a HIGH PRIORITY for wet weather sampling. Details should be recorded as to the functionality of the overall system. ONB Impair: Bact, N

MS4 Ranking:

Status:



Status and Recommendation based on the opinion of the BBNEP.

Stormwater Report for Catchment: ONB1016PI in the Town of Wareham



Onset Avenue

2018 Massachusetts Integrated Listed Water

Discharge directly to Onset Bay

MA95-02 Category 5 Estuary

Pollutants: Estuarine Bioassessments, Fecal Coliform

Pipe:

SNEP Project: Yes

Urbanized: Yes

Sewered: Yes

Inventory Date

No Flow Observations

Rating by Weather (0-5):

Wet :

Dry :

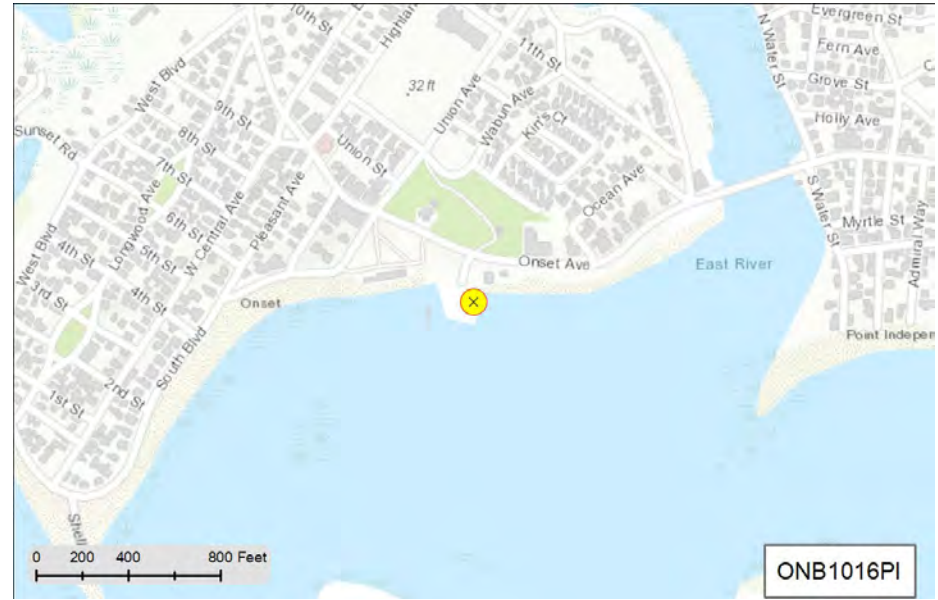


Recommendation:

The samples from ONB1015MH have all been brackish, the next upstream MH (ONB1016MH) has a sediment filter that affects sample collection. Recommend (DW): Continue to monitor the pipe. WW: Determine the flow characteristics of both the of the parking lot and Onset Ave. (at least two drainage systems). Monitor the next upstream structures. ONB Impair: Bact, N

MS4 Ranking:

Status:



Status and Recommendation based on the opinion of the BBNEP.

Stormwater Report for Catchment: ONB1024PI in the Town of Wareham



Onset Avenue

2018 Massachusetts Integrated Listed Water

Discharge to tributary of Onset Bay

MA95-02 Catagory 5 Estuary

Pollutants: Estuarine Bioassessments, Fecal Coliform

Pipe:

SNEP Project:

Urbanized:

Sewered:

Inventory Date

No Flow Observations

Rating by Weather (0-5):

Wet :

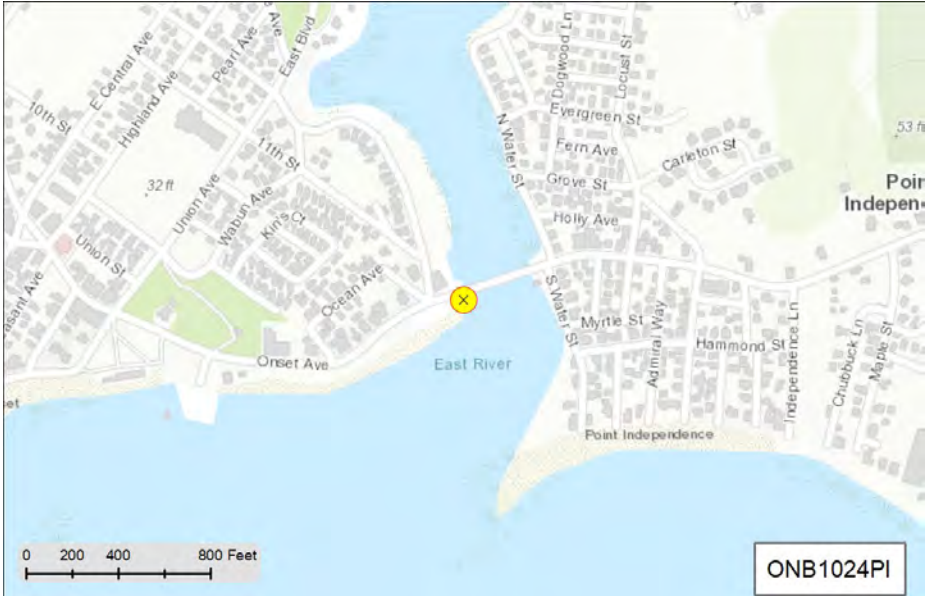
Dry :



Recommnedation:

MS4 Ranking:

Status:



Status and Recommendation based on the opinion of the BBNEP.

Stormwater Report for Catchment: ONB1025PI in the Town of Wareham



South Water Street

2018 Massachusetts Integrated Listed Water

Discharge to tributary of Onset Bay

MA95-02 Category 5 Estuary

Pollutants: Estuarine Bioassessments, Fecal Coliform

Pipe:

SNEP Project:

Urbanized:

Sewered:

Inventory Date

No Flow Observations

Rating by Weather (0-5):

Wet :

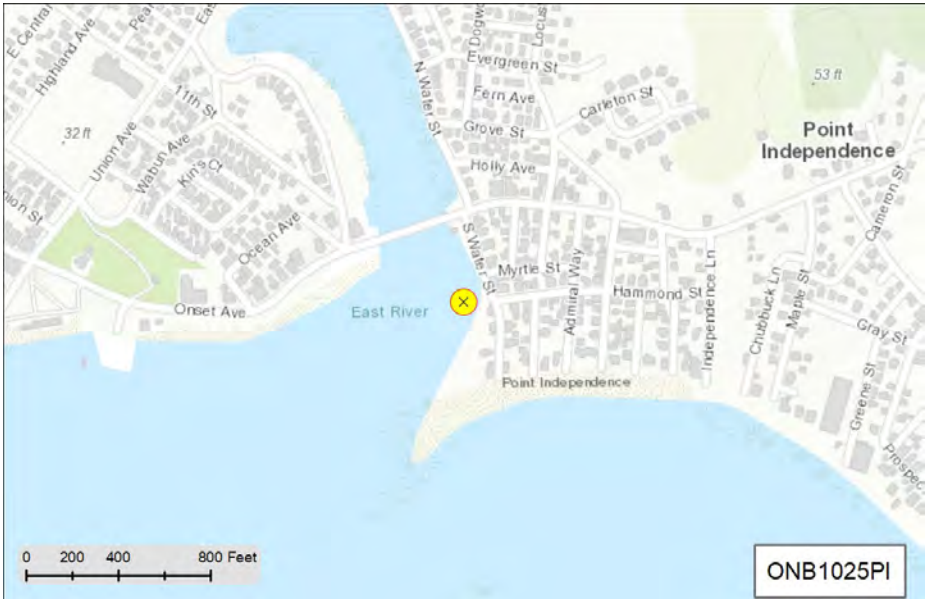
Dry :



Recommendation:

MS4 Ranking:

Status:



Status and Recommendation based on the opinion of the BBNEP.

Stormwater Report for Catchment: ONB1036PI in the Town of Wareham



Independence Lane

2018 Massachusetts Integrated Listed Water

Discharge directly to Onset Bay

MA95-02 Catagory 5 Estuary

Pollutants: Estuarine Bioassessments, Fecal Coliform

Pipe:

SNEP Project: Yes

Urbanized: Yes

Sewered: Yes

Inventory Date

No Flow Observations

Rating by Weather (0-5):

Wet :

Dry :

Recommnedation:

ONB1654CB (and probably ONB1289CB) are brackish. Recommend checking for other structures (MH,CB), monitor the next upstream structure for WW and DW. If none exist monitor drainage (WW only) from the surface of the parking lot adjacent ONB1654CB and ONB1289CB and note this is a parking lot surface sample on data sheet. ONB Impair: Bact, N

MS4 Ranking:

Status:



Status and Recommendation based on the opinion of the BBNEP.

Stormwater Report for Catchment: ONB1037PI in the Town of Wareham



Churbeck Lane

2018 Massachusetts Integrated Listed Water

Discharge directly to Onset Bay
 MA95-02 Category 5 Estuary
 Pollutants: Estuarine Bioassessments, Fecal Coliform

Pipe:

SNEP Project: Yes

Urbanized: Yes

Sewered: Yes

Inventory Date

No Flow Observations

Rating by Weather (0-5):

Wet :

Dry :

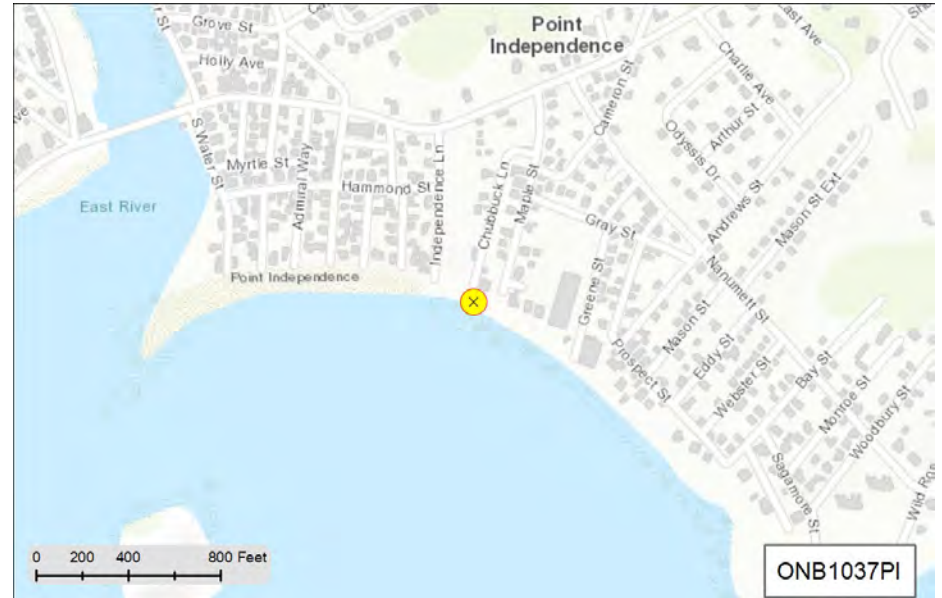


Recommendation:

DW: No flow, no issues. WW: No samples collected. Recommend: Collect WW samples for evaluation. ONB Impair: Bact, N

MS4 Ranking:

Status:



Status and Recommendation based on the opinion of the BBNEP.

Stormwater Report for Catchment: ONB1038PI in the Town of Wareham



Prospect Street

2018 Massachusetts Integrated Listed Water

Discharge directly to Onset Bay

MA95-02 Category 5 Estuary

Pollutants: Estuarine Bioassessments, Fecal Coliform

Pipe:

SNEP Project: Yes

Urbanized: Yes

Sewered: Yes

Inventory Date

No Flow Observations

Rating by Weather (0-5):

Wet :

Dry :

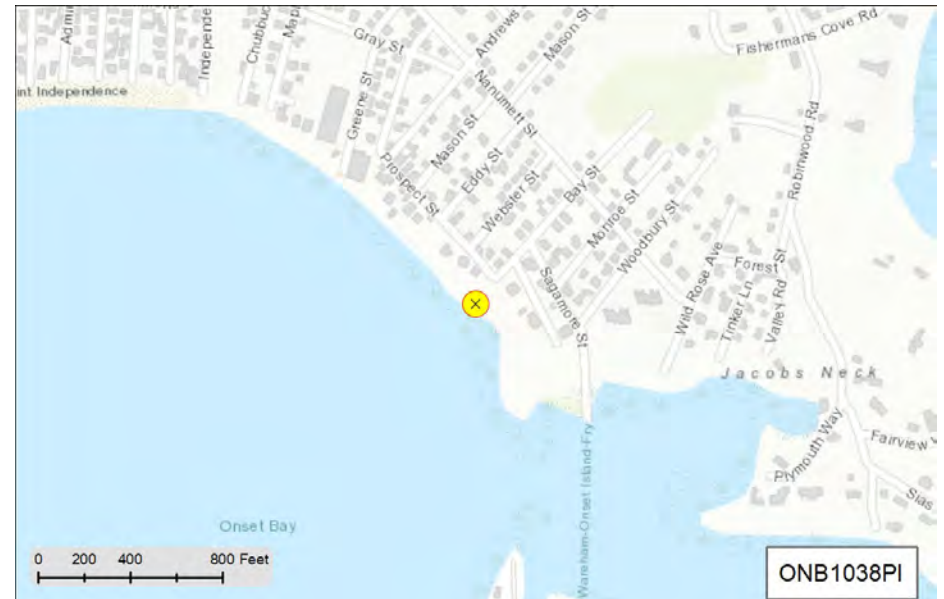


Recommendation:

DW: no flow, no issues. WW: No samples collected. Recommend: Collect WW samples for evaluation. ONB Impair: Bact, N

MS4 Ranking:

Status:



Status and Recommendation based on the opinion of the BBNEP.

Stormwater Report for Catchment: ONB1041PI in the Town of Wareham



North Water Street

2018 Massachusetts Integrated Listed Water

Discharge to tributary of Onset Bay

MA95-02 Category 5 Estuary

Pollutants: Estuarine Bioassessments, Fecal Coliform

Pipe:

SNEP Project:

Urbanized:

Sewered:

Inventory Date

No Flow Observations

Rating by Weather (0-5):

Wet :

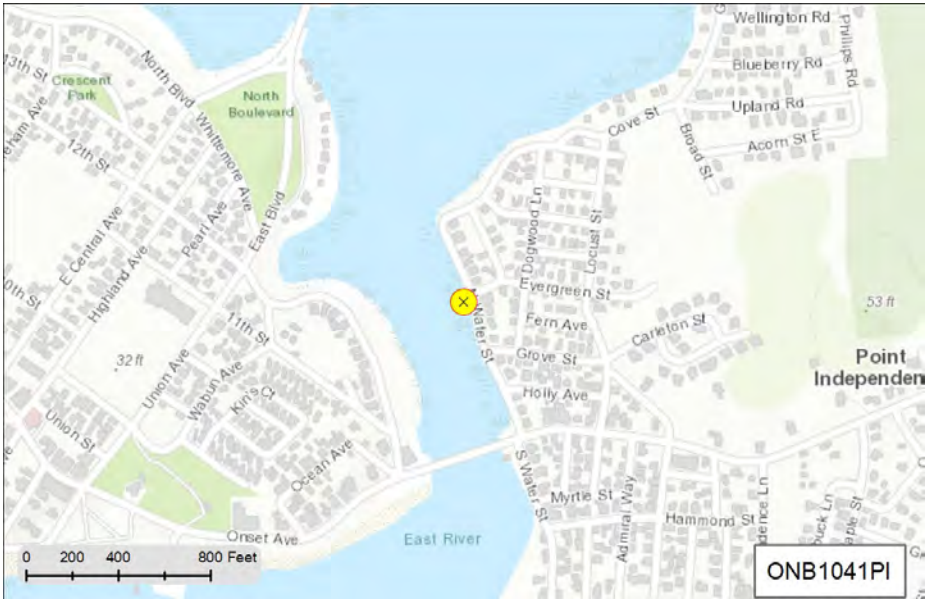
Dry :



Recommendation:

MS4 Ranking:

Status:



Status and Recommendation based on the opinion of the BBNEP.

Stormwater Report for Catchment: ONB1042PI in the Town of Wareham



Sagamore Street

2018 Massachusetts Integrated Listed Water

Discharge directly to Onset Bay

MA95-02 Category 5 Estuary

Pollutants: Estuarine Bioassessments, Fecal Coliform

Pipe:

SNEP Project: Yes

Urbanized: Yes

Sewered: Yes

Inventory Date

No Flow Observations

Rating by Weather (0-5):

Wet :

Dry :

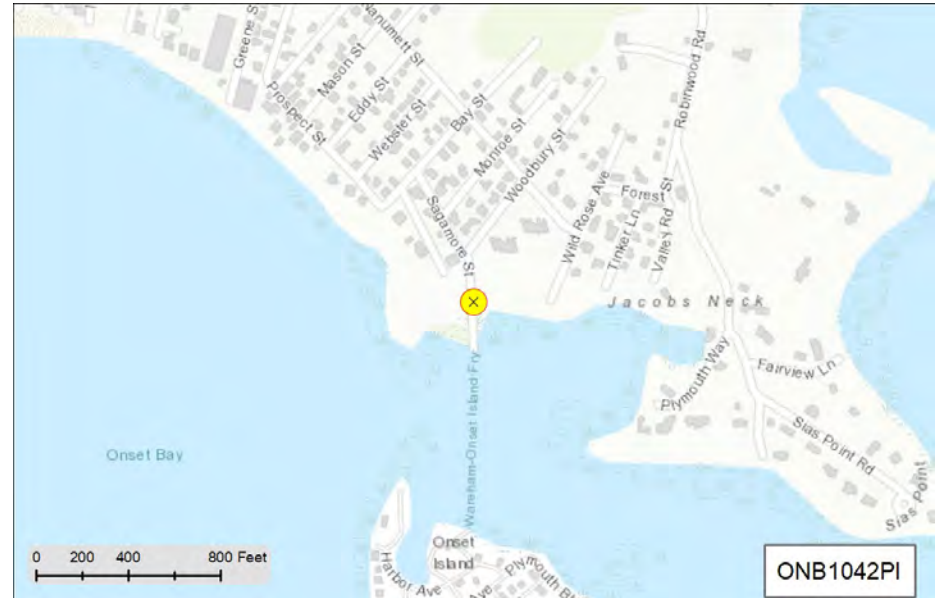


Recommendation:

For the most part the DW samples do not appear to be an issue, although Bact was found to be high in sump on 9/6/16. Recommend: DW continue to monitor, take sample if there is evidence of flow, if stagnant make a note on data sheet "No flow in sump". WW: Collect WW samples for evaluation. ONB Impair: Bact, N

MS4 Ranking:

Status:



Status and Recommendation based on the opinion of the BBNEP.

Stormwater Report for Catchment: ONB1043PI in the Town of Wareham



North Water Street

2018 Massachusetts Integrated Listed Water

Discharge to tributary of Onset Bay

MA95-02 Category 5 Estuary

Pollutants: Estuarine Bioassessments, Fecal Coliform

Pipe:

SNEP Project:

Urbanized:

Sewered:

Inventory Date

No Flow Observations

Rating by Weather (0-5):

Wet :

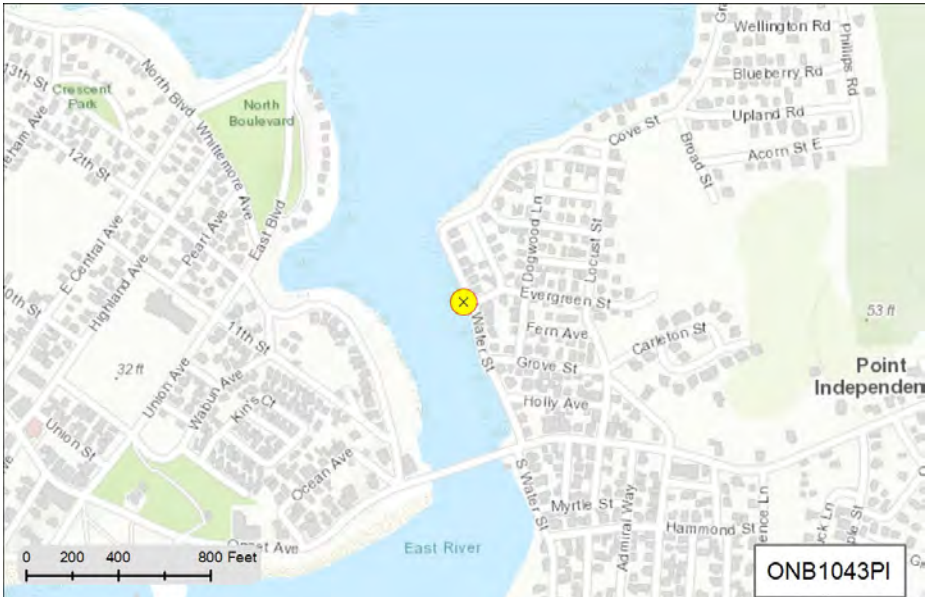
Dry :



Recommendation:

MS4 Ranking:

Status:



Status and Recommendation based on the opinion of the BBNEP.

Stormwater Report for Catchment: ONB1050PI in the Town of Wareham



Locust Street

2018 Massachusetts Integrated Listed Water
 Discharge to watershed of Onset Bay
 MA95-02 Category 5 Estuary
 Pollutants: Estuarine Bioassessments, Fecal Coliform

Pipe:

SNEP Project:
 Urbanized:
 Sewered:

Inventory Date

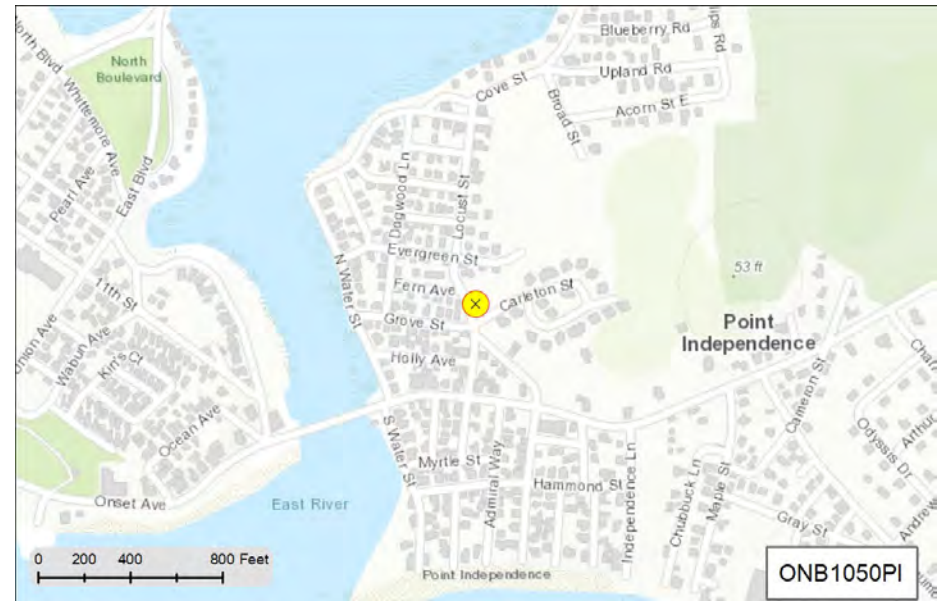
No Flow Observations

Rating by Weather (0-5):
 Wet :
 Dry :

Recommendation:

MS4 Ranking:

Status:



Status and Recommendation based on the opinion of the BBNEP.

Stormwater Report for Catchment: ONB1055PI in the Town of Wareham



Carlton Street

2018 Massachusetts Integrated Listed Water

Discharge to watershed of Onset Bay

MA95-02 Catagory 5 Estuary

Pollutants: Estuarine Bioassessments, Fecal Coliform

Pipe:

SNEP Project:

Urbanized:

Sewered:

Inventory Date

No Flow Observations

Rating by Weather (0-5):

Wet :

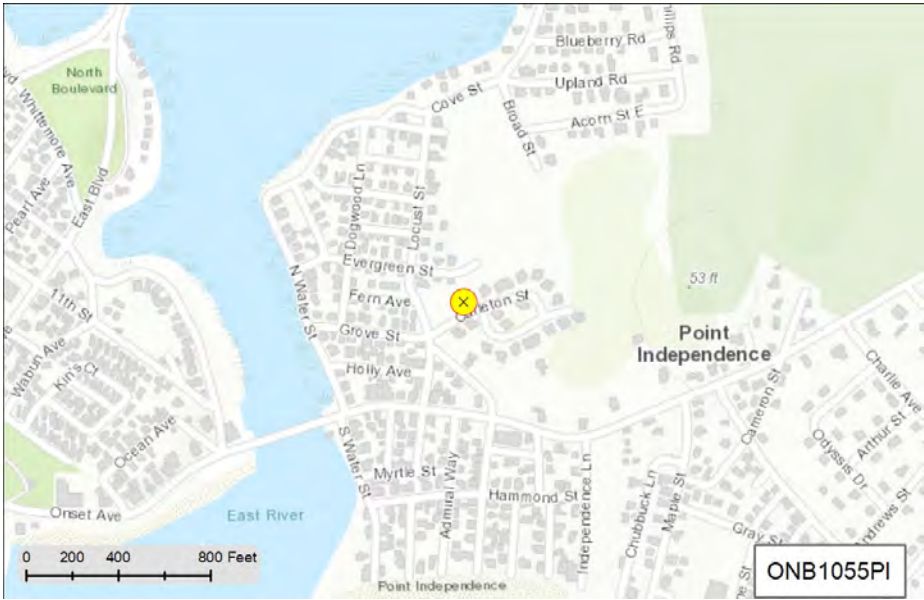
Dry :



Recommndation:

MS4 Ranking:

Status:



Status and Recommendation based on the opinion of the BBNEP.

Stormwater Report for Catchment: ONB1057PI in the Town of Wareham



Main Avenue

2018 Massachusetts Integrated Listed Water

Discharge to tributary of Onset Bay

MA95-02 Category 5 Estuary

Pollutants: Estuarine Bioassessments, Fecal Coliform

Pipe: 16 inch

SNEP Project: No

Urbanized: Yes

Sewered:

Inventory Date

No Flow Observations

Rating by Weather (0-5):

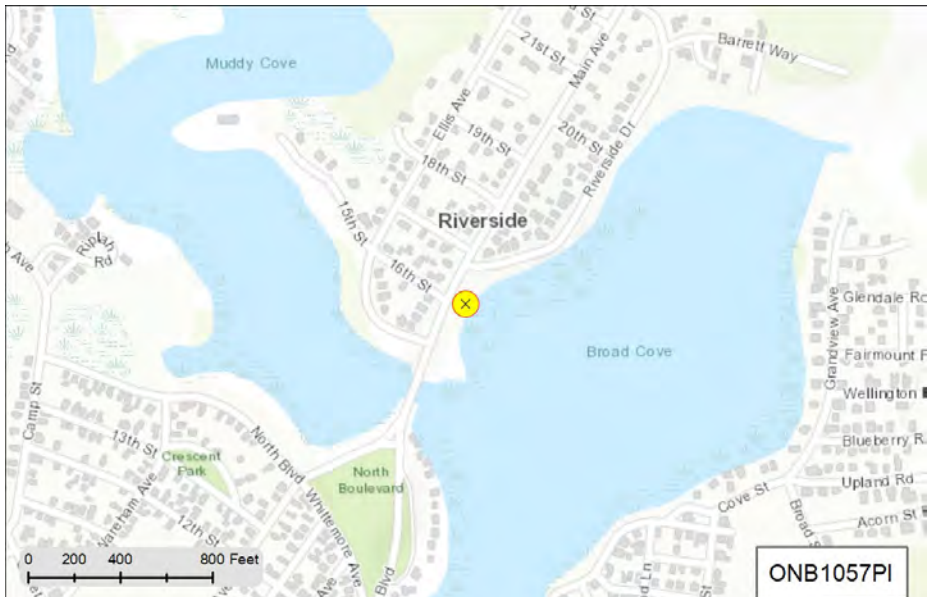
Wet :

Dry :

Recommendation:

MS4 Ranking:

Status:



Status and Recommendation based on the opinion of the BBNEP.

Stormwater Report for Catchment: ONB1060PI in the Town of Wareham



Cove Street

2018 Massachusetts Integrated Listed Water

Discharge to tributary of Onset Bay

MA95-02 Category 5 Estuary

Pollutants: Estuarine Bioassessments, Fecal Coliform

Pipe:

SNEP Project:

Urbanized:

Sewered:

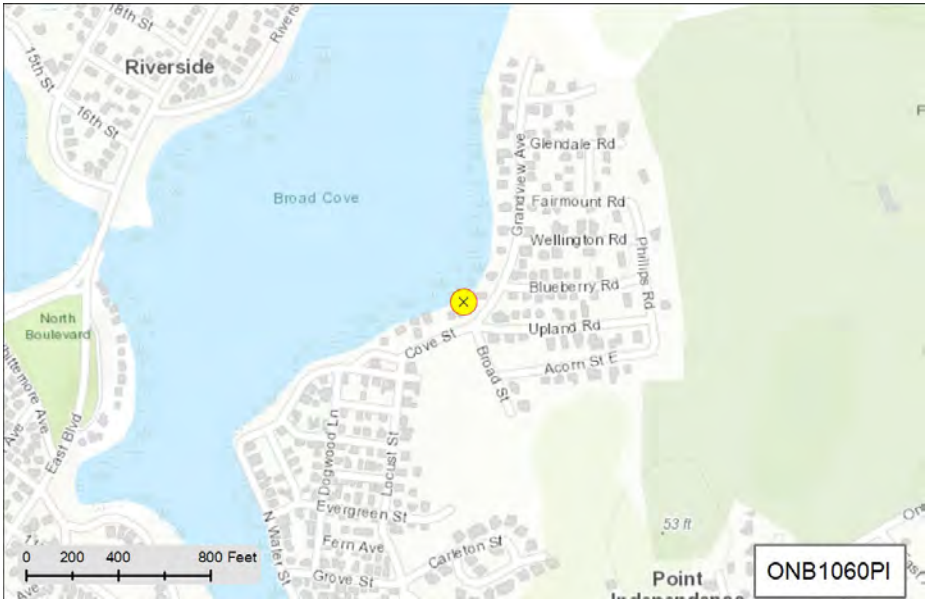
Inventory Date

No Flow Observations

Rating by Weather (0-5):

Wet :

Dry :



Recommendation:

MS4 Ranking:

Status:

Status and Recommendation based on the opinion of the BBNEP.

Stormwater Report for Catchment: ONB1061PI in the Town of Wareham



Riverside Drive

2018 Massachusetts Integrated Listed Water

Discharge to tributary of Onset Bay

MA95-02 Category 5 Estuary

Pollutants: Estuarine Bioassessments, Fecal Coliform

Pipe:

SNEP Project:

Urbanized:

Sewered:

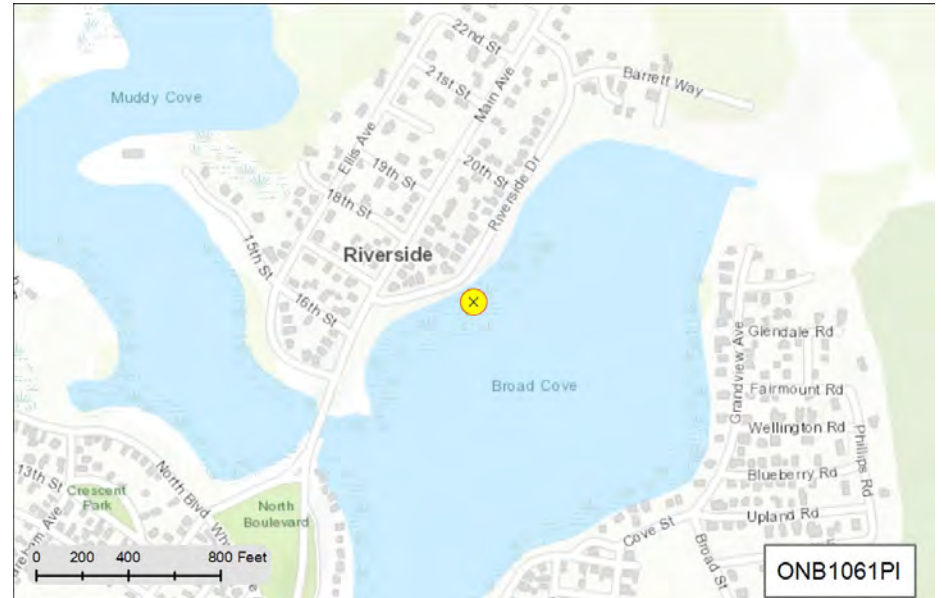
Inventory Date

No Flow Observations

Rating by Weather (0-5):

Wet :

Dry :



ONB1061PI



Recommendation:

MS4 Ranking:

Status:

Stormwater Report for Catchment: ONB1062PI in the Town of Wareham



Grandview Avenue

2018 Massachusetts Integrated Listed Water

Discharge to tributary of Onset Bay

MA95-02 Category 5 Estuary

Pollutants: Estuarine Bioassessments, Fecal Coliform

Pipe:

SNEP Project:

Urbanized:

Sewered:

Inventory Date

No Flow Observations

Rating by Weather (0-5):

Wet :

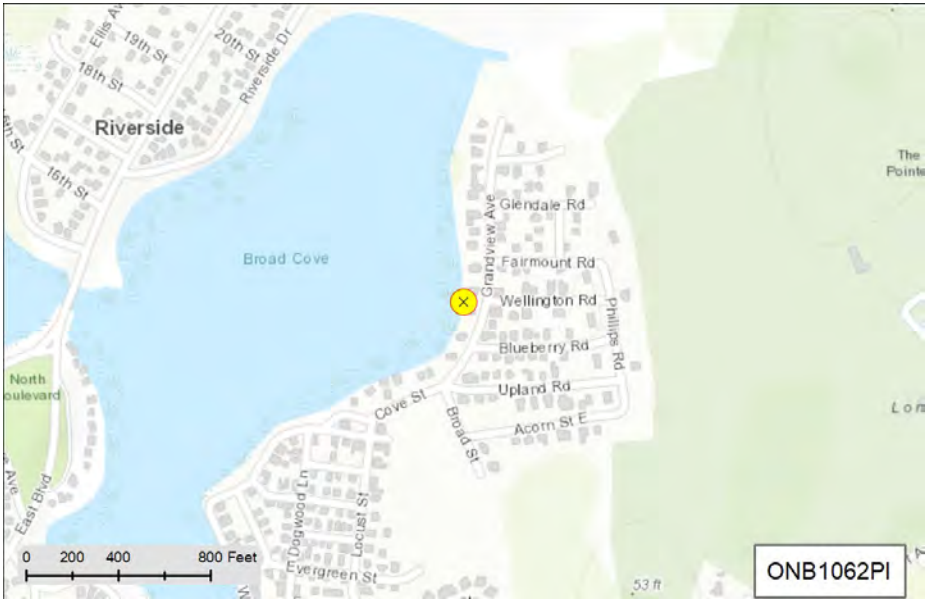
Dry :



Recommendation:

MS4 Ranking:

Status:



Status and Recommendation based on the opinion of the BBNEP.

Stormwater Report for Catchment: ONB1109PI in the Town of Wareham



Grandview Avenue

2018 Massachusetts Integrated Listed Water

Discharge to tributary of Onset Bay

MA95-02 Catagory 5 Estuary

Pollutants: Estuarine Bioassessments, Fecal Coliform

Pipe:

SNEP Project:

Urbanized:

Sewered:

Inventory Date

No Flow Observations

Rating by Weather (0-5):

Wet :

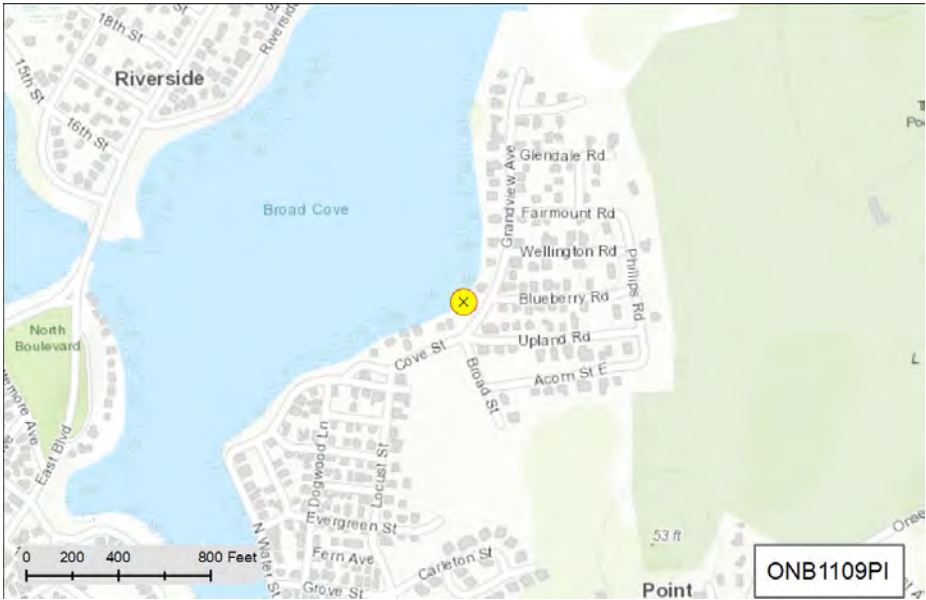
Dry :



Recommnedation:

MS4 Ranking:

Status:



Status and Recommendation based on the opinion of the BBNEP.

Stormwater Report for Catchment: ONB116PI in the Town of Wareham



North Water Street

2018 Massachusetts Integrated Listed Water

Discharge to tributary of Onset Bay

MA95-02 Category 5 Estuary

Pollutants: Estuarine Bioassessments, Fecal Coliform

Pipe:

SNEP Project:

Urbanized:

Sewered:

Inventory Date

No Flow Observations

Rating by Weather (0-5):

Wet :

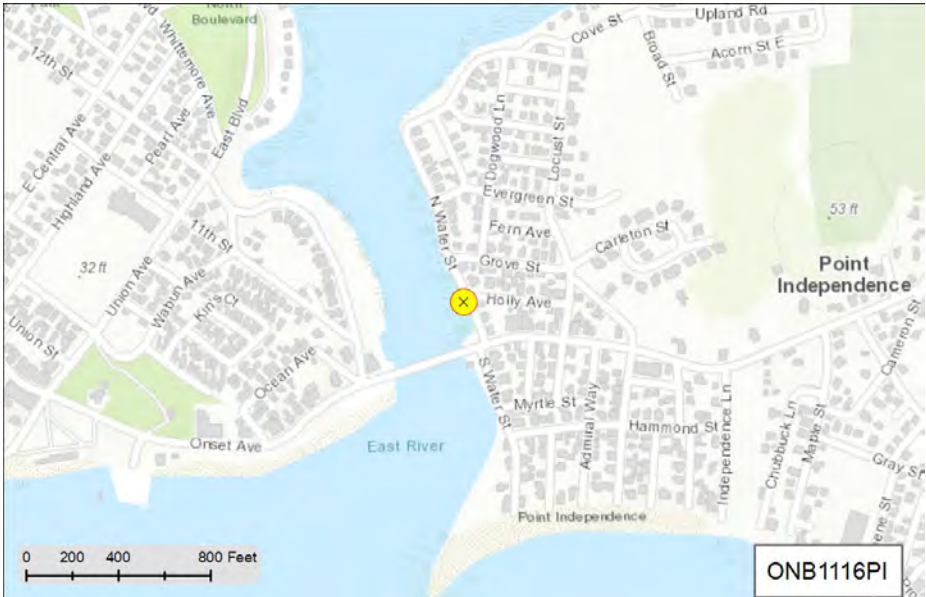
Dry :



Recommendation:

MS4 Ranking:

Status:



Status and Recommendation based on the opinion of the BBNEP.

Stormwater Report for Catchment: WBB1013PI in the Town of Wareham



Jefferson Shore Road

2018 Massachusetts Integrated Listed Water

Discharge directly to Buttermilk Bay

MA95-01 Category 5 Estuary

Pollutants: Estuarine Bioassessments, Nutrient/Eutrophication
Biological Indicators, Fecal Coliform

Pipe: Circular 12 inch Corrugated Metal

SNEP Project: Yes

Urbanized: Yes

Sewered: Yes

Inventory Date

No Flow Observations

Rating by Weather (0-5):

Wet :

Dry :

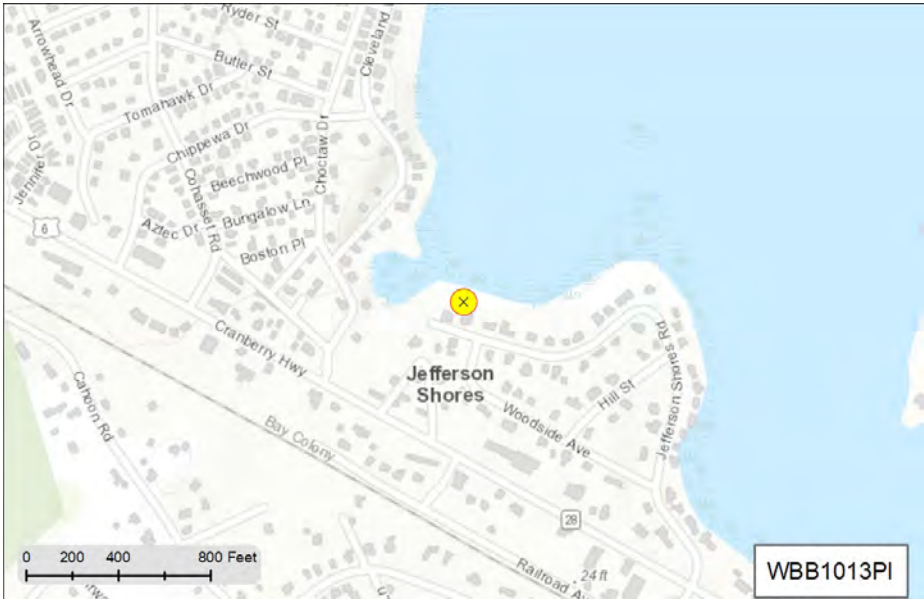


Recommendation:

DW: No flow, no issues. WW: Recommend collecting samples for evaluation (none collected). BB Impair: Bact and N.

MS4 Ranking:

Status:



Status and Recommendation based on the opinion of the BBNEP.

Stormwater Report for Catchment: WBB1014PI in the Town of Wareham



Jefferson Shore Road

2018 Massachusetts Integrated Listed Water

Discharge directly to Buttermilk Bay

MA95-01 Category 5 Estuary

Pollutants: Estuarine Bioassessments, Nutrient/Eutrophication
Biological Indicators, Fecal Coliform

Pipe:

SNEP Project: Yes

Urbanized: Yes

Sewered: Yes

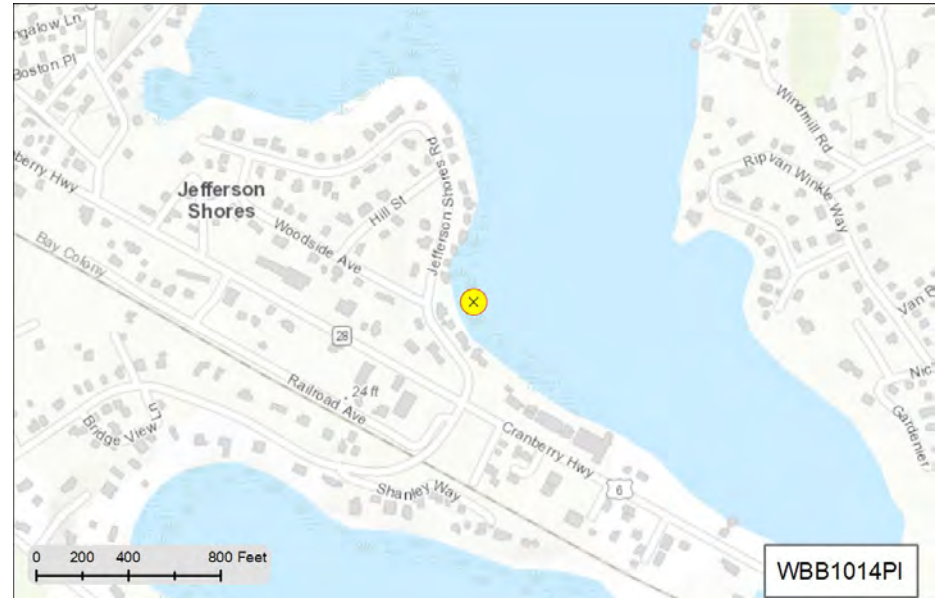
Inventory Date

No Flow Observations

Rating by Weather (0-5):

Wet :

Dry :



Recommendation:

DW: No flow, no issues. WW: Recommend collecting samples for evaluation (none collected). BB Impair: Bact and N.

MS4 Ranking:

Status:

Stormwater Report for Catchment: WBB1015PI in the Town of Wareham



Cranberry Highway

2018 Massachusetts Integrated Listed Water

Discharge directly to Buttermilk Bay

MA95-01 Category 5 Estuary

Pollutants: Estuarine Bioassessments, Nutrient/Eutrophication
Biological Indicators, Fecal Coliform

Pipe: Circular 18 inch Concrete

SNEP Project: Yes

Urbanized: Yes

Sewered: Yes

Inventory Date

No Flow Observations

Rating by Weather (0-5):

Wet :

Dry :

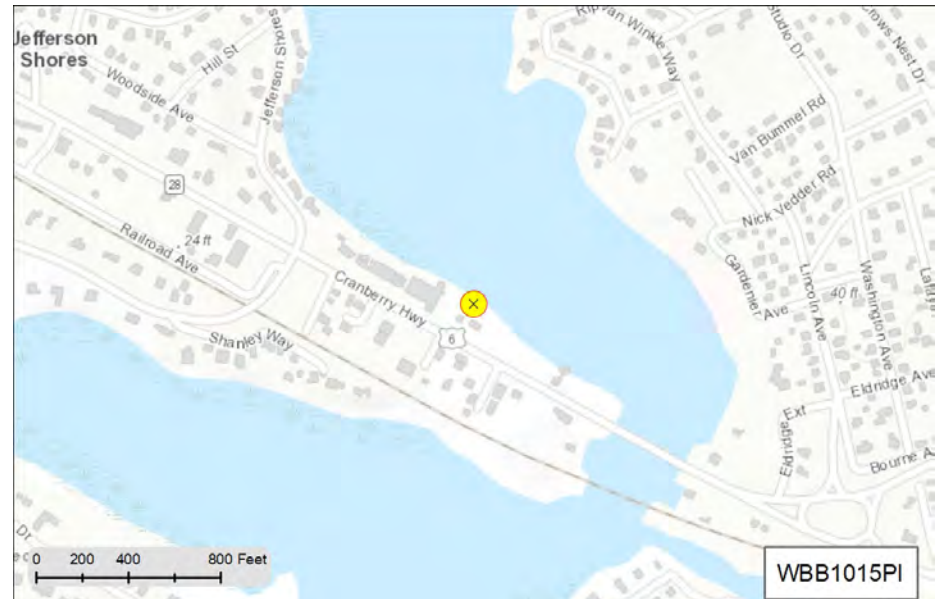


Recommendation:

DW: No flow, no issues. WW Rank (1 sample): Bact (1)Surf (1), Total 2. Recommend: Collect additional WW samples. BB Impair: Bact and N.

MS4 Ranking:

Status:



Status and Recommendation based on the opinion of the BBNEP.

Stormwater Report for Catchment: WBB1016PI in the Town of Wareham



Jefferson Shore Road

2018 Massachusetts Integrated Listed Water
 Discharge directly to Buttermilk Bay
 MA95-01 Category 5 Estuary
 Pollutants: Estuarine Bioassessments, Nutrient/Eutrophication
 Biological Indicators, Fecal Coliform

Pipe:

SNEP Project: Yes

Urbanized: Yes

Sewered: Yes

Inventory Date

No Flow Observations

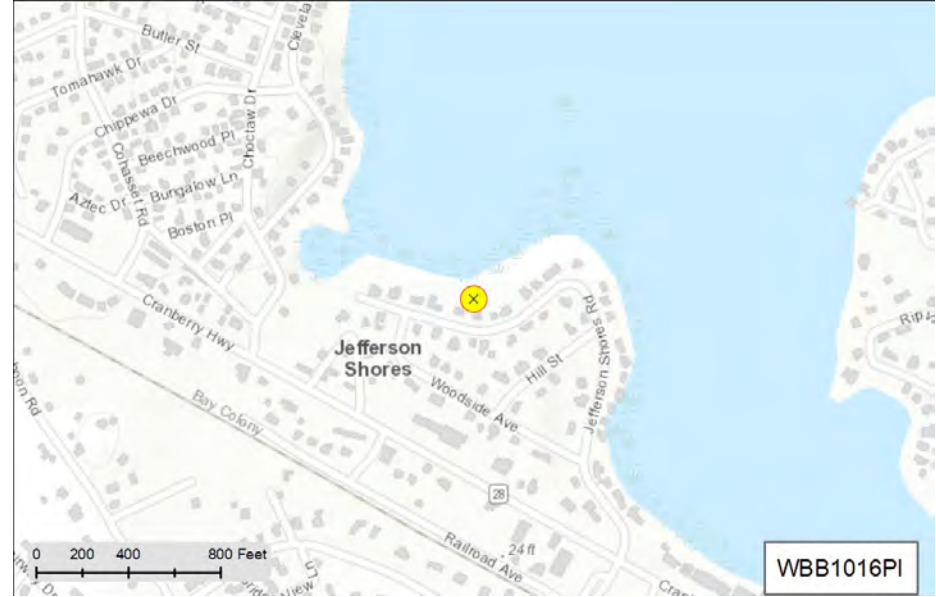
Rating by Weather (0-5):
 Wet :
 Dry :



Recommendation:
 DW: No flow, no issues. WW: Recommend collecting samples for evaluation (none collected). BB Impair: Bact and N.

MS4 Ranking:

Status:



Status and Recommendation based on the opinion of the BBNEP.

Stormwater Report for Catchment: WBB1020PI in the Town of Wareham



Chippewa Drive

2018 Massachusetts Integrated Listed Water

Discharge directly to Buttermilk Bay

MA95-01 Category 5 Estuary

Pollutants: Estuarine Bioassessments, Nutrient/Eutrophication
Biological Indicators, Fecal Coliform

Pipe: Circular 12 inch PVC

SNEP Project: Yes

Urbanized: Yes

Sewered: Yes

Inventory Date

No Flow Observations

Rating by Weather (0-5):

Wet :

Dry :

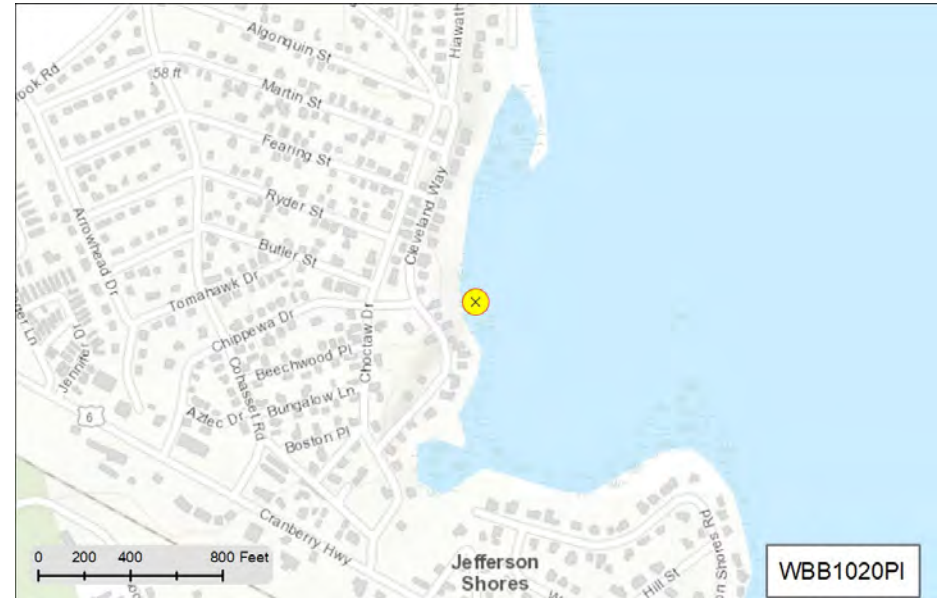


Recommendation:

DW: No flow, no issues. WW Recommendation: Need to check status of the drainage system on Chippewa. Two underground infiltration systems are installed just downhill of Choctaw and downhill of Cleveland. Cleanout if needed. Observe how the system is functioning during rain (flowing into infiltration or bypassing and flowing into the main stormdrain system). BB Impair: Bact and N.

MS4 Ranking:

Status:



Status and Recommendation based on the opinion of the BBNEP.

Stormwater Report for Catchment: WBB1021PI in the Town of Wareham



Jefferson Shore Road

2018 Massachusetts Integrated Listed Water

Discharge directly to Buttermilk Bay

MA95-01 Category 5 Estuary

Pollutants: Estuarine Bioassessments, Nutrient/Eutrophication
Biological Indicators, Fecal Coliform

Pipe: Circular 12 inch PVC

SNEP Project: Yes

Urbanized: Yes

Sewered: Yes

Inventory Date

No Flow Observations

Rating by Weather (0-5):

Wet :

Dry :

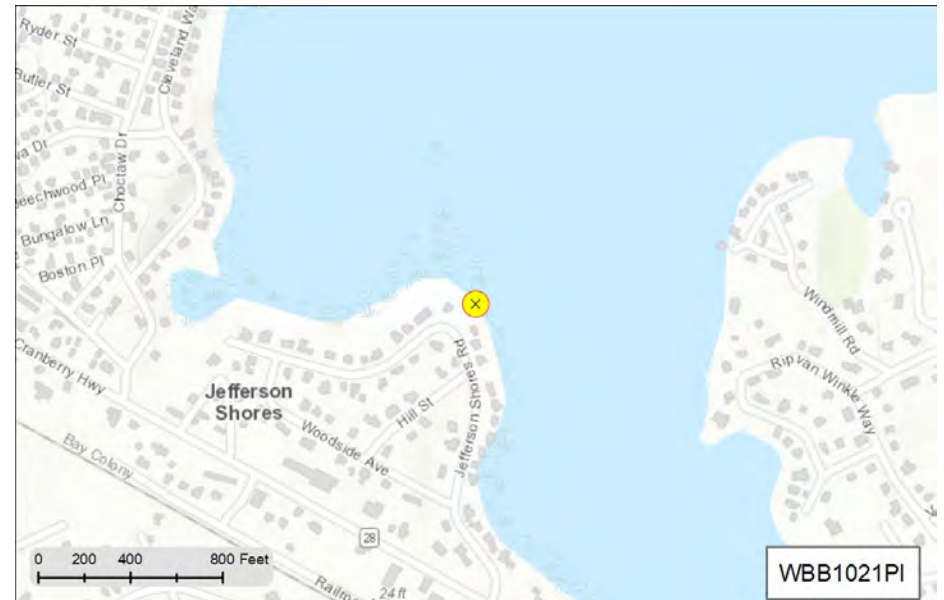


Recommendation:

WW: Recommend taking samples from road surface at both WBB1169CB and WBB1171CB. BB Impair: Bact and N.

MS4 Ranking:

Status:



Status and Recommendation based on the opinion of the BBNEP.

Stormwater Report for Catchment: WBB1022PI in the Town of Wareham



Cleveland Way

2018 Massachusetts Integrated Listed Water

Discharge directly to Buttermilk Bay

MA95-01 Category 5 Estuary

Pollutants: Estuarine Bioassessments, Nutrient/Eutrophication
Biological Indicators, Fecal Coliform

Pipe:

SNEP Project: Yes

Urbanized: Yes

Sewered: Yes

Inventory Date

No Flow Observations

Rating by Weather (0-5):

Wet :

Dry :

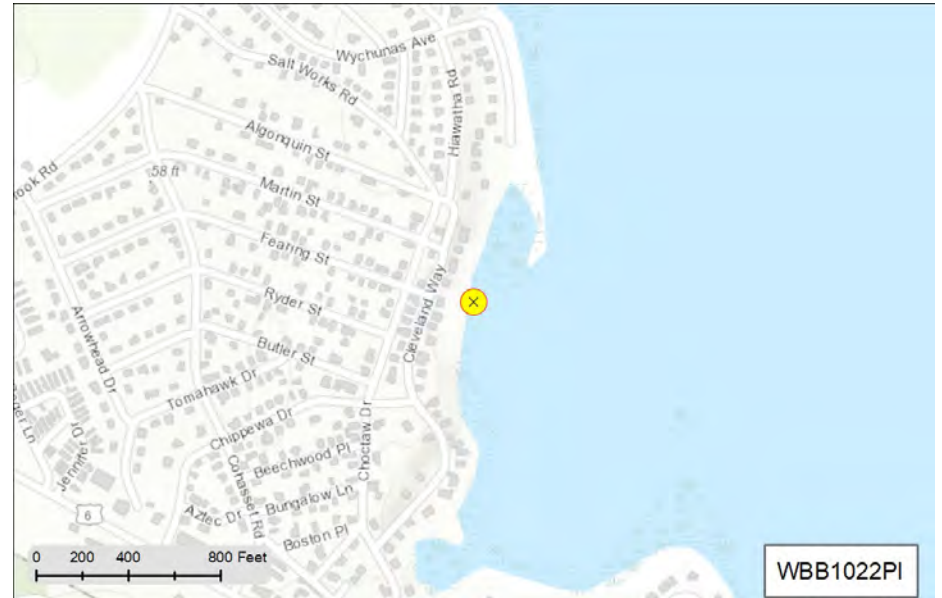


Recommendation:

DW: No flow, no issues. WW Recommendation: Need to check status of the infiltration systems on Choctaw, Cleveland and Fearing. Cleanout if needed. Observe how the system is functioning during rain (flowing into infiltration or bypassing and flowing into the main stormdrain system). BB Impair: Bact and N.

MS4 Ranking:

Status:



Status and Recommendation based on the opinion of the BBNEP.

Stormwater Report for Catchment: WBB1023PI in the Town of Wareham



Algonquin Street

2018 Massachusetts Integrated Listed Water

Discharge directly to Buttermilk Bay

MA95-01 Category 5 Estuary

Pollutants: Estuarine Bioassessments, Nutrient/Eutrophication
Biological Indicators, Fecal Coliform

Pipe: Circular 12 inch PVC

SNEP Project: Yes

Urbanized: Yes

Sewered: Yes

Inventory Date

No Flow Observations

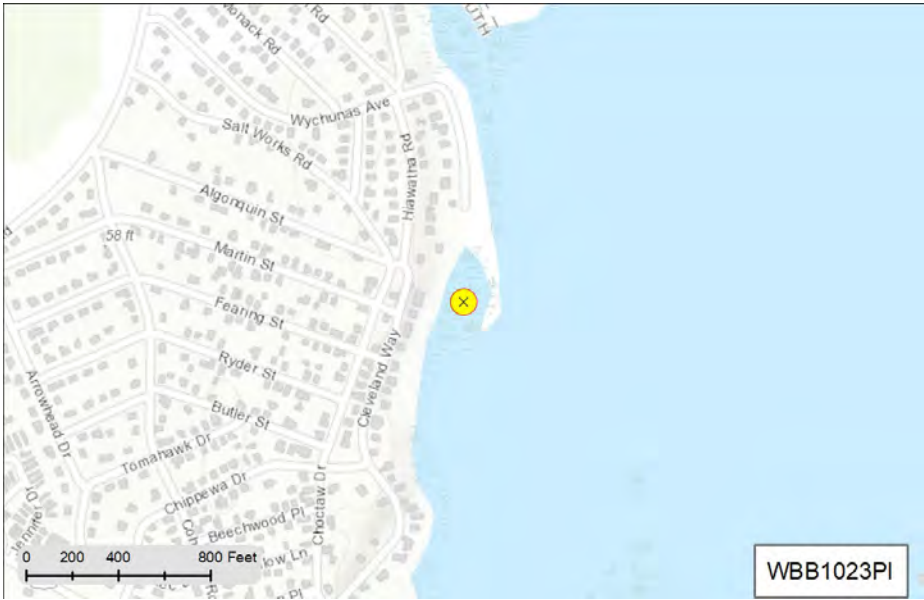
Rating by Weather (0-5):
Wet :
Dry :

Recommendation:

DW: No flow, no issues. WW Recommendation: Need to check status of the infiltration system on Town Way. Cleanout if needed. Observe how the system is functioning during rain (flowing into infiltration or bypassing and flowing into the main stormdrain system). BB Impair: Bact and N.

MS4 Ranking:

Status:



WBB1023PI



Status and Recommendation based on the opinion of the BBNEP.

Stormwater Report for Catchment: WBB1024PI in the Town of Wareham



Wychunas Avenue

2018 Massachusetts Integrated Listed Water

Discharge directly to Buttermilk Bay

MA95-01 Category 5 Estuary

Pollutants: Estuarine Bioassessments, Nutrient/Eutrophication
Biological Indicators, Fecal Coliform

Pipe:

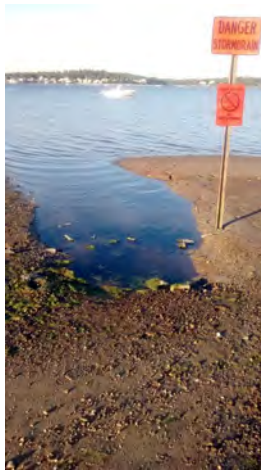
SNEP Project: Yes

Urbanized: Yes

Sewered: Yes

Inventory Date

No Flow Observations



Rating by Weather (0-5):

Wet :

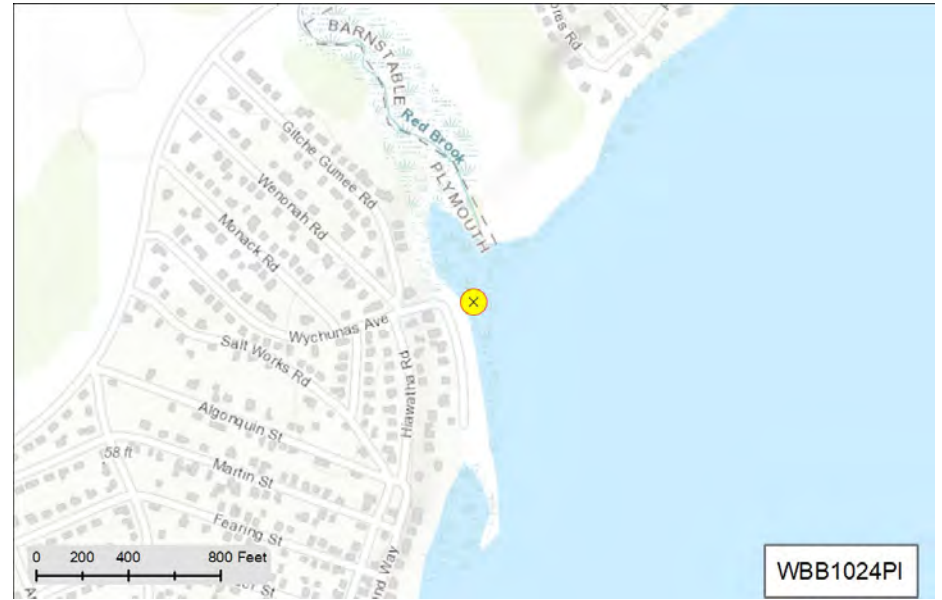
Dry :

Recommendation:

DW: No flow, no issues. WW Recommendation: Need to check status of the infiltration systems throughout the drainage area. Cleanout if needed. Observe how the system is functioning during rain (flowing into infiltration or bypassing and flowing into the main stormdrain system). BB Impair: Bact and N.

MS4 Ranking:

Status:



Status and Recommendation based on the opinion of the BBNEP.

Stormwater Report for Catchment: WSR1025PI in the Town of Wareham



Rose Point Avenue

2018 Massachusetts Integrated Listed Water

Discharge directly to Sippican River

MA95-07 Catagory 4A Estuary

Pollutants: Fecal Coliform

Pipe:

SNEP Project: Yes

Urbanized: Yes

Sewered: Yes

Inventory Date

No Flow Observations

Rating by Weather (0-5):

Wet :

Dry :

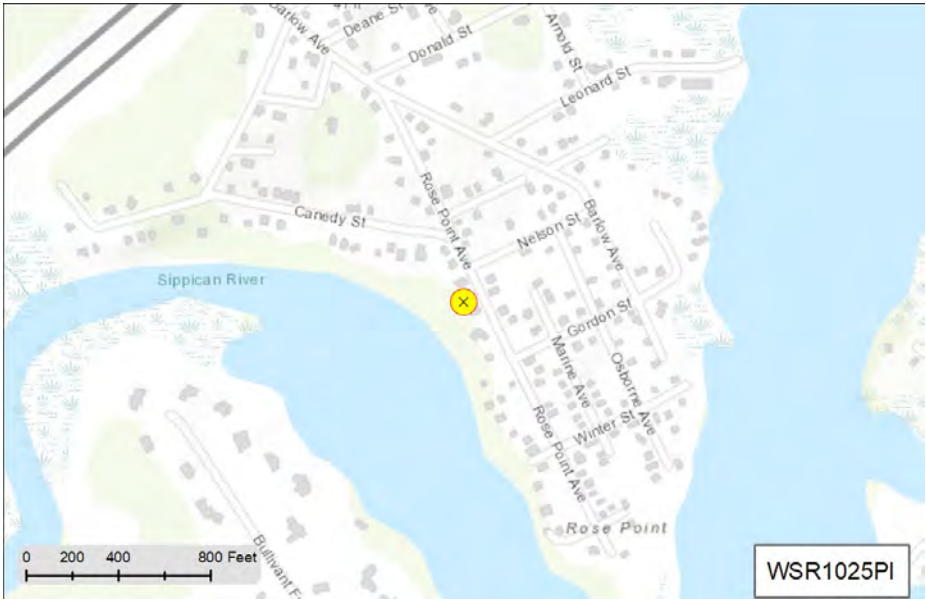


Recommendation:

DW: No flow, no issues. WW: Recommend: Monitor for WW, if discharge is brackish or tidally blocked, monitor road surface at both WSR1070CB and WSR1072CB. Sip R Impair: Bact.

MS4 Ranking:

Status:



Status and Recommendation based on the opinion of the BBNEP.

Stormwater Report for Catchment: WWA1001PI in the Town of Wareham



Marks Cove Road

2018 Massachusetts Integrated Listed Water

Discharge directly to Wareham River

MA95-03 Category 5 Estuary

Pollutants: Estuarine Bioassessments, Nitrogen (Total), Fecal Coliform

Pipe: Circular 12 inch Metal

SNEP Project: Yes

Urbanized: Yes

Sewered: Yes

Inventory Date 4/20/2016

No Flow Observations

Rating by Weather (0-5):

Wet :

Dry :

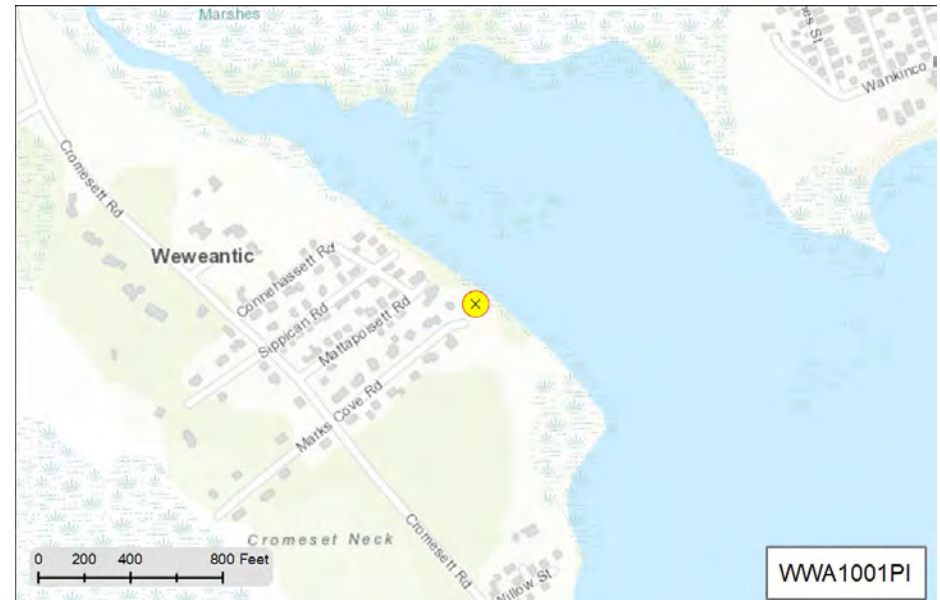


Recommendation:

Only 1 sample for DW and none for WW. DW rank: Bact (1), Total 1. Recommend continue DW and WW monitoring at low tide. Check salinity first, if less than 5.5 monitor, if greater than 5.5 monitor WWA2546CB. Warh R Impair: Bact and N.

MS4 Ranking: High Priority Outfall

Status: Evaluation Not Complete



Status and Recommendation based on the opinion of the BBNEP.

Stormwater Report for Catchment: WWA1002PI in the Town of Wareham



Mattapoissett Road

2018 Massachusetts Integrated Listed Water

Discharge directly to Wareham River

MA95-03 Category 5 Estuary

Pollutants: Estuarine Bioassessments, Nitrogen (Total), Fecal Coliform

Pipe:

SNEP Project:

Urbanized:

Sewered:

Inventory Date

No Flow Observations

Rating by Weather (0-5):

Wet :

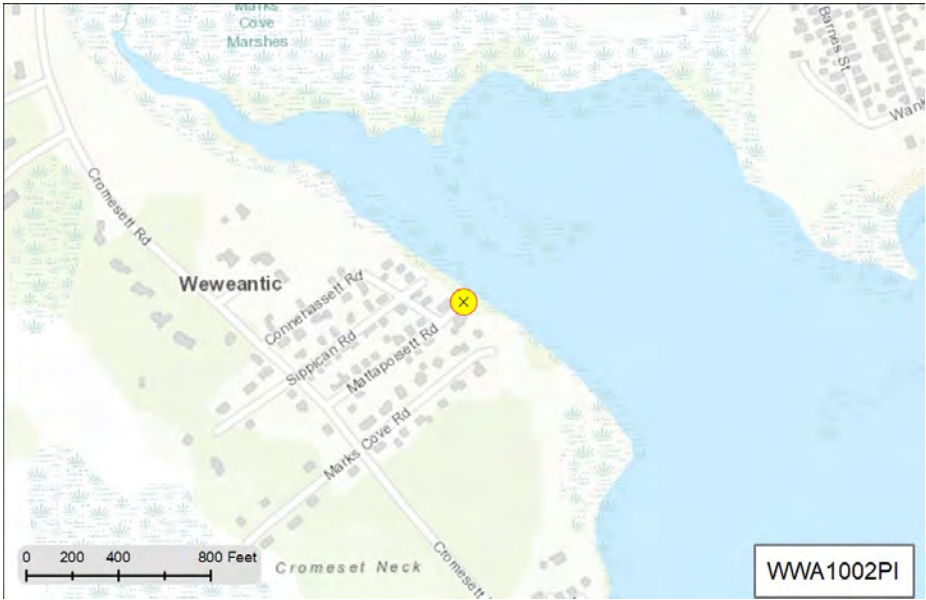
Dry :

Recommendation:

DW: No flow, no issues. WW: Recommend monitoring during WW, if discharge is brackish greater than 5.5), move monitoring site to the first inline upstream CB. Need to check CB pipes to determine upstream connectivity. Warh R Impair: Bact and N.

MS4 Ranking:

Status:



Status and Recommendation based on the opinion of the BBNEP.

Stormwater Report for Catchment: WWA1003PI in the Town of Wareham



Coonehasset Road

2018 Massachusetts Integrated Listed Water

Discharge directly to Wareham River

MA95-03 Category 5 Estuary

Pollutants: Estuarine Bioassessments, Nitrogen (Total), Fecal Coliform

Pipe:

SNEP Project: Yes

Urbanized: Yes

Sewered: Yes

Inventory Date

No Flow Observations

Rating by Weather (0-5):

Wet :

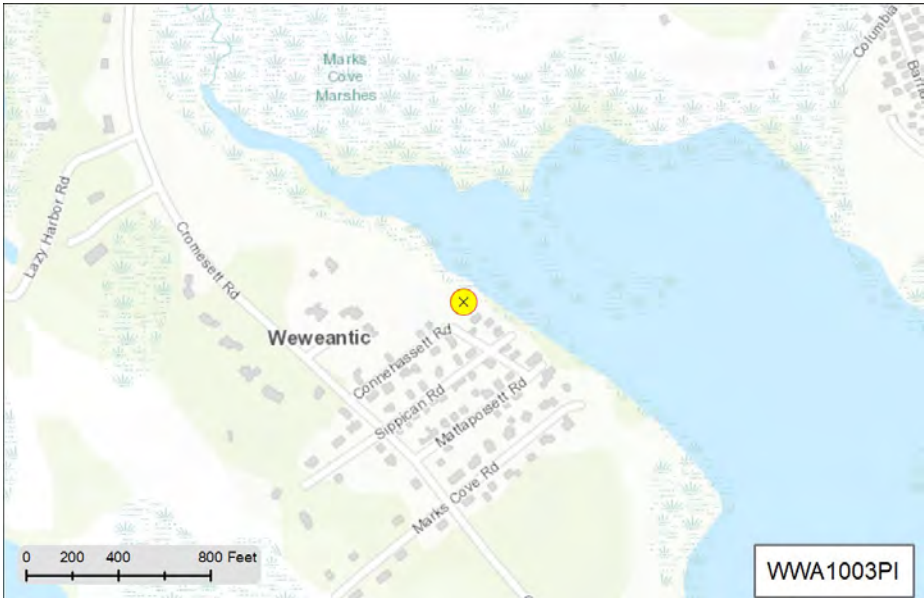
Dry :

Recommendation:

DW: 2 samples in CB sump, may be residual in the sump or an indication of an issue. DW rank: Bact (1), Surf (1), No WW samples. Recommend continue DW and WW monitoring. For DW monitor only if there is evidence of flow (not stagnant). Indicate on data sheet if the sump is flowing or stagnant. Warh R Impair: Bact and N.

MS4 Ranking:

Status:



Status and Recommendation based on the opinion of the BBNEP.

**Stormwater Report for Catchment: WWA1006PI
in the Town of Wareham**



Murphy Street

2018 Massachusetts Integrated Listed Water

Discharge directly to Wareham River

MA95-03 Catagory 5 Estuary

Pollutants: Estuarine Bioassessments, Nitrogen (Total), Fecal Coliform

Pipe:

SNEP Project: Yes

Urbanized: Yes

Sewered: Yes

Inventory Date

No Flow Observations

Rating by Weather (0-5):

Wet :

Dry :

Recommndation:

DW: No flow, no issues. WW rank (1 sample): Bact (2), Total 2.
Recommend: Continue monitoring during WW. Warh R Impair: Bact and N.

MS4 Ranking:

Status:



Status and Recommendation based on the opinion of the BBNEP.

**Stormwater Report for Catchment: WWA1008PI
in the Town of Wareham**



Roby Street

2018 Massachusetts Integrated Listed Water

Discharge to tributary of Wareham River

MA95-03 Category 5 Estuary

Pollutants: Estuarine Bioassessments, Nitrogen (Total), Fecal Coliform

Pipe:

SNEP Project: Yes

Urbanized: Yes

Sewered: Yes

Inventory Date

No Flow Observations

Rating by Weather (0-5):

Wet :

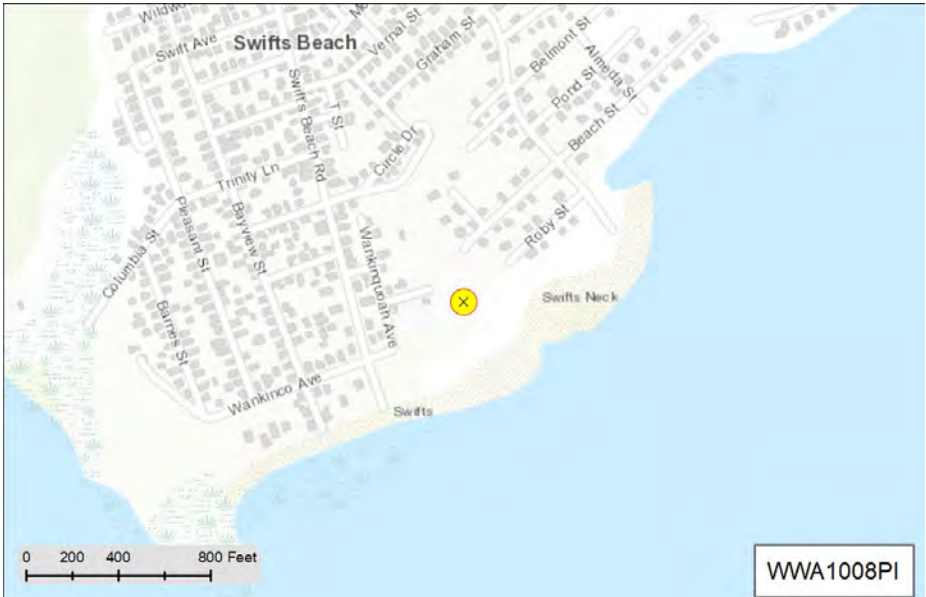
Dry :

Recommendation:

DW: no flow, no issues. WW: monitor the road surface at both WWA1070CB and WWA1071CB. Warh R Impair: Bact and N.

MS4 Ranking:

Status:



Status and Recommendation based on the opinion of the BBNEP.

Stormwater Report for Catchment: WWA1009PI in the Town of Wareham



Ruggles Street

2018 Massachusetts Integrated Listed Water

Discharge to tributary of Wareham River

MA95-03 Category 5 Estuary

Pollutants: Estuarine Bioassessments, Nitrogen (Total), Fecal Coliform

Pipe:

SNEP Project: Yes

Urbanized: Yes

Sewered: Yes

Inventory Date

No Flow Observations

Rating by Weather (0-5):

Wet :

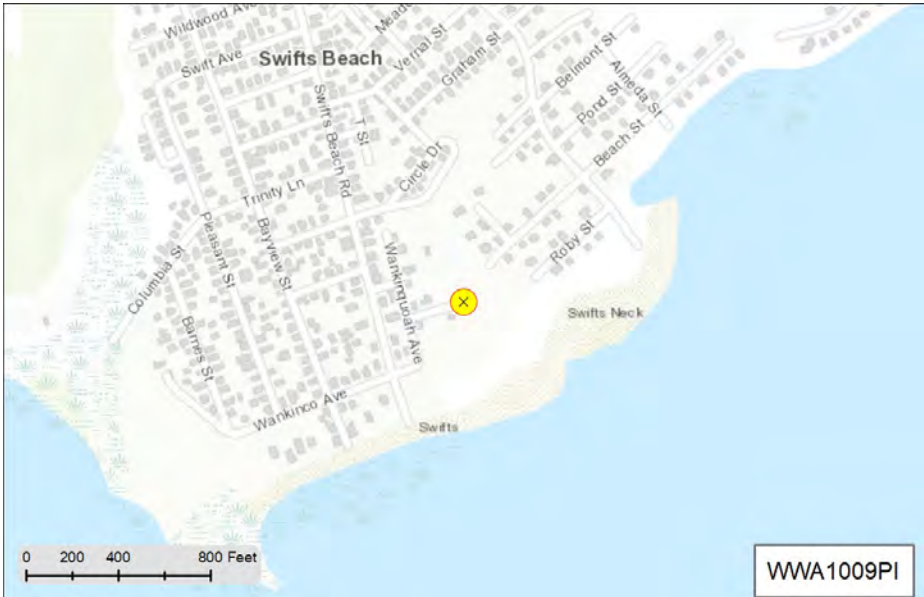
Dry :

Recommendation:

DW: no flow, no issues. Recommend continued monitoring in WW, start at first CB upstream (confirm WWA1056CB), check salinity first if 5.5 or less continue monitoring, if > 5.5 monitor the next upstream inline CB (WWA1047CB or WWA1049CB). Confirm drainage connectivity onsite. Warh R Impair: Bact and N.

MS4 Ranking:

Status:



Status and Recommendation based on the opinion of the BBNEP.

Stormwater Report for Catchment: WWA1010PI in the Town of Wareham



Circle Drive

2018 Massachusetts Integrated Listed Water

Discharge to tributary of Wareham River

MA95-03 Category 5 Estuary

Pollutants: Estuarine Bioassessments, Nitrogen (Total), Fecal Coliform

Pipe:

SNEP Project: Yes

Urbanized: Yes

Sewered: Yes

Inventory Date

No Flow Observations

Rating by Weather (0-5):

Wet :

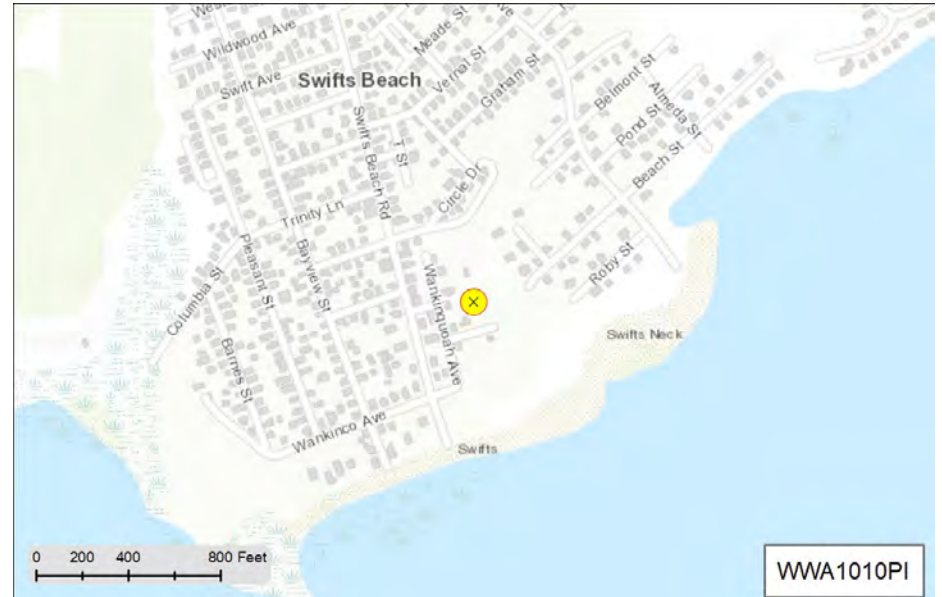
Dry :

Recommendation:

DW (2 samples): 1 sample. Bact moderate. DW rank: Bact (1) , Total 1. WW rank (1 sample): Bact (1), Nitrates (1), Total 2. Recommend: Continue monitoring for DW and WW. For DW take a sample only if the sump does not appear to be stagnant. Make note on data sheet if sump was stagnant or flowing. DW and WW: start at first CB upstream (confirm drainage onsite (WWA1080CB?), check salinity first, if > 5.5 or less continue monitoring, if > 5.5 monitor the next upstream inline CB (WWA1073CB/WWA1076CB?). Warh R Impair: Bact and N.

MS4 Ranking:

Status:



Status and Recommendation based on the opinion of the BBNEP.

Stormwater Report for Catchment: WWA1011PI in the Town of Wareham



Parker Drive

2018 Massachusetts Integrated Listed Water

Discharge to tributary of Cedar Island Creek

MA95-52 Catagory 4A Estuary

Pollutants: Fecal Coliform

Pipe:

SNEP Project: Yes

Urbanized: Yes

Sewered: Yes

Inventory Date

No Flow Observations

Rating by Weather (0-5):

Wet :

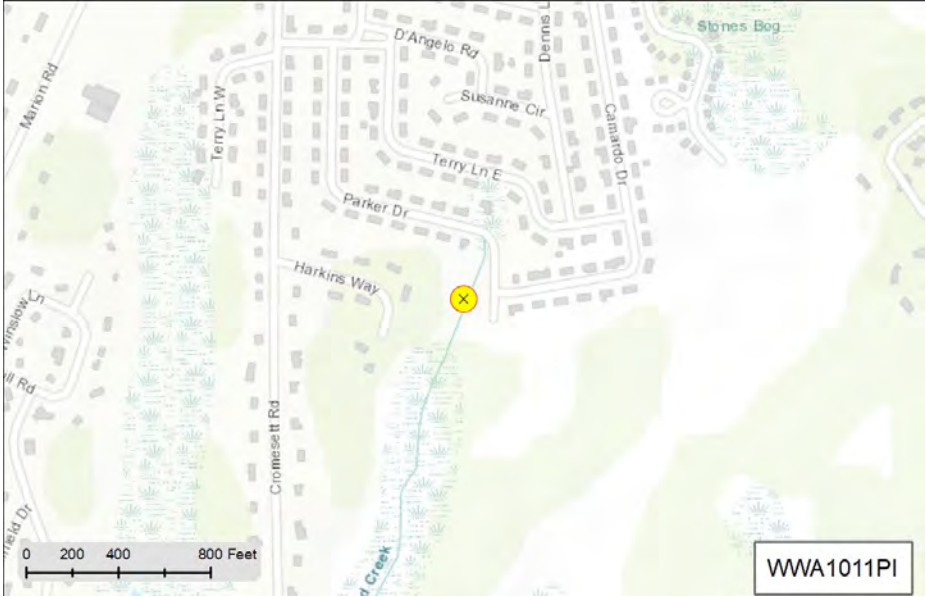
Dry :

Recommndation:

DW Rank (2 samples in sump): Bact (1), Amm/Nitrates (1 ea), Total 3. Recommend: Continue monitoring for DW and WW (no samples taken). For DW take a sample only if the sump does not appear to be stagnant. Make note on data sheet if sump was stagnant or flowing. DW and WW: Start at first inline upstream structure (confirm drainage connectivity onsite), check salinity first if 5.5 or less continue monitoring, if > 5.5 monitor the next upstream inline structure). Warh R Impair: Bact and N.

MS4 Ranking:

Status:



Status and Recommendation based on the opinion of the BBNEP.

Stormwater Report for Catchment: WWA1012PI in the Town of Wareham



Parker Drive

2018 Massachusetts Integrated Listed Water

Discharge to tributary of Cedar Island Creek

MA95-52 Catagory 4A Estuary

Pollutants: Fecal Coliform

Pipe:

SNEP Project: Yes

Urbanized: Yes

Sewered: Yes

Inventory Date

No Flow Observations

Rating by Weather (0-5):

Wet :

Dry :

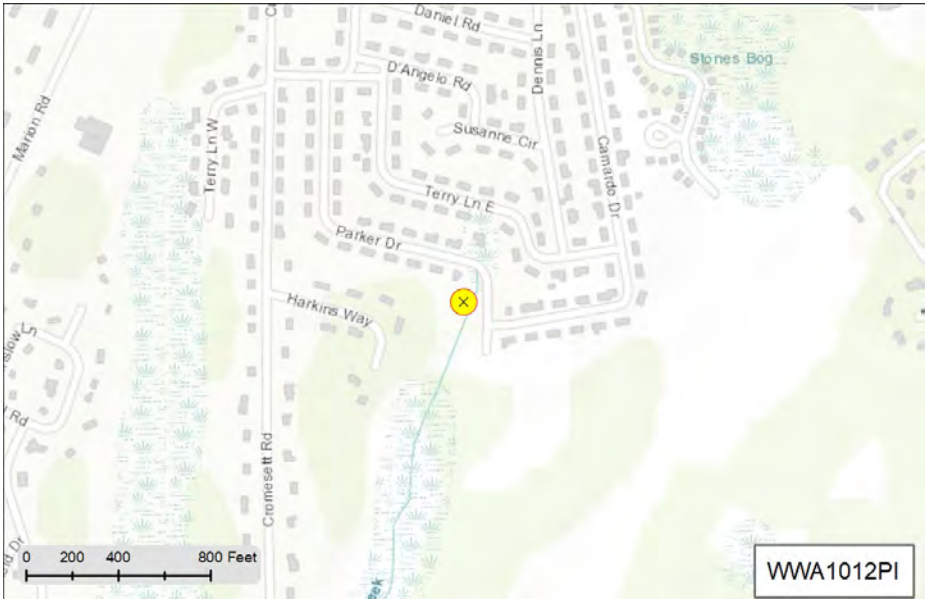


Recommnedation:

DW: no flow, no issues. Recommend: Continue to monitor for WW (no samples taken). Warh R Impair: Bact and N.

MS4 Ranking:

Status:



WWA1012PI



Status and Recommendation based on the opinion of the BBNEP.

Stormwater Report for Catchment: WWA1019PI in the Town of Wareham



Worrall Avenue

2018 Massachusetts Integrated Listed Water

Discharge directly to Wareham River

MA95-03 Catagory 5 Estuary

Pollutants: Estuarine Bioassessments, Nitrogen (Total), Fecal Coliform

Pipe:

SNEP Project: Yes

Urbanized: Yes

Sewered: Yes

Inventory Date

No Flow Observations

Rating by Weather (0-5):

Wet :

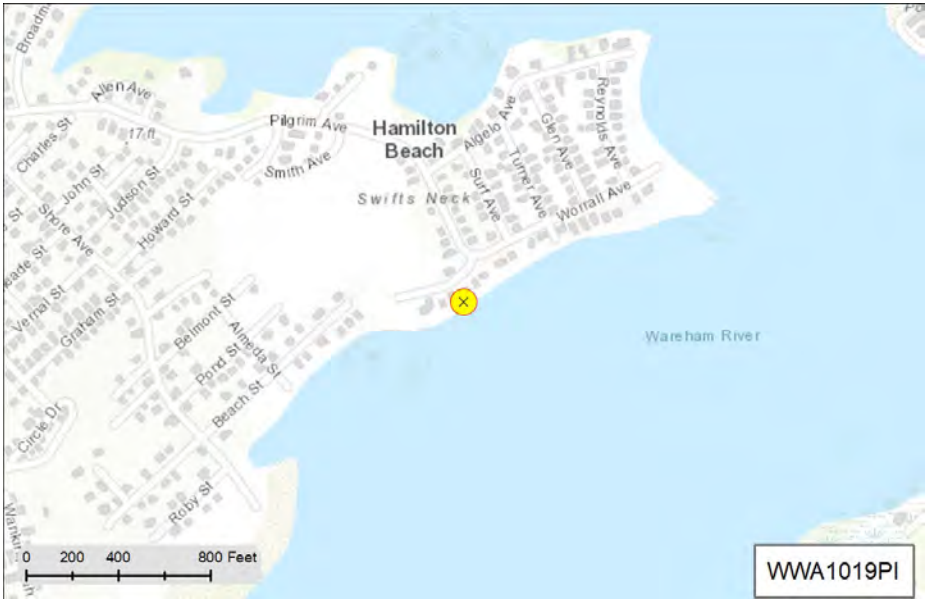
Dry :

Recommndation:

Recommend: Continue monitoring DW and WW. For both DW and WW, monitor at low tide. For DW take a sample only if the sump does not appear to be stagnant. Make note on data sheet if sump was stagnant or flowing. DW and WW: check salinity first if 5.5 or less continue monitoring. If > 5.5 for WW, monitor flow from street surface at CB. For DW (salinity> 5.5, do not monitor, but document salinity on data sheet). Warh R Impair: Bact and N

MS4 Ranking:

Status:



Status and Recommendation based on the opinion of the BBNEP.

Stormwater Report for Catchment: WWA1022PI in the Town of Wareham



Broadmarsh Avenue

2018 Massachusetts Integrated Listed Water

Discharge to tributary of Broad Marsh River

MA95-49 Category 4A Estuary

Pollutants: Fecal Coliform

Pipe:

SNEP Project: Yes

Urbanized: Yes

Sewered: Yes

Inventory Date

No Flow Observations

Rating by Weather (0-5):

Wet :

Dry :

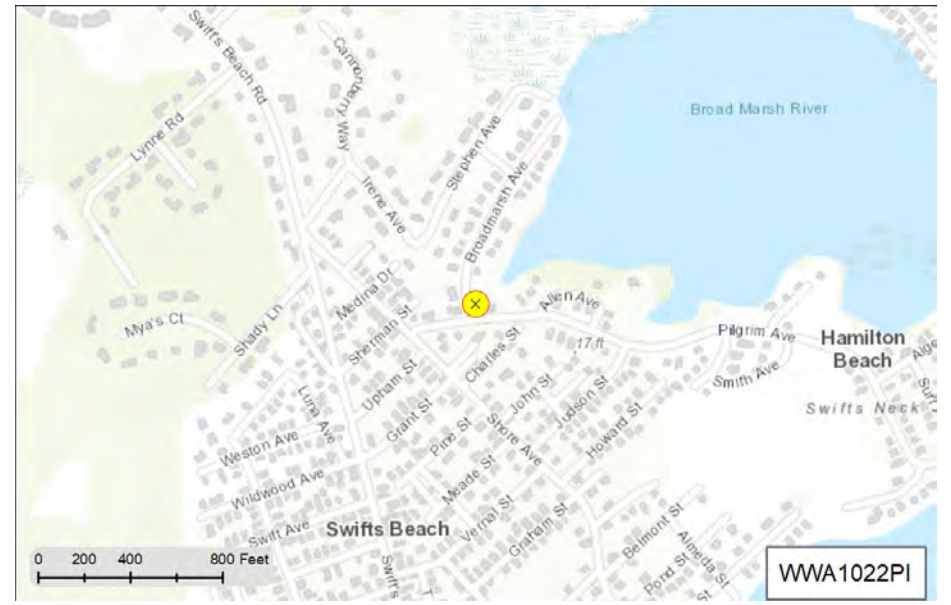


Recommendation:

DW: No flow, no issues. WW: (1 sample) Rank: Bact (1), Amm/N/Surf (1 ea). Total 4. This drainage system has an underground infiltration practice. Recommend inspecting infiltration sytem in the rain to establish functionality. Clean out as needed. Continue monitoring. Inspect drainage system for potential ID. BMR Impair: Bact.

MS4 Ranking:

Status:



Status and Recommendation based on the opinion of the BBNEP.

Stormwater Report for Catchment: WWA1024PI in the Town of Wareham



Broadmarsh Avenue

2018 Massachusetts Integrated Listed Water

Discharge to tributary of Broad Marsh River

MA95-49 Catagory 4A Estuary

Pollutants: Fecal Coliform

Pipe:

SNEP Project: Yes

Urbanized: Yes

Sewered: Yes

Inventory Date

No Flow Observations

Rating by Weather (0-5):

Wet :

Dry :

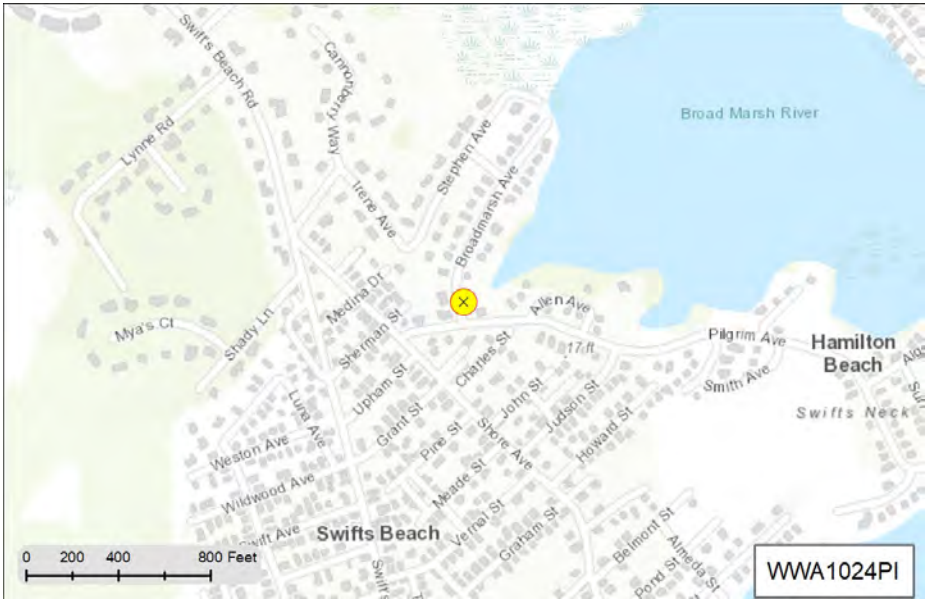


Recommnedation:

DW: No flow, no issues. WW: (1 sample) Rank: Bact (1), N/Surf (1 ea). Total 4. This drainage system has an underground infiltration practice. Recommend inspecting infiltration sytem in the rain to establish functionality. Clean out as needed. Continue monitoring. Inspect drainage system for potential ID. BMR Impair: Bact.

MS4 Ranking:

Status:



Status and Recommendation based on the opinion of the BBNEP.

Stormwater Report for Catchment: WWA1025PI in the Town of Wareham



Pilgrim Avenue

2018 Massachusetts Integrated Listed Water

Discharge directly to Broad Marsh River

MA95-49 Category 4A Estuary

Pollutants: Fecal Coliform

Pipe:

SNEP Project: Yes

Urbanized: Yes

Sewered: Yes

Inventory Date

No Flow Observations

Rating by Weather (0-5):

Wet :

Dry :



Recommendation:

DW: No flow, no issues. WW: (1 sample) Rank: Bact (1), N/Surf (1 ea). Total 4. Recommend: Continue WW monitoring. BMR Impair: Bact.

MS4 Ranking:

Status:



Status and Recommendation based on the opinion of the BBNEP.

Stormwater Report for Catchment: WWA1030PI in the Town of Wareham



Worrall Ave at beach

2018 Massachusetts Integrated Listed Water

Discharge directly to Wareham River

MA95-03 Catagory 5 Estuary

Pollutants: Estuarine Bioassessments, Nitrogen (Total), Fecal Coliform

Pipe:

SNEP Project: No

Urbanized: Yes

Sewered:

Inventory Date

No Flow Observations

Rating by Weather (0-5):

Wet :

Dry :

Recommndation:

MS4 Ranking:

Status:



WWA1030PI



Status and Recommendation based on the opinion of the BBNEP.

Field Results

SampleID	SampleDate	FacilityID	SampleType	Last Rain	48hr Rain	Sensory	pH	Temp.	Salinity	Ammonia	Chlorine	Nitrate	Surfactants
2WA06SEP06-A	9/6/2022	WWA1210CB	sump	0 hrs	1.75 in	none	6.96	21.2 C	0.01 ppt	0.25 ppm	18 ppb	0.88 ppm	0.25 ppm

Certified Laboratory Results

SampleID	Entero.	Fecal C.	E. coli	Kjeldhal N	Ammonia N	Nitrate N	Nitrite N	Total N	Total P	TSS	DO	BOD
2WA06SEP06-A		1000		BRL		0.51 mg/L	BRL	NEP Calc 0.51 mg/L				

Stormwater Report for Catchment: WWA1038RC in the Town of Wareham



Parkwood Dr between Teakwood Ave and Ash St

2018 Massachusetts Integrated Listed Water

Discharge directly to Wareham River

MA95-03 Category 5 Estuary

Pollutants: Estuarine Bioassessments, Nitrogen (Total), Fecal Coliform

Pipe:

SNEP Project:

Urbanized:

Sewered:

Inventory Date

No Flow Observations

Rating by Weather (0-5):

Wet :

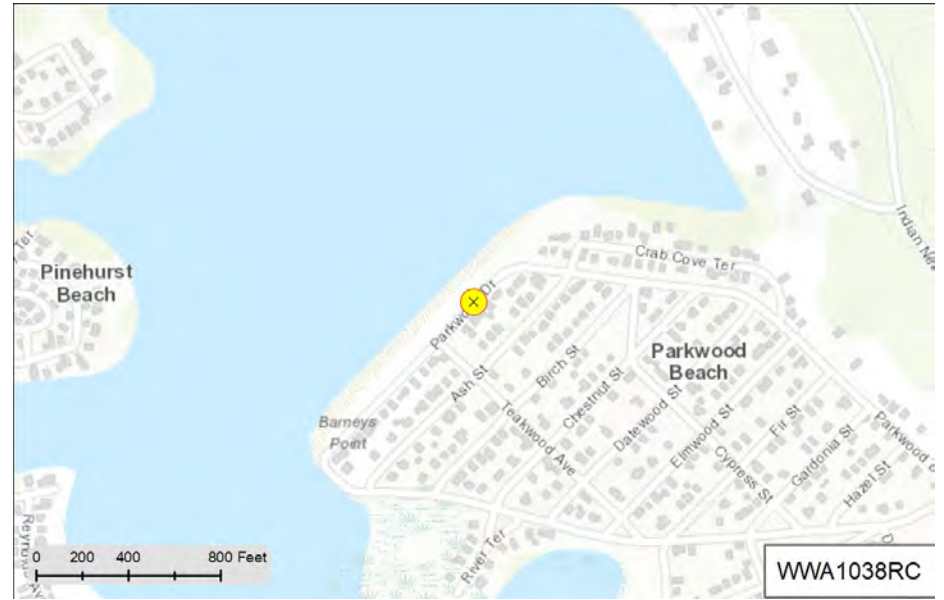
Dry :

Recommendation:

No monitoring results for DW or WW. Recommend: Monitor for DW and WW. Warh R Impair: Bact and N

MS4 Ranking:

Status:



Status and Recommendation based on the opinion of the BBNEP.

Stormwater Report for Catchment: WWA1040PI in the Town of Wareham



Edgewater Dr

2018 Massachusetts Integrated Listed Water

Discharge directly to Crooked River

MA95-51 Category 4A Estuary

Pollutants: Enterococcus, Fecal Coliform

Pipe:

SNEP Project: Yes

Urbanized: Yes

Sewered: Yes

Inventory Date

No Flow Observations

Rating by Weather (0-5):
Wet :
Dry :

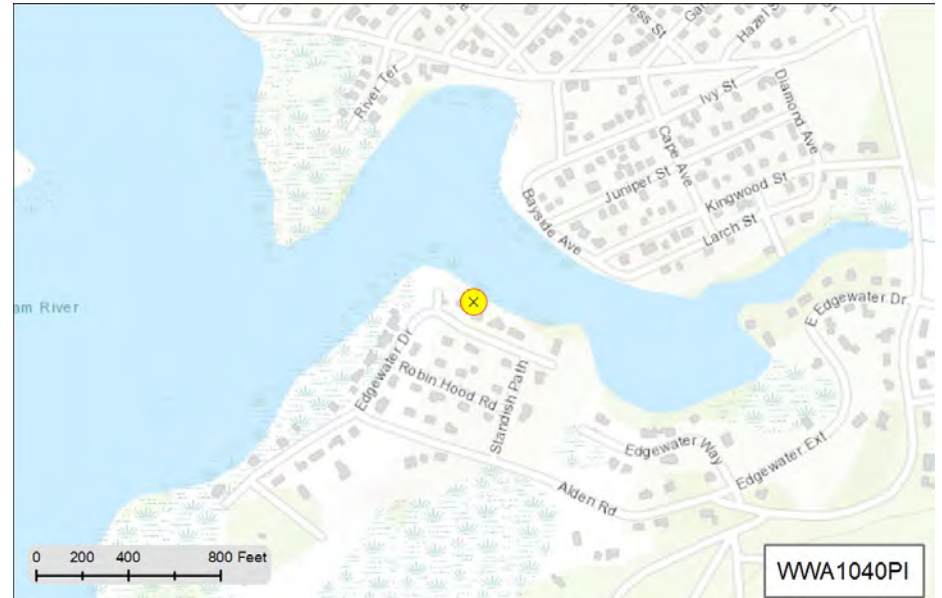


Recommendation:

DW: No flow, no issues. No monitoring results for WW. Monitor for WW. Crkd R Impair: Bact.

MS4 Ranking:

Status:



Status and Recommendation based on the opinion of the BBNEP.

**Stormwater Report for Catchment: WWA1043PI
in the Town of Wareham**



Bayside Ave at address 20

2018 Massachusetts Integrated Listed Water

Discharge directly to Crooked River

MA95-51 Catagory 4A Estuary

Pollutants: Enterococcus, Fecal Coliform

Pipe:

SNEP Project: Yes

Urbanized: Yes

Sewered: Yes

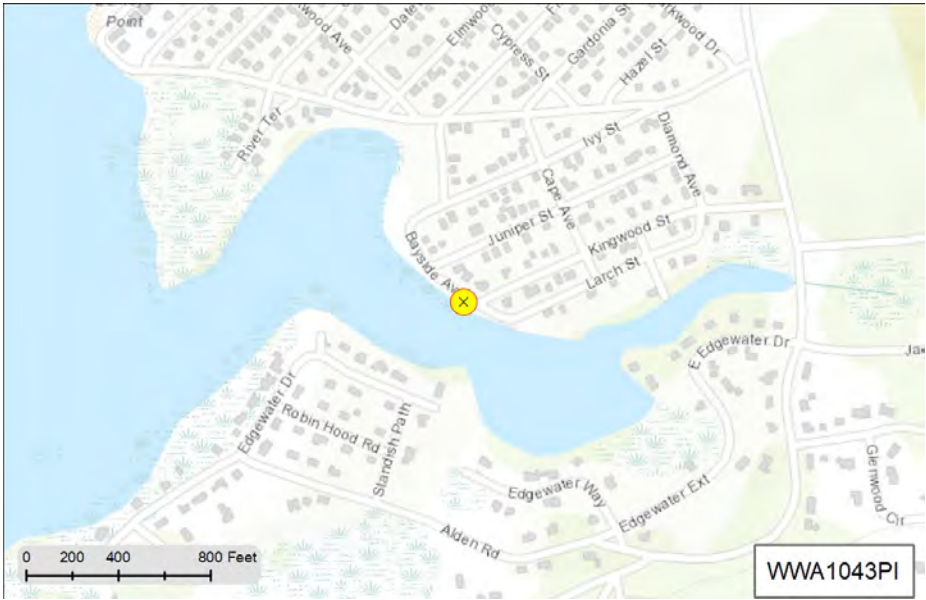
Inventory Date

No Flow Observations

Rating by Weather (0-5):

Wet :

Dry :



Recommendation:

DW: No flow, no issues. No monitoring results for WW.
Recommend: Monitor for WW. Crkd R Impair: Bact.

MS4 Ranking:

Status:

Status and Recommendation based on the opinion of the BBNEP.

Stormwater Report for Catchment: WWA1043RC in the Town of Wareham



Parkwood Dr between Teakwood Ave and Ash St, near bend

2018 Massachusetts Integrated Listed Water

Discharge directly to Wareham River

MA95-03 Category 5 Estuary

Pollutants: Estuarine Bioassessments, Nitrogen (Total), Fecal Coliform

Pipe: Road cut

SNEP Project: Yes

Urbanized: Yes

Sewered: Yes

Inventory Date

No Flow Observations

Rating by Weather (0-5):

Wet :

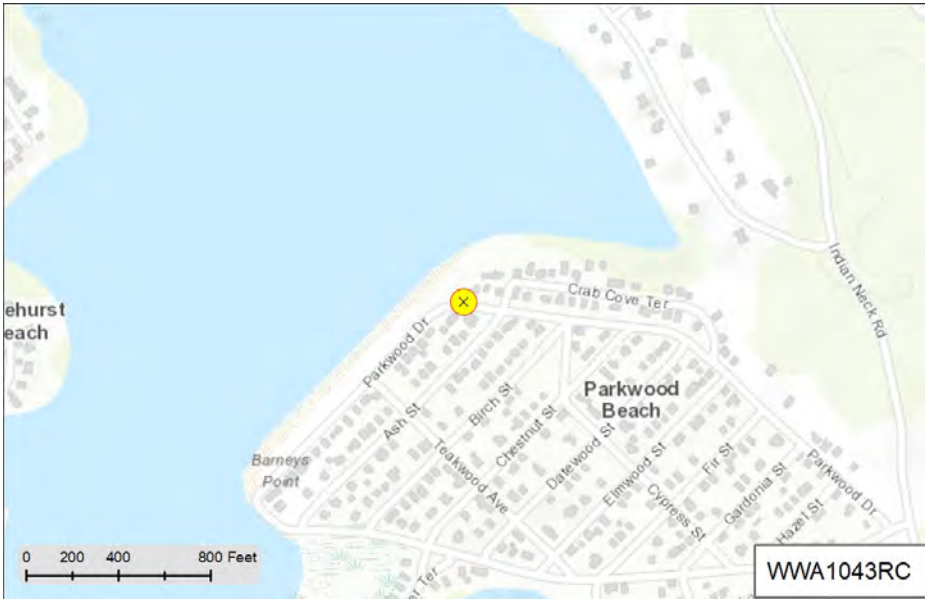
Dry :

Recommendation:

No DW samples, only one WW sample collected. WW had very high Bact. counts. WW Rank: Bact (2), Nitrates (1), Total 3. Recommend: Monitor for both DW and WW. Investigate for potential ID. Warh R Impair: Bact and N

MS4 Ranking:

Status:



Status and Recommendation based on the opinion of the BBNEP.

Stormwater Report for Catchment: WWA1044RC in the Town of Wareham



Crab Cove Terrace and Ash St

2018 Massachusetts Integrated Listed Water

Discharge directly to Wareham River

MA95-03 Category 5 Estuary

Pollutants: Estuarine Bioassessments, Nitrogen (Total), Fecal Coliform

Pipe: Road cut

SNEP Project: Yes

Urbanized: Yes

Sewered: Yes

Inventory Date

No Flow Observations

Rating by Weather (0-5):

Wet :

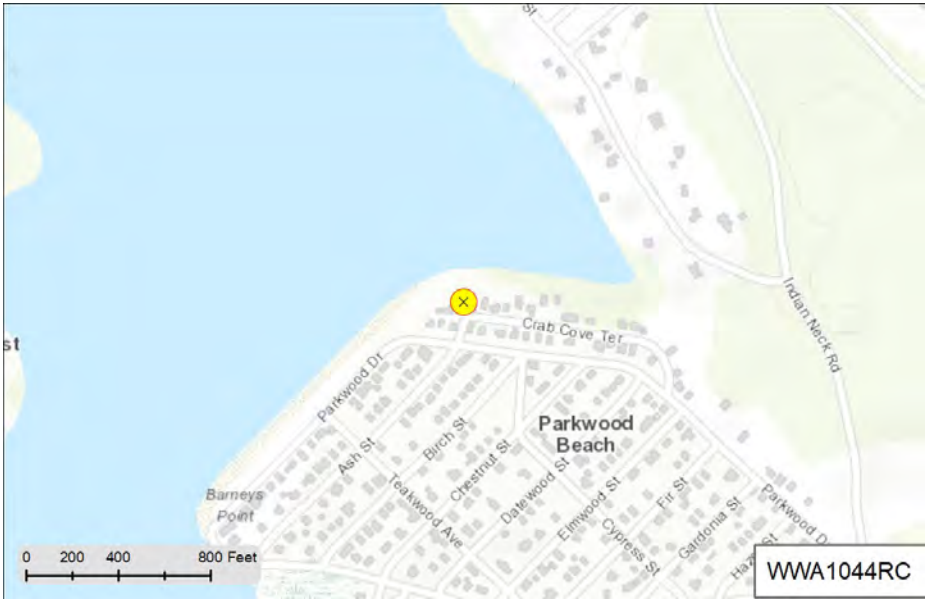
Dry :

Recommendation:

No monitoring results for DW or WW. Recommend: Monitor for DW and WW. Warh R Impair: Bact and N.

MS4 Ranking:

Status:



Status and Recommendation based on the opinion of the BBNEP.

Stormwater Report for Catchment: WWA1048PI in the Town of Wareham



Parkwood Drive

2018 Massachusetts Integrated Listed Water

Discharge directly to Wareham River

MA95-03 Category 5 Estuary

Pollutants: Estuarine Bioassessments, Nitrogen (Total), Fecal Coliform

Pipe: Circular 10 inch Corrugated Metal

SNEP Project: Yes

Urbanized: Yes

Sewered: Yes

Inventory Date: 4/13/2016

4 No Flow Observations

Rating by Weather (0-5):

Wet:

Dry: No Data or No Flow

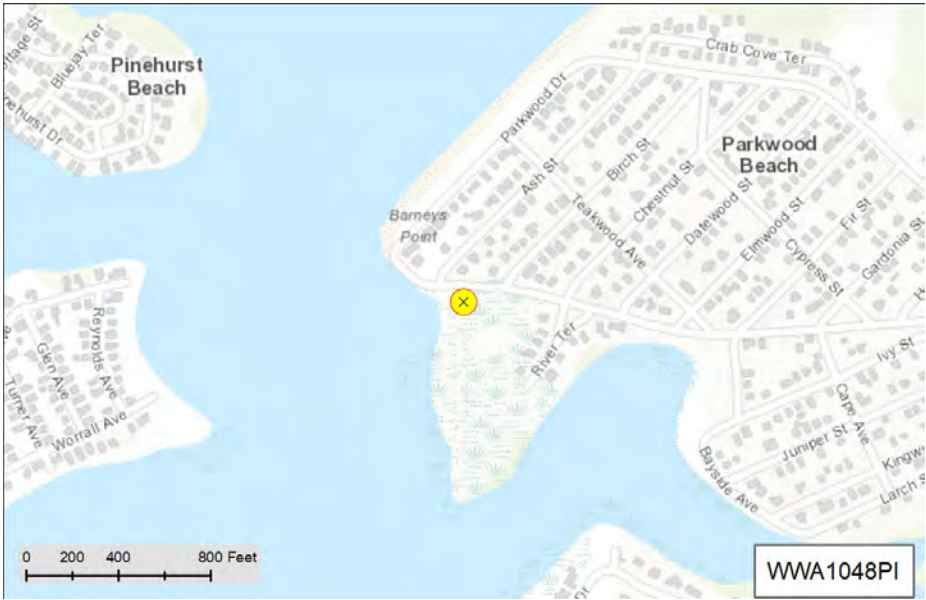


Recommendation:

DW: no flow, no issues. WW: no samples collected. Recommend: Monitor for WW. Warh R Impair: Bact and N.

MS4 Ranking: High Priority Outfall

Status: Evaluation Not Complete



Status and Recommendation based on the opinion of the BBNEP.

Stormwater Report for Catchment: WWA1054PI in the Town of Wareham



Parkwood Drive

2018 Massachusetts Integrated Listed Water

Discharge to tributary of Wareham River

MA95-03 Category 5 Estuary

Pollutants: Estuarine Bioassessments, Nitrogen (Total), Fecal Coliform

Pipe:

SNEP Project: Yes

Urbanized: Yes

Sewered: Yes

Inventory Date

No Flow Observations

Rating by Weather (0-5):

Wet :

Dry :

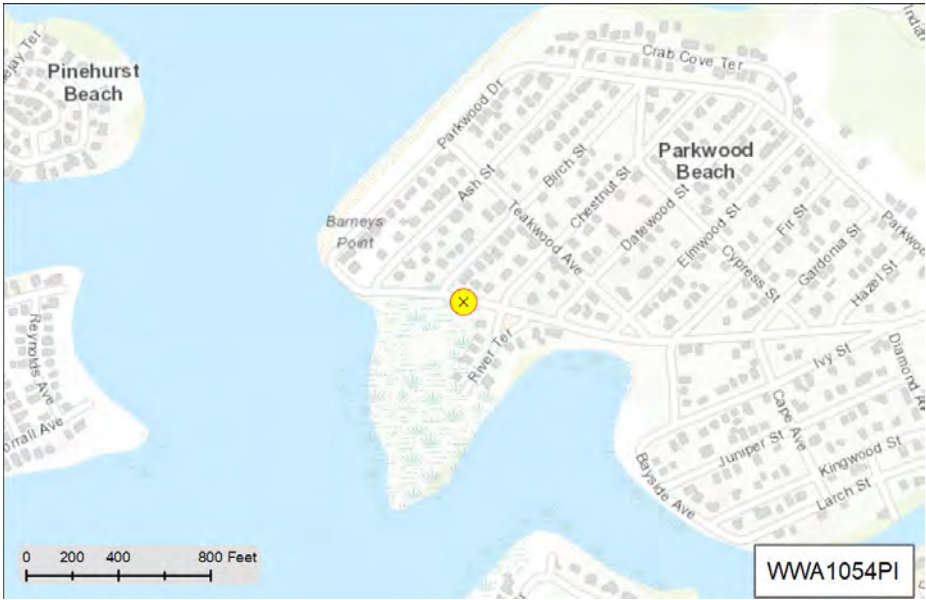


Recommendation:

DW: no flow, no issues. WW Rank (1 sample): Bact (2), Amm/Nitrates/Surf (1 ea). Total 5. Recommend: Continue monitoring for WW and begin ID investigation. Warh R Impair: Bact and N.

MS4 Ranking:

Status:



Status and Recommendation based on the opinion of the BBNEP.

Stormwater Report for Catchment: WWA1058PI in the Town of Wareham



Parkwood Drive

2018 Massachusetts Integrated Listed Water

Discharge directly to Crooked River

MA95-51 Catagory 4A Estuary

Pollutants: Enterococcus, Fecal Coliform

Pipe: Circular 10 inch HDPE

SNEP Project: Yes

Urbanized: Yes

Sewered: Yes

Inventory Date

No Flow Observations

Rating by Weather (0-5):

Wet :

Dry :

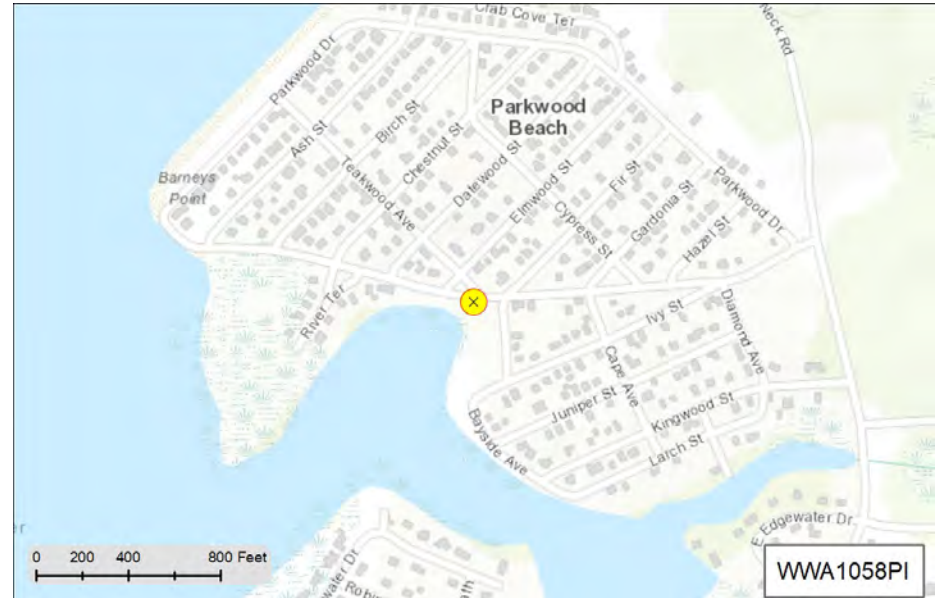


Recommendation:

Recommend: Continue monitoring WWA2533CB for DW and WW. If DW is in sump, take a sample only if the sump does not appear to be stagnant. Make note on data sheet if sump was stagnant or flowing. DW and WW: check salinity first if 5.5 or less monitor. If > 5.5 for WW monitor next upstream inline structure (confirm drainage connectivity onsite). Crkd R Impair: Bact.

MS4 Ranking:

Status:



Status and Recommendation based on the opinion of the BBNEP.

**Stormwater Report for Catchment: WWA1059PI
in the Town of Wareham**



Cottage Street

2018 Massachusetts Integrated Listed Water

Discharge directly to Wareham River

MA95-03 Catagory 5 Estuary

Pollutants: Estuarine Bioassessments, Nitrogen (Total), Fecal Coliform

Pipe:

SNEP Project:

Urbanized:

Sewered:

Inventory Date

No Flow Observations

Rating by Weather (0-5):

Wet :

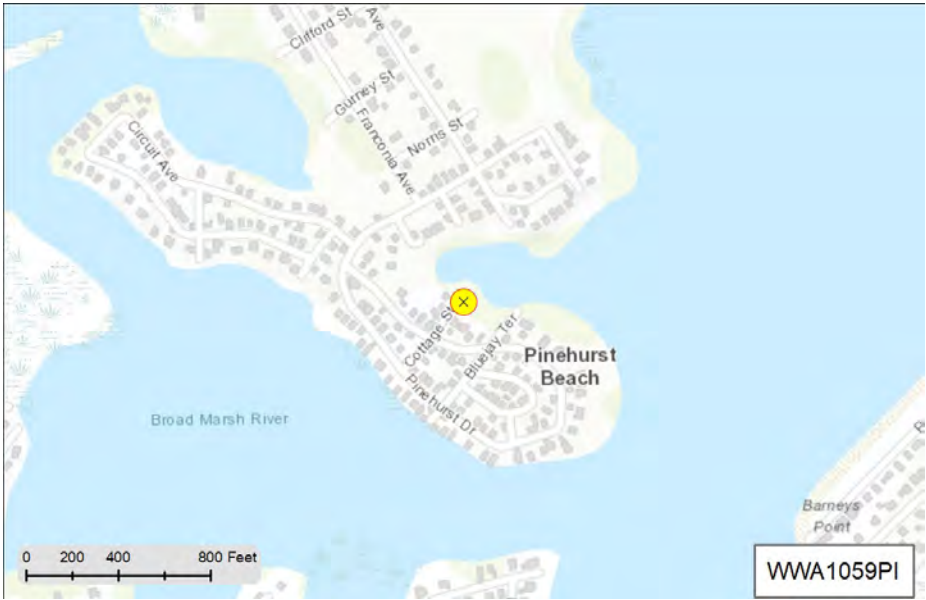
Dry :

Recommndation:

DW: only 1 sample collected, no samples for WW. Recommend:
Continue to monitor DW and WW. BMR Impair: Bact.

MS4 Ranking:

Status:



Status and Recommendation based on the opinion of the BBNEP.

Stormwater Report for Catchment: WWA1061PI in the Town of Wareham



Larch Avenue

2018 Massachusetts Integrated Listed Water

Discharge directly to Crooked River

MA95-51 Catagory 4A Estuary

Pollutants: Enterococcus, Fecal Coliform

Pipe:

SNEP Project: Yes

Urbanized: Yes

Sewered: Yes

Inventory Date

No Flow Observations

Rating by Weather (0-5):

Wet :

Dry :

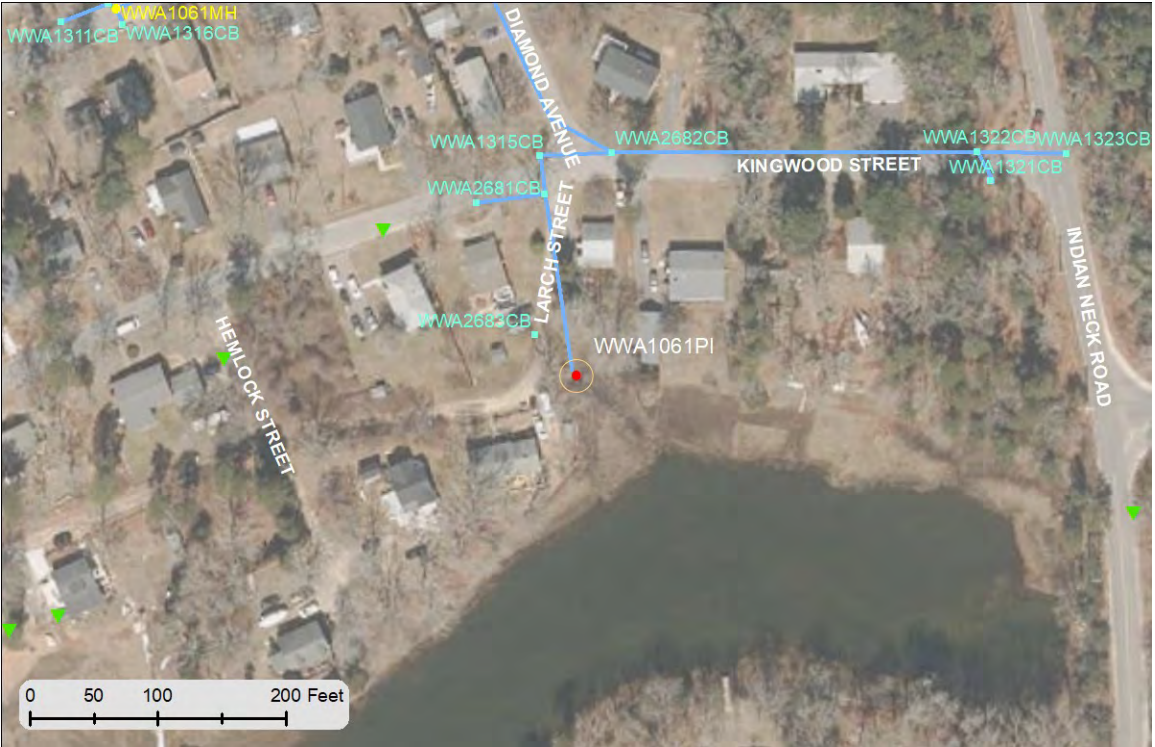


Recommndation:

DW: no flow, no issues. WW Rank (1 sample): Bact (2) and Nitrates (1), Total 3. Recommend: Continue sampling WW and begin ID investigation (bacteria). Crkd R Impair: Bact.

MS4 Ranking:

Status:



Status and Recommendation based on the opinion of the BBNEP.

Stormwater Report for Catchment: WWA1067PI in the Town of Wareham



Sea Street

2018 Massachusetts Integrated Listed Water

Discharge directly to Wareham River

MA95-03 Catagory 5 Estuary

Pollutants: Estuarine Bioassessments, Nitrogen (Total), Fecal Coliform

Pipe:

SNEP Project: Yes

Urbanized: Yes

Sewered: Yes

Inventory Date

No Flow Observations

Rating by Weather (0-5):

Wet :

Dry :



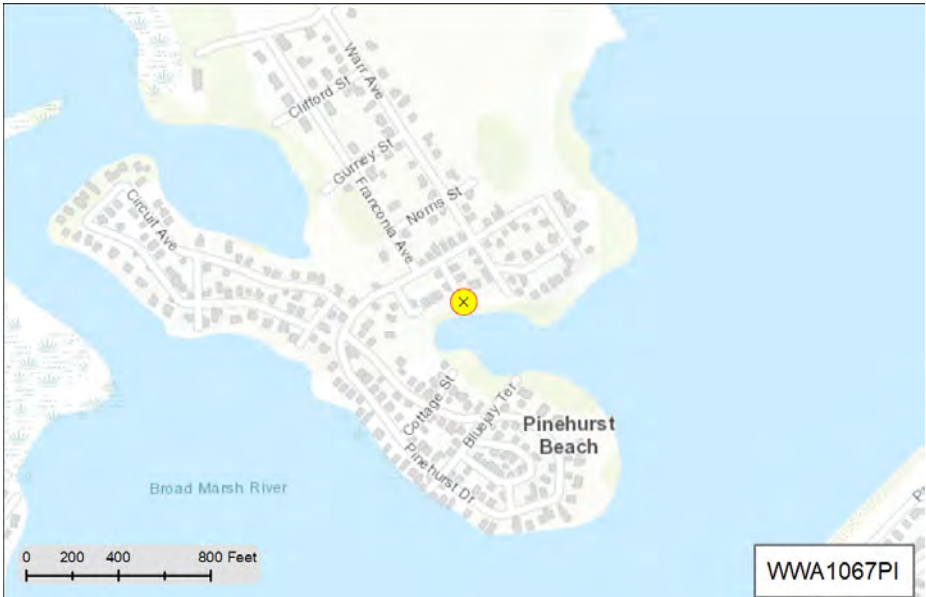
Recommndation:

DW: no flow, no issues. WW: no samples collected.

Recommend:Monitor WW. Warh R impair: Bact and N.

MS4 Ranking:

Status:



Status and Recommendation based on the opinion of the BBNEP.

Stormwater Report for Catchment: WWA1070PI in the Town of Wareham



Warr Avenue

2018 Massachusetts Integrated Listed Water

Discharge directly to Wareham River

MA95-03 Catagory 5 Estuary

Pollutants: Estuarine Bioassessments, Nitrogen (Total), Fecal Coliform

Pipe: 12 inch Concrete

SNEP Project: Yes

Urbanized: Yes

Sewered: Yes

Inventory Date 4/4/2016

2 No Flow Observations

Rating by Weather (0-5):

Wet : 2

Dry : No Data or No Flow

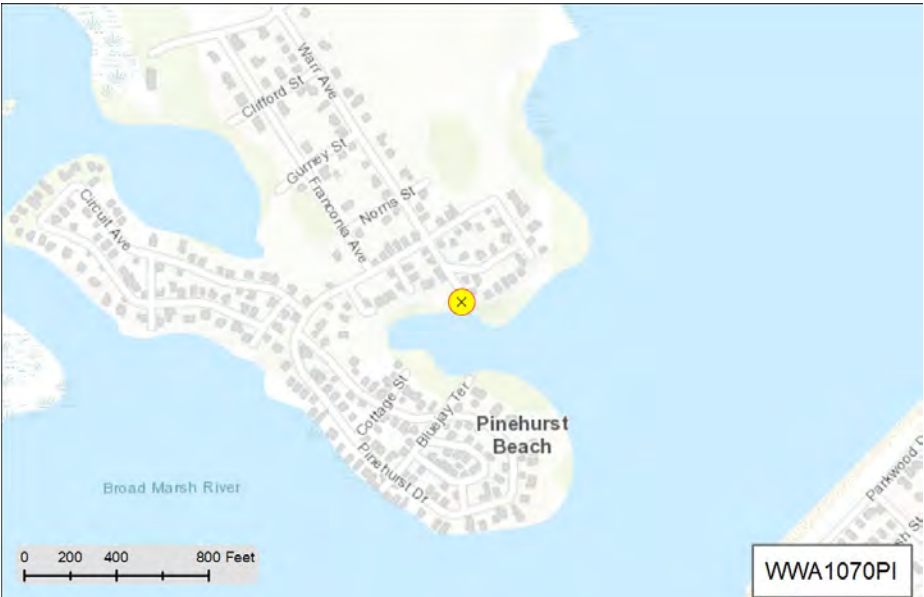


Recommnedation:

DW: no flow, no issues. WW: no samples collected. Recommend: Monitor WW. Warh R Impair: Bact and N.

MS4 Ranking: High Priority Outfall

Status: Evaluation Not Complete



Status and Recommendation based on the opinion of the BBNEP.

**Stormwater Report for Catchment: WWA1071PI
in the Town of Wareham**



Parkwood Ave

2018 Massachusetts Integrated Listed Water

Discharge directly to Wareham River

MA95-03 Catagory 5 Estuary

Pollutants: Estuarine Bioassessments, Nitrogen (Total), Fecal Coliform

Pipe: Circular 12 inch Concrete

SNEP Project: Yes

Urbanized: Yes

Sewered: Yes

Inventory Date

No Flow Observations

Rating by Weather (0-5):

Wet :

Dry :

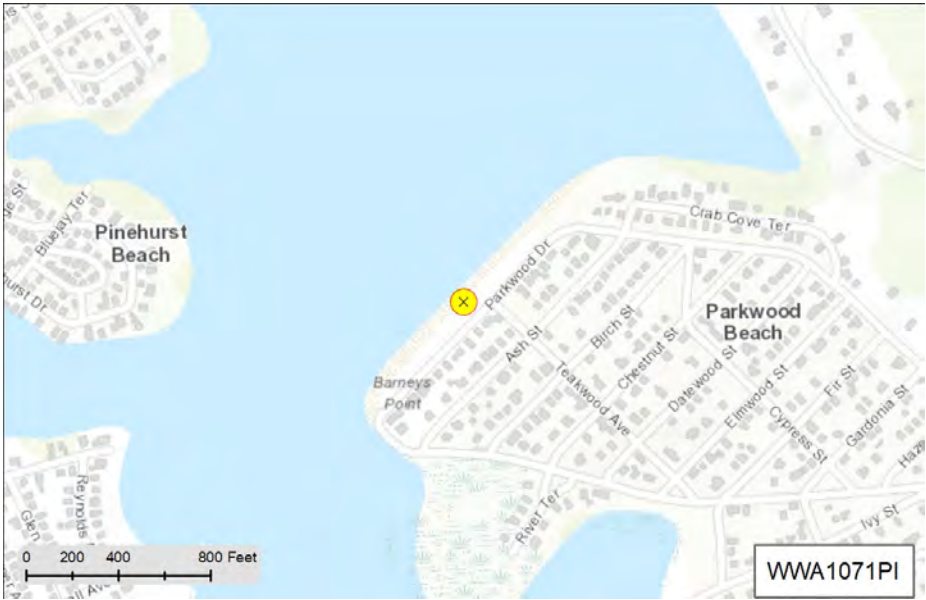


Recommnedation:

DW: no flow, no issues. WW: no samples collected. Recommend: Monitor WW. Warh R Impair: Bact and N.

MS4 Ranking:

Status:



Status and Recommendation based on the opinion of the BBNEP.

Stormwater Report for Catchment: WWA1082PI in the Town of Wareham



Crab Cove Terrace

2018 Massachusetts Integrated Listed Water

Discharge directly to Wareham River

MA95-03 Catagory 5 Estuary

Pollutants: Estuarine Bioassessments, Nitrogen (Total), Fecal Coliform

Pipe:

SNEP Project:

Urbanized:

Sewered:

Inventory Date

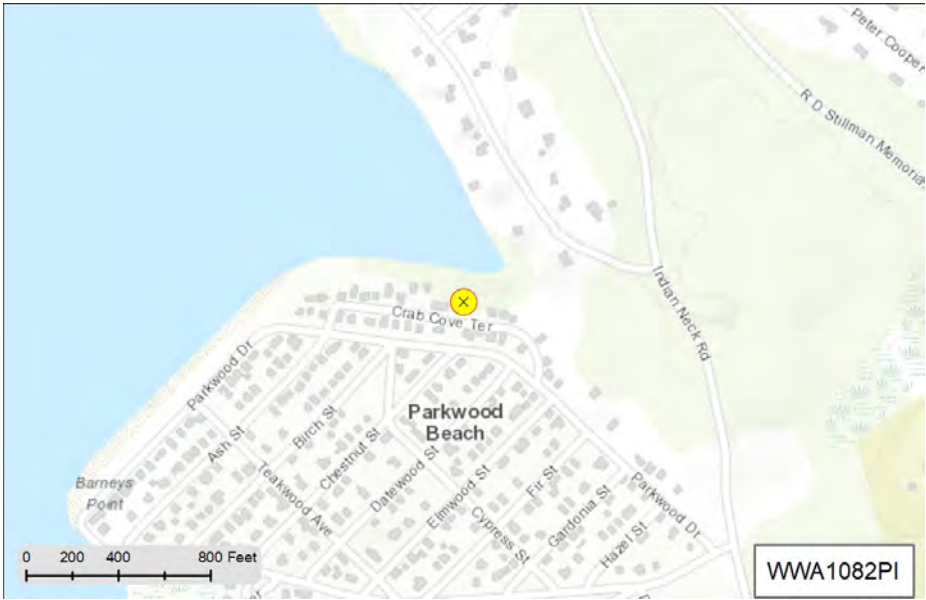
No Flow Observations

Rating by Weather (0-5):
Wet :
Dry :

Recommndation:
DW: no flow, no issues. WW: no samples collected. Recommend:
Monitor WW. Warh R Impair: Bact and N.

MS4 Ranking:

Status:



Status and Recommendation based on the opinion of the BBNEP.

Stormwater Report for Catchment: WWA1091PI in the Town of Wareham



Viking Drive

2018 Massachusetts Integrated Listed Water

Discharge directly to Broad Marsh River

MA95-49 Catagory 4A Estuary

Pollutants: Fecal Coliform

Pipe:

SNEP Project: Yes

Urbanized: Yes

Sewered: Yes

Inventory Date

No Flow Observations

Rating by Weather (0-5):

Wet :

Dry :

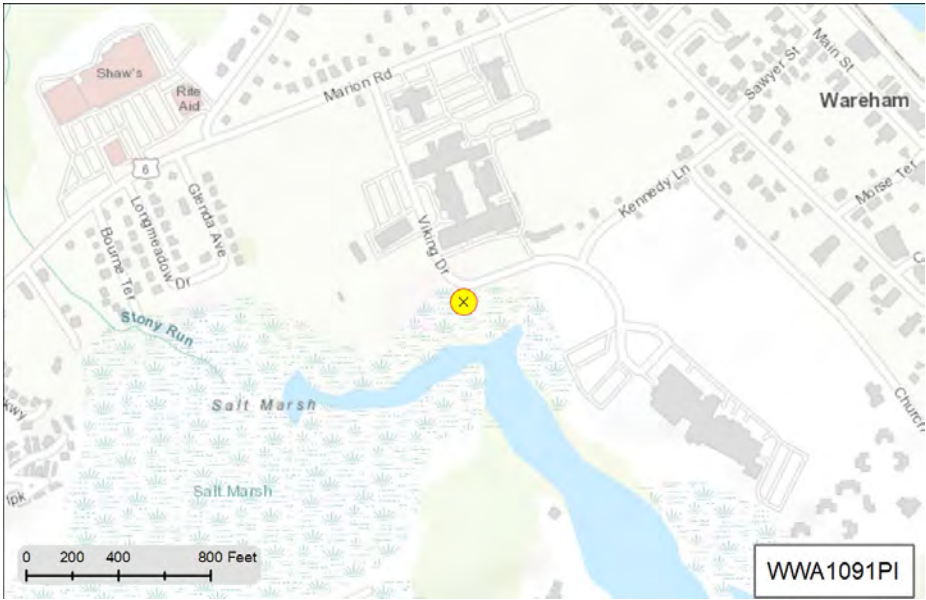


Recommnedation:

DW: No flow, no issues. WW: Moderate Bact levels. WW Rank: Bact (1), Total 1. Some of this drainage is treated with an infiltration structures (around municipal complex). Recommend: Check functioning status of exting structures during a rain. Clean out as needed. Install additional management practices for treating bacteria if needed. BMR Impair: Bact.

MS4 Ranking:

Status:



Status and Recommendation based on the opinion of the BBNEP.

Stormwater Report for Catchment: WWA1092PI in the Town of Wareham



Viking Drive

2018 Massachusetts Integrated Listed Water

Discharge directly to Broad Marsh River

MA95-49 Catagory 4A Estuary

Pollutants: Fecal Coliform

Pipe:

SNEP Project: Yes

Urbanized: Yes

Sewered: Yes

Inventory Date

No Flow Observations

Rating by Weather (0-5):

Wet :

Dry :

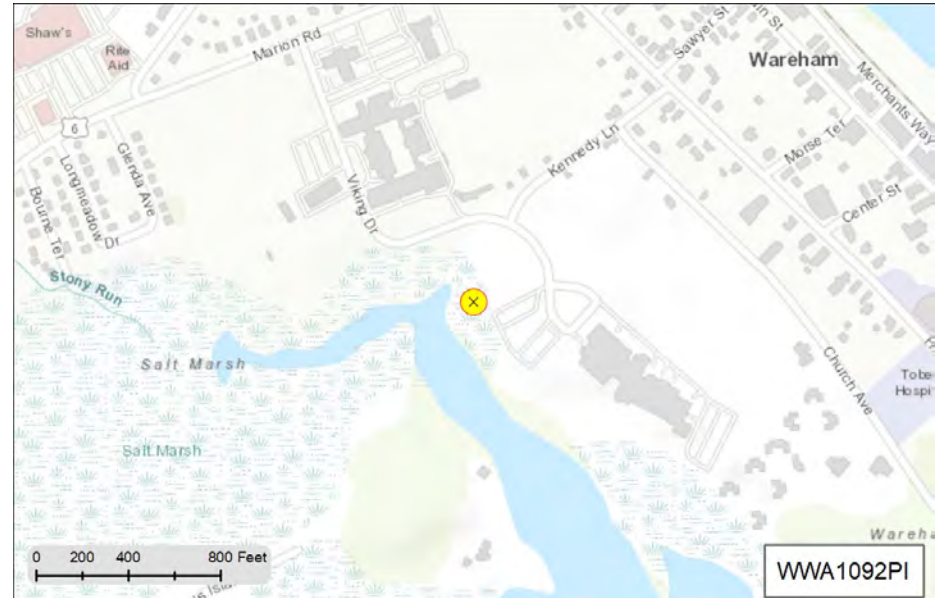


Recommendation:

DW: No flow, no issues. WW: Moderate Bact levels. WW Rank: Bact (1), Total 1. Recommend: Continue WW monitoring. BMR Impair: Bact.

MS4 Ranking:

Status:



Status and Recommendation based on the opinion of the BBNEP.

Stormwater Report for Catchment: WWA1095PI in the Town of Wareham



Viking Drive

2018 Massachusetts Integrated Listed Water

Discharge directly to Broad Marsh River

MA95-49 Catagory 4A Estuary

Pollutants: Fecal Coliform

Pipe: 15 inch HDPE

SNEP Project: Yes

Urbanized: Yes

Sewered: Yes

Inventory Date 4/19/2016

5 No Flow Observations

Rating by Weather (0-5):

Wet :

Dry :

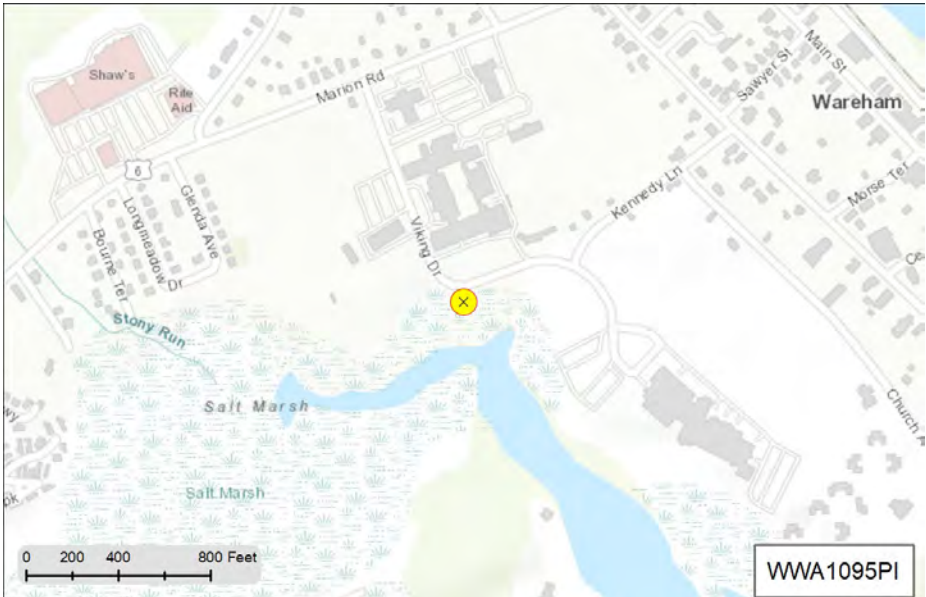


Recommnedation:

DW: No flow, no issues. WW: Moderate Bact levels. WW Rank: Bact (1), Total 1. Some of this drainage is treated with an infiltration structures (around municipal complex). Recommend: Check functioning status of exting structures during a rain. Clean out as needed. Install additional management practices for treating bacteria if needed. BMR Impair: Bact.

MS4 Ranking: High Priority Outfall

Status: Some Concern Warranted - Consider Corrective Action



Status and Recommendation based on the opinion of the BBNEP.

Stormwater Report for Catchment: WWA1102PI in the Town of Wareham



Oak Street

2018 Massachusetts Integrated Listed Water

Discharge directly to Wareham River

MA95-03 Category 5 Estuary

Pollutants: Estuarine Bioassessments, Nitrogen (Total), Fecal Coliform

Pipe: Circular 12 inch Corrugated Metal

SNEP Project: Yes

Urbanized: Yes

Sewered: Yes

Inventory Date: 4/13/2016

8 No Flow Observations

Rating by Weather (0-5):

Wet:

Dry:



Recommendation:

DW: No flow, no issues. WW: High Bact levels. WW Rank (1 sample): Bact (2), Total 2. Recommend: Continue WW monitoring. Install management practices for treating bacteria. Warh R Impair: Bact and N.

MS4 Ranking: High Priority Outfall

Status: Evaluation Not Complete



Status and Recommendation based on the opinion of the BBNEP.

Stormwater Report for Catchment: WWA1103PI in the Town of Wareham



Warr Ave and Main Street

2018 Massachusetts Integrated Listed Water

Discharge directly to Wareham River

MA95-03 Category 5 Estuary

Pollutants: Estuarine Bioassessments, Nitrogen (Total), Fecal Coliform

Pipe:

SNEP Project:

Urbanized:

Sewered:

Inventory Date

No Flow Observations

Rating by Weather (0-5):

Wet :

Dry :

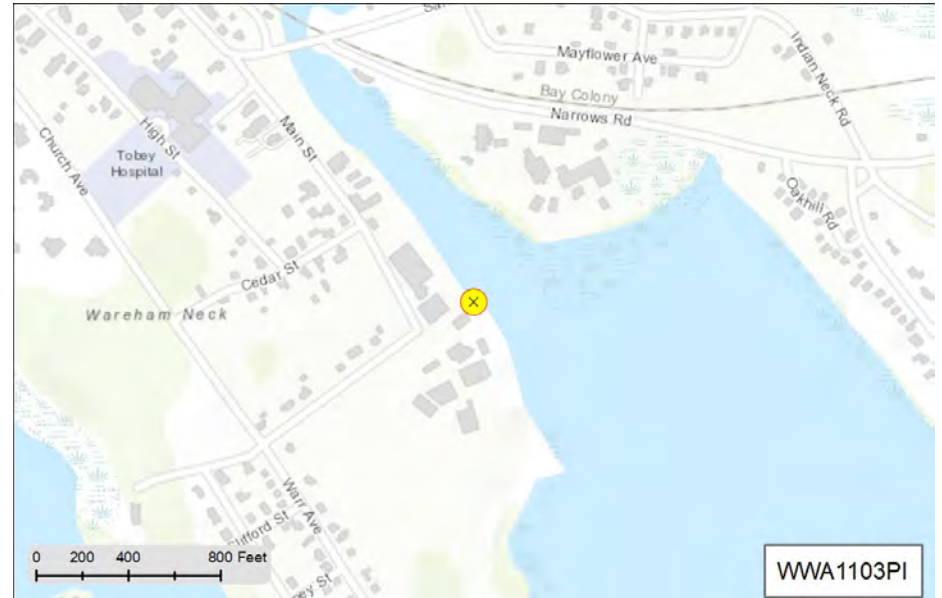


Recommendation:

DW: No flow, no issues. Although the samples from this CB were in the sump, there is concern of the high counts of bact, even with a small amount or rain or 24 hours after a rain. Recommend: Continue WW monitoring of WWA1443CB. If sample is in sump, make a note in data sheets regarding flow status (flowing, stagnant). Investigate for possible ID. Warh R Impair: Bact and N.

MS4 Ranking:

Status:



Stormwater Report for Catchment: WWA1114PI in the Town of Wareham



Main Street

2018 Massachusetts Integrated Listed Water
 Discharge directly to Wareham River
 MA95-03 Catagory 5 Estuary
 Pollutants: Estuarine Bioassessments, Nitrogen (Total), Fecal Coliform

Pipe:

SNEP Project: Yes

Urbanized: Yes

Sewered: Yes

Inventory Date

No Flow Observations

Rating by Weather (0-5):

Wet :

Dry :

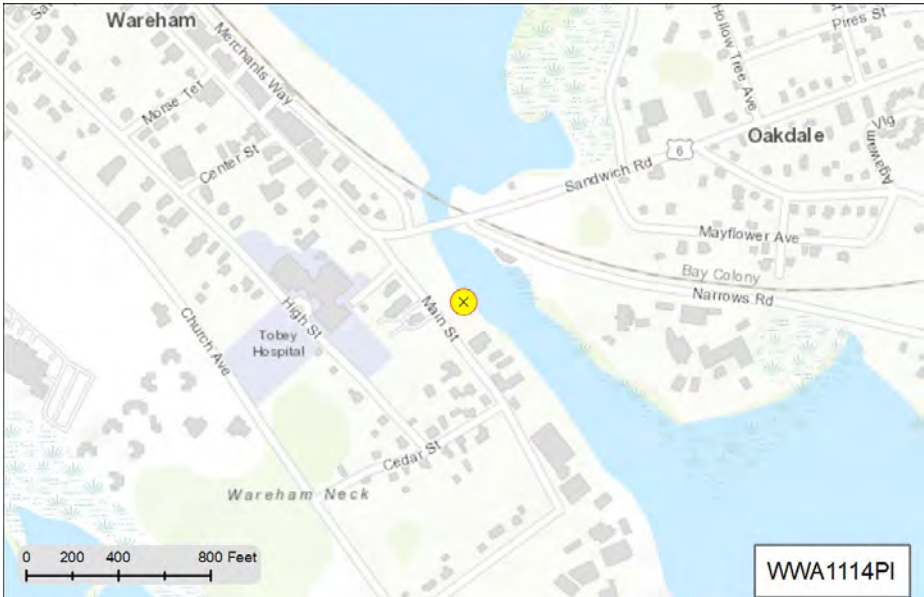


Recommnedation:

DW: No flow, no issues. WW Rank (2 samples): Bact (2), Nitrates/Surf (1 ea), Total 4. Recommend: Investigate for possible ID and construct a management practice for bacteria treatment. Warh R Impair: Bact and N.

MS4 Ranking:

Status:



Status and Recommendation based on the opinion of the BBNEP.

Stormwater Report for Catchment: WWA1115PI in the Town of Wareham



Narrows Road

2018 Massachusetts Integrated Listed Water

Discharge directly to Wareham River

MA95-03 Category 5 Estuary

Pollutants: Estuarine Bioassessments, Nitrogen (Total), Fecal Coliform

Pipe:

SNEP Project: Yes

Urbanized: Yes

Sewered: Yes

Inventory Date

No Flow Observations

Rating by Weather (0-5):

Wet :

Dry :



Recommendation:

DW: No flow, no issues. WW Rank (1 sample): Bact (2), Nitrates/Surf (1 ea), Total 4. Recommend: Continue WW monitoring, Investigate for possible ID and construct a management practice for bacteria treatment. Warh R Impair: Bact and N.

MS4 Ranking:

Status:



Status and Recommendation based on the opinion of the BBNEP.

Stormwater Report for Catchment: WWA1117PI in the Town of Wareham



Merchants Way

2018 Massachusetts Integrated Listed Water

Discharge directly to Agawam River

MA95-29 Catagory 5 Estuary

Pollutants: Algae, Nitrogen (Total), Fecal Coliform

Pipe:

SNEP Project:

Urbanized:

Sewered:

Inventory Date

No Flow Observations

Rating by Weather (0-5):

Wet :

Dry :



Recommnedation:

MS4 Ranking:

Status:



Status and Recommendation based on the opinion of the BBNEP.

Stormwater Report for Catchment: WWA1121PI in the Town of Wareham



Merchants Way

2018 Massachusetts Integrated Listed Water

Discharge directly to Agawam River

MA95-29 Category 5 Estuary

Pollutants: Algae, Nitrogen (Total), Fecal Coliform

Pipe:

SNEP Project:

Urbanized:

Sewered:

Inventory Date

No Flow Observations

Rating by Weather (0-5):

Wet :

Dry :



Recommendation:

MS4 Ranking:

Status:



Status and Recommendation based on the opinion of the BBNEP.

Field Results

SampleID	SampleDate	FacilityID	SampleType	Last Rain	48hr Rain	Sensory	pH	Temp.	Salinity	Ammonia	Chlorine	Nitrate	Surfactants
2WA17AUG01-A	8/17/2022	WWA1121PI	pipe	8 hrs	0.03 in	Color	7.53	23.7 C	0.15 ppt	0.25 ppm	6 ppb	0.88 ppm	3 ppm

Certified Laboratory Results

SampleID	Entero.	Fecal C.	E. coli	Kjeldhal N	Ammonia N	Nitrate N	Nitrite N	Total N	Total P	TSS	DO	BOD
2WA17AUG01-A		< 1000		BRL		0.88 mg/L	BRL	NEP Calc 0.88 mg/L				

Stormwater Report for Catchment: WWA1122PI in the Town of Wareham



Merchants Way

2018 Massachusetts Integrated Listed Water

Discharge directly to Wankinco River

MA95-50 Catagory 4A Estuary

Pollutants: Fecal Coliform

Pipe:

SNEP Project:

Urbanized:

Sewered:

Inventory Date

No Flow Observations



Rating by Weather (0-5):

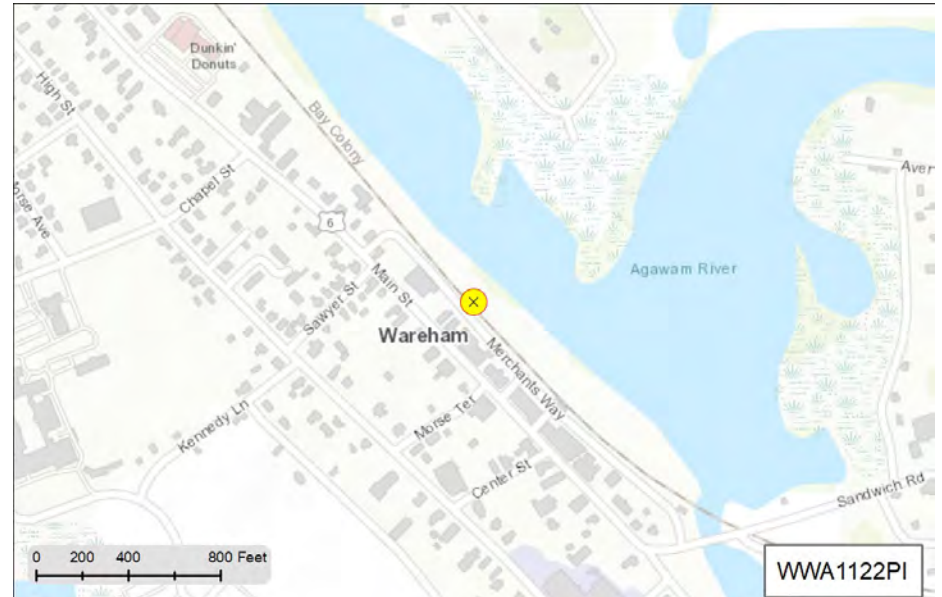
Wet :

Dry :

Recommnedation:

MS4 Ranking:

Status:



Status and Recommendation based on the opinion of the BBNEP.

Stormwater Report for Catchment: WWA1124PI in the Town of Wareham



Mearchants Way

2018 Massachusetts Integrated Listed Water

Discharge directly to Wankinco River

MA95-50 Catagory 4A Estuary

Pollutants: Fecal Coliform

Pipe:

SNEP Project: Yes

Urbanized: Yes

Sewered: Yes

Inventory Date

No Flow Observations

Rating by Weather (0-5):
 Wet :
 Dry :



Recommndation:

DW with flows, moderate bact. Rank: Bact (1), Nitrates(1), Total 2.
 WW rank: Bact (2), Nitrates (1). Total 3. Recommend: Investigate for potential ID. Construct management practice for bacteria. Wank R Impair: Bact.

MS4 Ranking:

Status:



Status and Recommendation based on the opinion of the BBNEP.

Stormwater Report for Catchment: WWA1131PI in the Town of Wareham



Main Street

2018 Massachusetts Integrated Listed Water

Discharge directly to Wankinco River

MA95-50 Catagory 4A Estuary

Pollutants: Fecal Coliform

Pipe: Arch 36 inch Concrete

SNEP Project: Yes

Urbanized: Yes

Sewered: Yes

Inventory Date

No Flow Observations

Rating by Weather (0-5):

Wet :

Dry :



Recommndation:

DW: no flows, no issues. WW rank (1 Sample): Bact (2), Nitrates/Surf (1 ea). Total 4. Recommend: Continue WW monitoring, investigate for ID, construct management practice for bacteria. Wank R Impair: Bact.

MS4 Ranking:

Status:



Status and Recommendation based on the opinion of the BBNEP.

Stormwater Report for Catchment: WWA1159PI in the Town of Wareham



Sand Piper Terrace at house 24

2018 Massachusetts Integrated Listed Water

Discharge directly to Agawam River

MA95-29 Category 5 Estuary

Pollutants: Algae, Nitrogen (Total), Fecal Coliform

Pipe:

SNEP Project: Yes

Urbanized: Yes

Sewered: No

Inventory Date

No Flow Observations

Rating by Weather (0-5):

Wet :

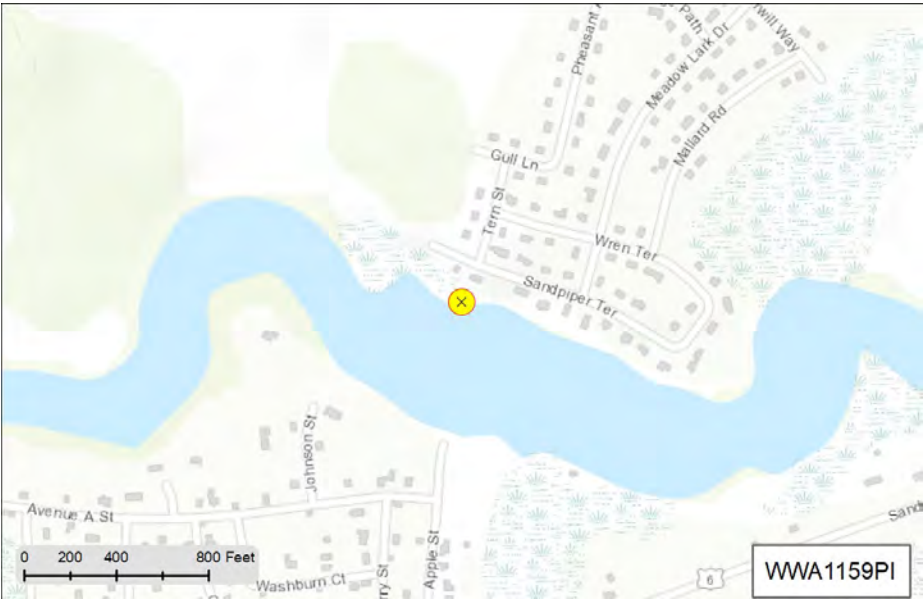
Dry :

Recommendation:

DW: no flows, no issues. WW rank (2 samples): Bact (1), Nitrates (1). Total 2. Recommend: Unless there is a change in the watershed, discontinue monitoring. Agaw R Impair: Bact.and N.

MS4 Ranking:

Status:



Status and Recommendation based on the opinion of the BBNEP.

Stormwater Report for Catchment: WWA1179PI in the Town of Wareham



Linwood Avenue

2018 Massachusetts Integrated Listed Water

Discharge directly to Agawam River

MA95-29 Category 5 Estuary

Pollutants: Algae, Nitrogen (Total), Fecal Coliform

Pipe:

SNEP Project: Yes

Urbanized: Yes

Sewered: Yes

Inventory Date

No Flow Observations

Rating by Weather (0-5):

Wet :

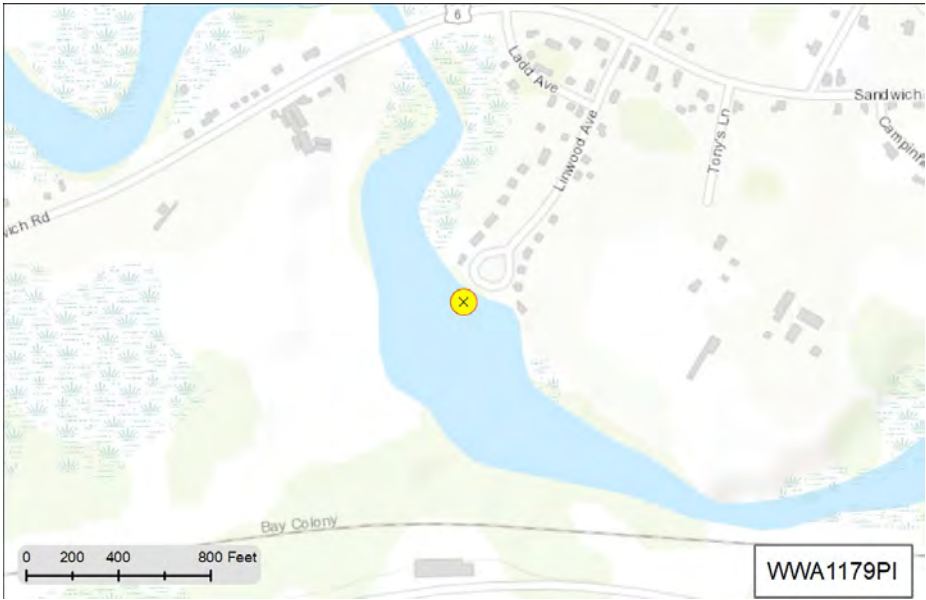
Dry :

Recommendation:

DW: No flow, no issues. WW rank (1 sample): Bact (1), Total 1.
Recommend: Continue WW monitoring. Agaw R Impair: Bact and N.

MS4 Ranking:

Status:



Status and Recommendation based on the opinion of the BBNEP.

**Stormwater Report for Catchment: WWA1349PI
in the Town of Wareham**



Worrall Avenue

2018 Massachusetts Integrated Listed Water

Discharge directly to Wareham River

MA95-03 Category 5 Estuary

Pollutants: Estuarine Bioassessments, Nitrogen (Total), Fecal Coliform

Pipe:

SNEP Project: Yes

Urbanized: Yes

Sewered: Yes

Inventory Date

No Flow Observations

Rating by Weather (0-5):

Wet :

Dry :

Recommendation:

DW: No flow, no issues. WW rank (1 sample): Bact (1), Total 1.
Recommend: Continue WW monitoring. Warh R Impair: Bact and N.

MS4 Ranking:

Status:



Status and Recommendation based on the opinion of the BBNEP.

Stormwater Report for Catchment: WWA1351PI in the Town of Wareham



Main Street

2018 Massachusetts Integrated Listed Water

Discharge directly to Wareham River

MA95-03 Category 5 Estuary

Pollutants: Estuarine Bioassessments, Nitrogen (Total), Fecal Coliform

Pipe: Circular 12 inch PVC

SNEP Project: Yes

Urbanized: Yes

Sewered: Yes

Inventory Date: 8/22/2022

0 No Flow Observations

Rating by Weather (0-5):

Wet: 5

Dry: No Data or No Flow



Recommendation:

MS4 Ranking: High Priority Outfall

Status: Evaluation Not Complete



Status and Recommendation based on the opinion of the BBNEP.

Stormwater Report for Catchment: WWA1353PI in the Town of Wareham



Bayside Avenue

2018 Massachusetts Integrated Listed Water

Discharge directly to Crooked River

MA95-51 Catagory 4A Estuary

Pollutants: Enterococcus, Fecal Coliform

Pipe:

SNEP Project: No

Urbanized: Yes

Sewered:

Inventory Date

No Flow Observations

Rating by Weather (0-5):

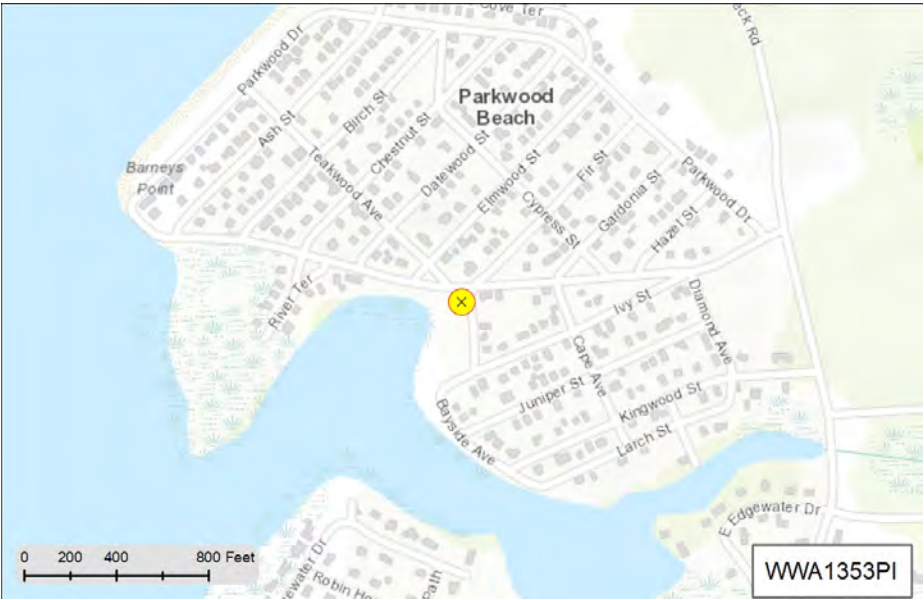
Wet :

Dry :

Recommndation:

MS4 Ranking:

Status:



Status and Recommendation based on the opinion of the BBNEP.

Stormwater Report for Catchment: WWA1354PI in the Town of Wareham



Bayside Avenue

2018 Massachusetts Integrated Listed Water

Discharge directly to Crooked River

MA95-51 Category 4A Estuary

Pollutants: Enterococcus, Fecal Coliform

Pipe:

SNEP Project: No

Urbanized: Yes

Sewered:

Inventory Date

No Flow Observations

Rating by Weather (0-5):

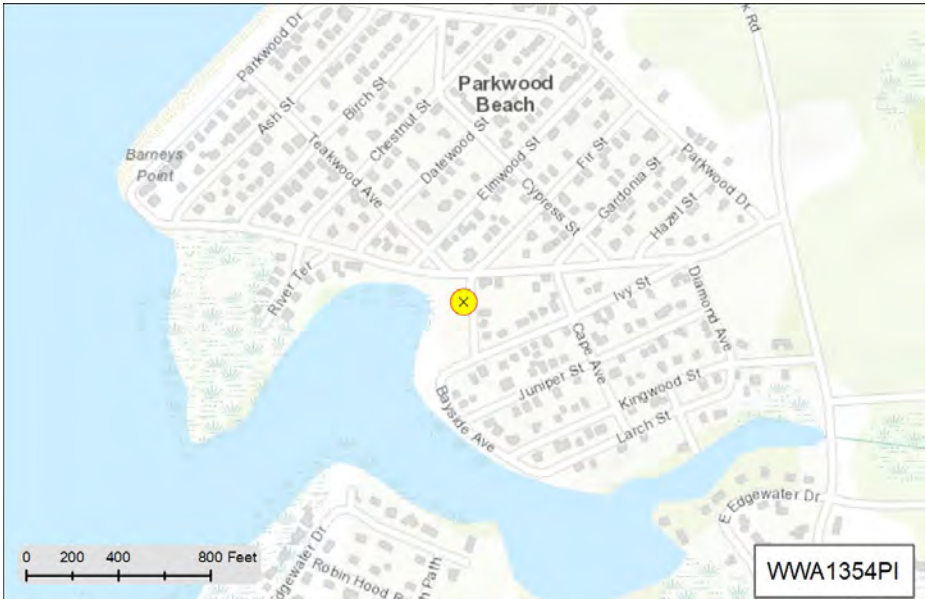
Wet :

Dry :

Recommendation:

MS4 Ranking:

Status:



Status and Recommendation based on the opinion of the BBNEP.

Stormwater Report for Catchment: WWE1001PI in the Town of Wareham



Roosevelt Street

2018 Massachusetts Integrated Listed Water

Discharge directly to Beaverdam Creek

MA95-53 Category 5 Estuary

Pollutants: Estuarine Bioassessments, Nitrogen (Total), Fecal Coliform

Pipe:

SNEP Project: Yes

Urbanized: Yes

Sewered: Yes

Inventory Date

No Flow Observations

Rating by Weather (0-5):

Wet :

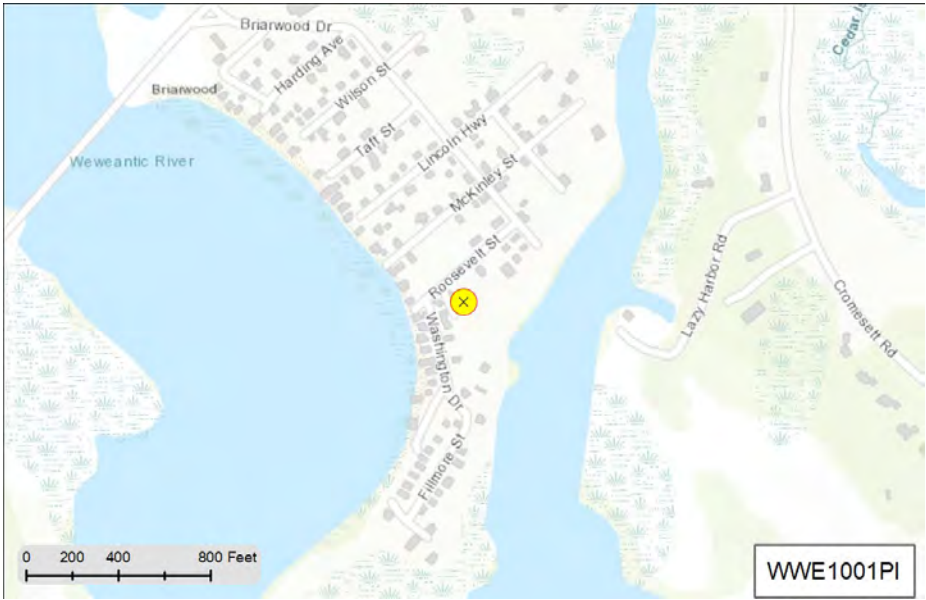
Dry :

Recommendation:

No fresh water samples. Recommend: continue with WW samples, collect samples from the road surface at WWE1702CB and WWE1005CB. Wewe R Impair: Bact and N.

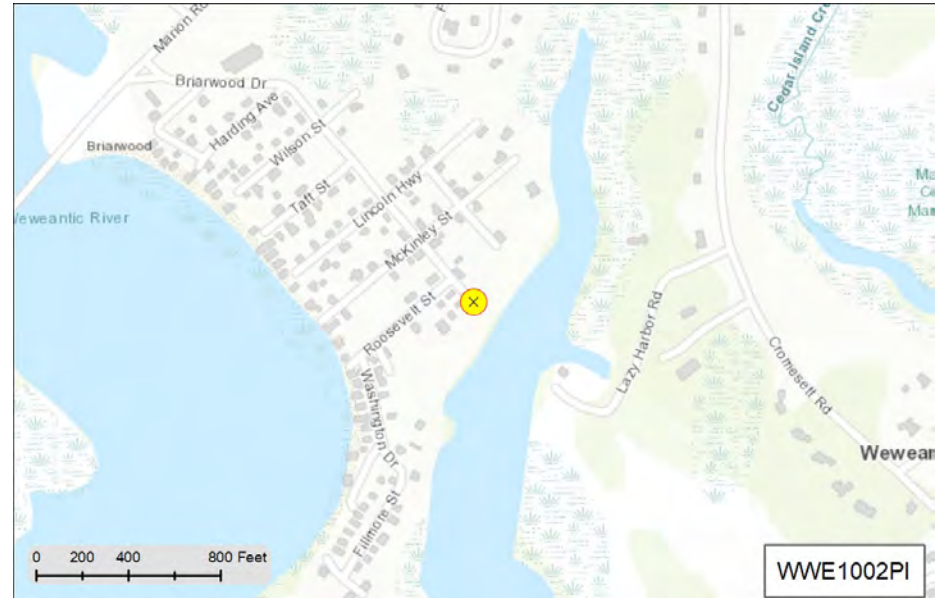
MS4 Ranking:

Status:



Status and Recommendation based on the opinion of the BBNEP.

Stormwater Report for Catchment: WWE1002PI in the Town of Wareham



end of Briarwood Drive

2018 Massachusetts Integrated Listed Water

Discharge directly to Beaverdam Creek

MA95-53 Category 5 Estuary

Pollutants: Estuarine Bioassessments, Nitrogen (Total), Fecal Coliform

Pipe:

SNEP Project: Yes

Urbanized: Yes

Sewered: Yes

Inventory Date

No Flow Observations

Rating by Weather (0-5):

Wet :

Dry :

Recommendation:

WW Rank (1 sample): Bact (2), Total 2. Recommend: Continue monitoring both DW and WW. During DW, monitor only if there is evidence of flow. If stagnant (not flowing), make a note on the data sheet. Continue WW sampling at WWE1001MH as the bacteria counts are significantly higher than DW. Investigate for potential ID. Wewe R Impair: Bact and N.



MS4 Ranking:

Status:

Status and Recommendation based on the opinion of the BBNEP.

Stormwater Report for Catchment: WWE1018PI in the Town of Wareham



Springhill Road

2018 Massachusetts Integrated Listed Water

Discharge directly to Beaverdam Creek

MA95-53 Category 5 Estuary

Pollutants: Estuarine Bioassessments, Nitrogen (Total), Fecal Coliform

Pipe:

SNEP Project: Yes

Urbanized: Yes

Sewered: Yes

Inventory Date

No Flow Observations

Rating by Weather (0-5):

Wet :

Dry :

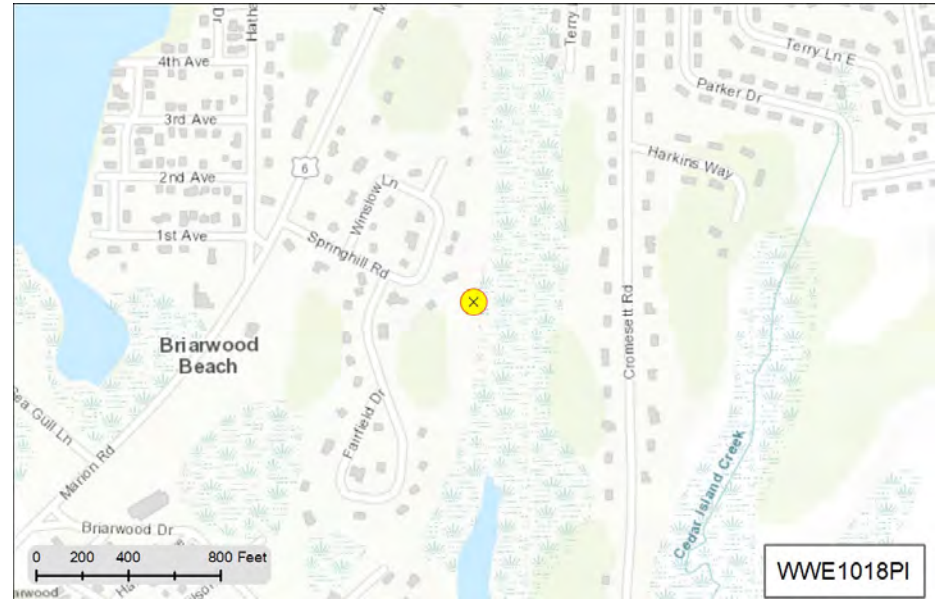


Recommendation:

DW: No flow, no issues. WW: no samples collected. Recommend: Collect samples in WW. Bvd Crk Impair: Bact and N.

MS4 Ranking:

Status:



Stormwater Report for Catchment: WWE1020PI in the Town of Wareham



Springhill Road

2018 Massachusetts Integrated Listed Water

Discharge directly to Beaverdam Creek

MA95-53 Category 5 Estuary

Pollutants: Estuarine Bioassessments, Nitrogen (Total), Fecal Coliform

Pipe:

SNEP Project:

Urbanized:

Sewered:

Inventory Date

No Flow Observations

Rating by Weather (0-5):

Wet :

Dry :

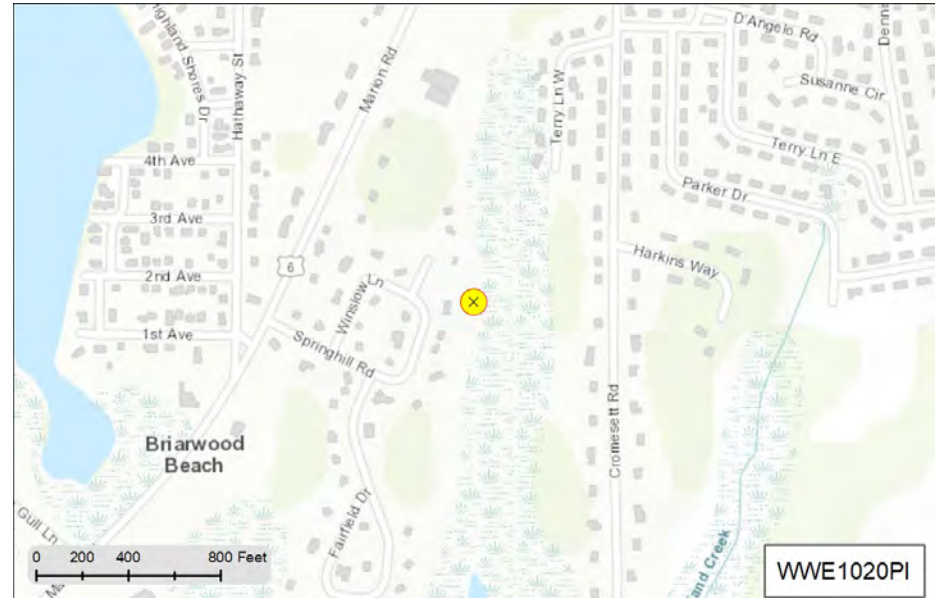


Recommendation:

DW: No flow, no issues. WW: no samples collected. Recommend: Collect samples in WW. Bvd Crk Impair: Bact and N.

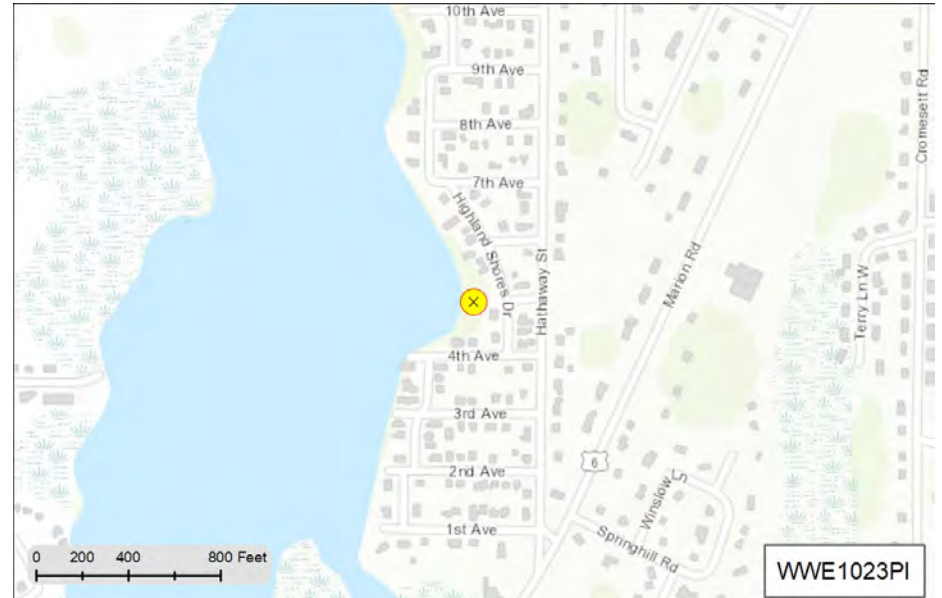
MS4 Ranking:

Status:



Status and Recommendation based on the opinion of the BBNEP.

Stormwater Report for Catchment: WWE1023PI in the Town of Wareham



end of Fifth Ave

2018 Massachusetts Integrated Listed Water

Discharge directly to Weweantic River

MA95-05 Category 5 Estuary

Pollutants: Estuarine Bioassessments, Nitrogen (Total), Enterococcus, Fecal Coliform

Pipe:

SNEP Project: Yes

Urbanized: Yes

Sewered: Yes

Inventory Date

No Flow Observations



Rating by Weather (0-5):

Wet :

Dry :

Recommendation:

DW: No flow, no issues. WW Rank (1 sample): Bact (1), Nitrates (1), Total 2. Recommend: Continue monitoring in WW. Wewe R Impair: Bact and N.



MS4 Ranking:

Status:

Status and Recommendation based on the opinion of the BBNEP.

Stormwater Report for Catchment: WWE1029PI in the Town of Wareham



Terry Lane West

2018 Massachusetts Integrated Listed Water

Discharge directly to Beaverdam Creek

MA95-53 Category 5 Estuary

Pollutants: Estuarine Bioassessments, Nitrogen (Total), Fecal Coliform

Pipe:

SNEP Project: Yes

Urbanized: Yes

Sewered: Yes

Inventory Date

No Flow Observations

Rating by Weather (0-5):

Wet :

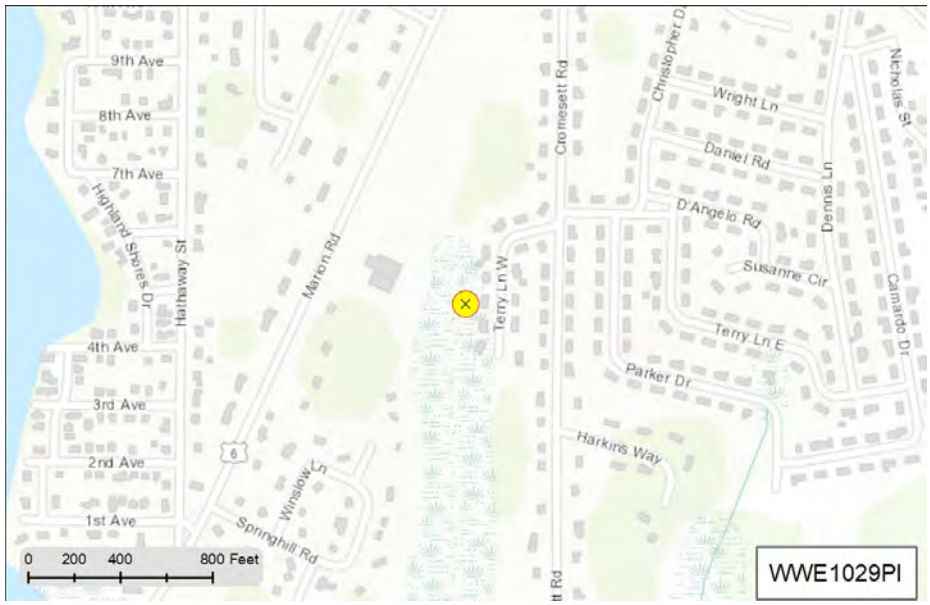
Dry :

Recommendation:

Recommend: Continue monitoring both DW and WW. During DW, monitor only if there is evidence of flow. If stagnant (not flowing), make a note on the data sheet. Wewe R Impair: Bact and N.

MS4 Ranking:

Status:



Status and Recommendation based on the opinion of the BBNEP.

Stormwater Report for Catchment: WWE1032PI in the Town of Wareham



Ninth Avenue

2018 Massachusetts Integrated Listed Water
 Discharge directly to Weweantic River
 MA95-05 Category 5 Estuary
 Pollutants: Estuarine Bioassessments, Nitrogen (Total), Enterococcus, Fecal Coliform

Pipe:

SNEP Project: Yes
 Urbanized: Yes
 Sewered: Yes

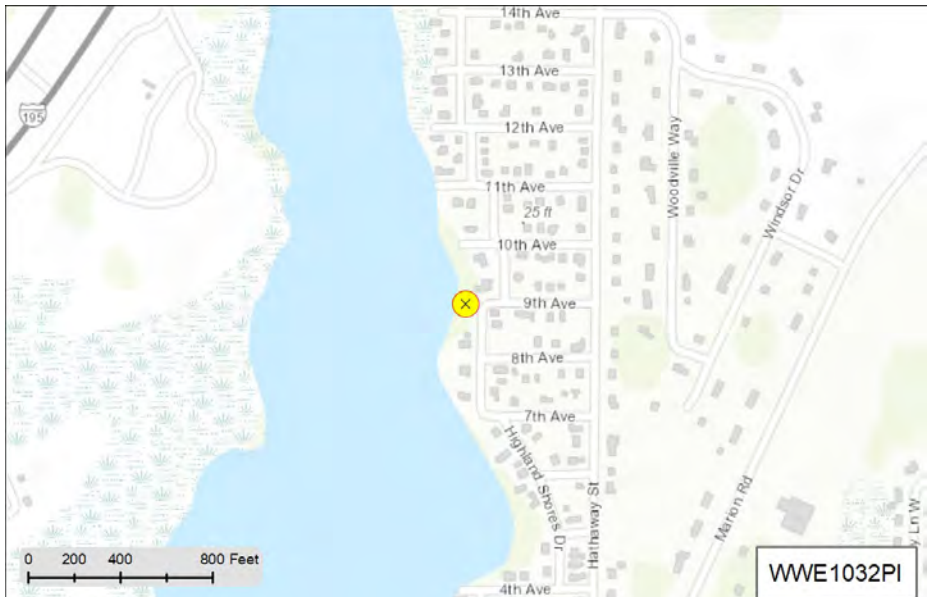
Inventory Date

No Flow Observations

Rating by Weather (0-5):
 Wet :
 Dry :

Recommendation:
 DW: No flow, no issues. WW: no samples collected. Recommend: Monitor in WW. Wewe R Impair: Bact and N.

MS4 Ranking:
 Status:



Status and Recommendation based on the opinion of the BBNEP.

Stormwater Report for Catchment: WWE1149PI in the Town of Wareham



Tenth Avenue

2018 Massachusetts Integrated Listed Water

Discharge directly to Weweantic River

MA95-05 Category 5 Estuary

Pollutants: Estuarine Bioassessments, Nitrogen (Total), Enterococcus, Fecal Coliform

Pipe:

SNEP Project: Yes

Urbanized: Yes

Sewered: Yes

Inventory Date

No Flow Observations

Rating by Weather (0-5):

Wet :

Dry :

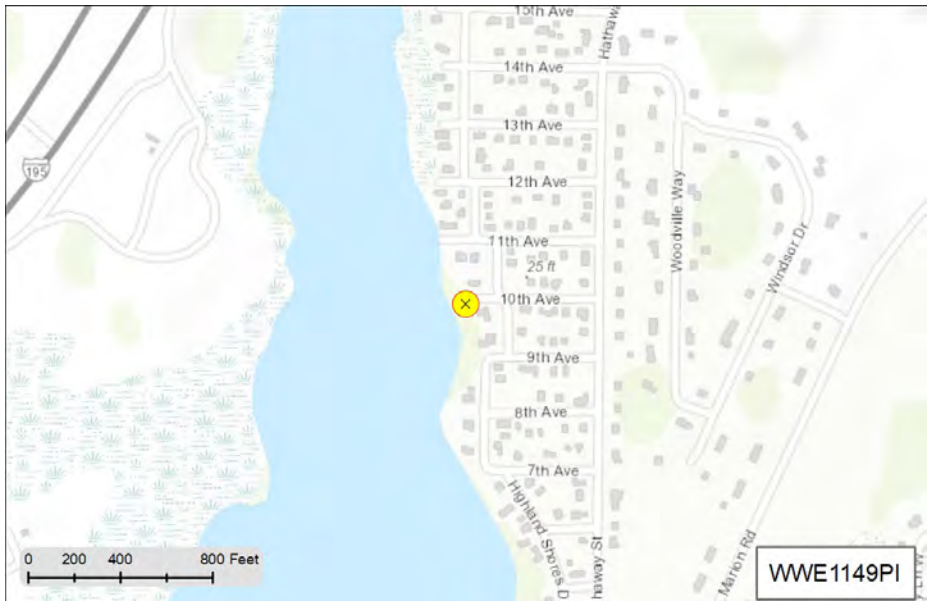


Recommendation:

DW: No flow, no issues. WW: no samples collected. Recommend: Monitor in WW. Wewe R Impair: Bact and N.

MS4 Ranking:

Status:



Status and Recommendation based on the opinion of the BBNEP.

Stormwater Report for Catchment: WWE1150PI in the Town of Wareham



end of First Ave

2018 Massachusetts Integrated Listed Water

Discharge directly to Weweantic River

MA95-05 Catagory 5 Estuary

Pollutants: Estuarine Bioassessments, Nitrogen (Total), Enterococcus, Fecal Coliform

Pipe:

SNEP Project: Yes

Urbanized: Yes

Sewered: Yes

Inventory Date

No Flow Observations

Rating by Weather (0-5):

Wet :

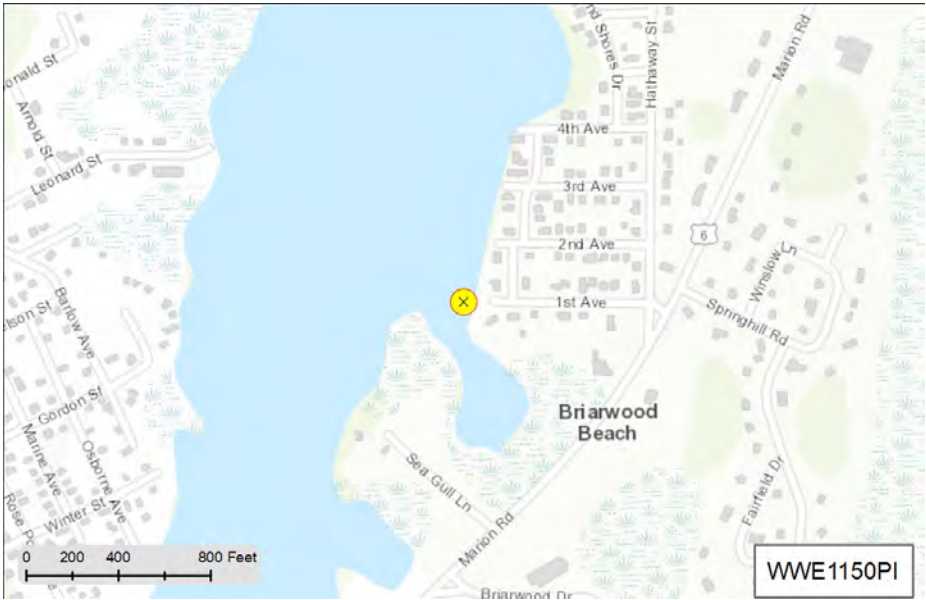
Dry :

Recommnedation:

DW: No flow, no issues. WW: 1 sample collected. WW Rank (1 sample): Bact (2), Total 2. Recommend: Continue monitoring in WW. Wewe R Impair: Bact and N.

MS4 Ranking:

Status:



Status and Recommendation based on the opinion of the BBNEP.

Stormwater Report for Catchment: WWE1151PI in the Town of Wareham



end of Second Ave

2018 Massachusetts Integrated Listed Water
 Discharge directly to Weweantic River
 MA95-05 Category 5 Estuary
 Pollutants: Estuarine Bioassessments, Nitrogen (Total),
 Enterococcus, Fecal Coliform

Pipe:

SNEP Project: Yes
 Urbanized: Yes
 Sewered: Yes

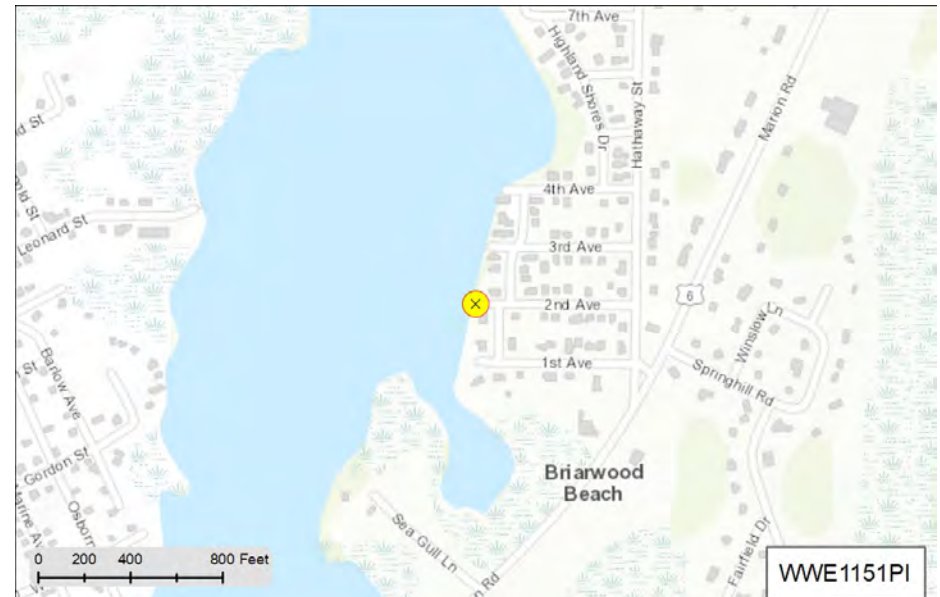
Inventory Date

No Flow Observations

Rating by Weather (0-5):
 Wet :
 Dry :

Recommendation:
 DW: No flow, no issues. WW: 1 sample collected. WW Rank (1 sample): Bact (2), Total 2. Recommend: Continue monitoring in WW. Wewe R Impair: Bact and N.

MS4 Ranking:
 Status:



Status and Recommendation based on the opinion of the BBNEP.

Stormwater Report for Catchment: WWE1152PI in the Town of Wareham



Highland Shores Dr between 14th and 15th Avenues

2018 Massachusetts Integrated Listed Water

Discharge directly to Weweantic River

MA95-05 Category 5 Estuary

Pollutants: Estuarine Bioassessments, Nitrogen (Total), Enterococcus, Fecal Coliform

Pipe:

SNEP Project: Yes

Urbanized: Yes

Sewered: Yes

Inventory Date

No Flow Observations

Rating by Weather (0-5):

Wet :

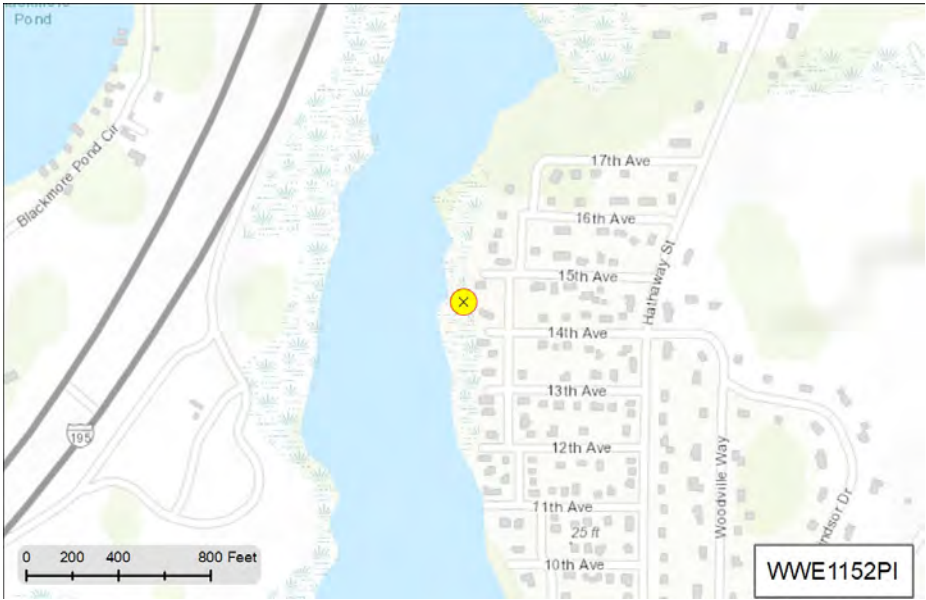
Dry :

Recommendation:

DW: No flow, no issues. WW: no samples collected. Recommend monitoring in WW. Wewe R Impair: Bact and N.

MS4 Ranking:

Status:



Status and Recommendation based on the opinion of the BBNEP.

Stormwater Report for Catchment: WWE1153PI in the Town of Wareham



end of Seventeenth Ave

2018 Massachusetts Integrated Listed Water

Discharge directly to Weweantic River

MA95-05 Category 5 Estuary

Pollutants: Estuarine Bioassessments, Nitrogen (Total), Enterococcus, Fecal Coliform

Pipe:

SNEP Project: Yes

Urbanized: Yes

Sewered: Yes

Inventory Date

No Flow Observations

Rating by Weather (0-5):

Wet :

Dry :



Recommendation:

DW: No flow, no issues. WW: Recommend: Monitor for WW, if discharge is brackish or tidally blocked, monitor road surface at both WWE1224CB and WWE1224CB. Wewe R Impair: Bact and N.

MS4 Ranking:

Status:

Status and Recommendation based on the opinion of the BBNEP.

